



Office of the Chicago City  
Clerk



O2011-10029

Office of the City Clerk

City Council Document Tracking Sheet

<b>Meeting Date:</b>	12/14/2011
<b>Sponsor(s):</b>	Reilly, Brendan (42)
<b>Type:</b>	Ordinance
<b>Title:</b>	Awning(s) for Pei Wei Asian Diner
<b>Committee(s) Assignment:</b>	Committee on Transportation and Public Way

ORDINANCE  
PEI WEI ASIAN DINER  
Acct. No. 352886 - 2  
Permit No. 1098515

*Be It Ordained by the City Council of the City of Chicago:*

SECTION 1. Permission and authority are hereby given and granted to PEI WEI ASIAN DINER, upon the terms and subject to the conditions of this ordinance to construct, install, maintain and use one (1) Awning(s) projecting over the public right-of-way adjacent to its premises known as 227 E. Ontario St..

Said Awning(s) at E. Ontario measure(s):

One (1) at fifteen point six seven (15.67) feet in length, and three point seven five (3.75) feet in width for a total of fifty-eight point seven six (58.76) square feet.

The location of said privilege shall be as shown on prints kept on file with the Department of Business Affairs and Consumer Protection and the Office of the City Clerk.

Said privilege shall be constructed in accordance with plans and specifications approved by the Zoning Department - Signs.

*This grant of privilege in the public way shall be subject to the provisions of Section 10-28-015 and all other required provisions of the Municipal Code of Chicago.*

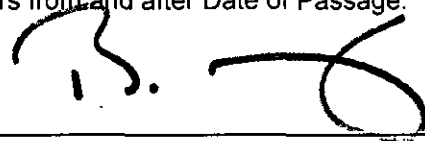
The grantee shall pay to the City of Chicago as compensation for the privilege #1098515 herein granted the sum of fifty (\$50.00) per annum in advance.

A 25% penalty will be added for payments received after due date.

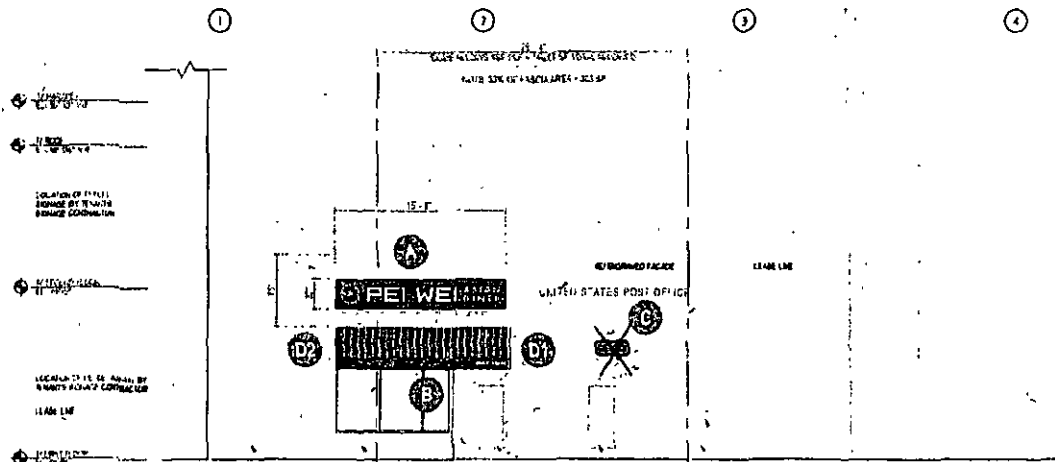
The permit holder agrees to hold the City of Chicago harmless for any damage, relocation or replacement costs associated with damage, relocation or removal of private property caused by the City performing work in the public way.

Authority herein given and granted for a period of five (5) years from and after Date of Passage.

Alderman \_\_\_\_\_



Brendan Reilly 42nd Ward



STOREFRONT ELEVATION  
SCALE: 1/8" = 1'-0"

<b>PEI WEI</b>	
277 CANTON ST.	
CHICAGO, IL	
OWNER	PEI WEI STORE
DESIGNED BY	PEI WEI STORE
DRAWN BY	PEI WEI STORE
CHECKED BY	PEI WEI STORE
DATE	10/10/11
CHANDLER SIGNS	
1000 N. WINDY BLDG. SUITE 100	
CHICAGO, IL 60642	
TEL: 773.545.8888	
FAX: 773.545.8889	
WWW.CHANDLERSIGNS.COM	

<b>Chandler Signs</b>	
www.chandler-signs.com	
1000 N. Windy Bldg. Suite 100	Chicago, IL 60642
773.545.8888	Fax: 773.545.8889
1300 Park Center Dr. Suite 100	
Chicago, IL 60642	
773.545.8888	
FAX: 773.545.8889	
WWW.CHANDLER-SIGNS.COM	

FINAL ELECTRICAL CONNECTION BY CUSTOMER