



City of Chicago



O2010-7241

Office of the City Clerk

Tracking Sheet

Meeting Date:	12/8/2010
Status:	Introduced
Sponsor(s):	Fioretti, Bob
Type:	Ordinance
Title:	Canopy(s) for Sobie Development
Committee(s) Assignment:	Committee on Transportation and Public Way

ORDINANCE
SOBIE DEVELOPMENT
Acct. No. 300283 - 1
Permit No. 1048428

Be It Ordained by the City Council of the City of Chicago:

SECTION 1. Permission and authority are hereby given and granted to SOBIE DEVELOPMENT, upon the terms and subject to the conditions of this ordinance to construct, install, maintain and use two (2) Canopy(s) over the public right-of-way adjacent to its premises known as 1330 S. Michigan Ave..

Said Canopy(s) at S. MICHIGAN measure(s):

One (1) at nineteen point six (19.6) feet in length, and three (3) feet in width for a total of fifty-eight point eight (58.8) square feet.

Said Canopy(s) at S. MICHIGAN measure(s):

One (1) at one hundred forty-eight point one (148.1) feet in length, and four (4) feet in width for a total of five hundred ninety-two point four (592.4) square feet.

The location of said privilege shall be as shown on prints kept on file with the Department of Business Affairs and Consumer Protection and the Office of the City Clerk

Said privilege shall be constructed in accordance with plans and specifications approved by the Zoning Department - Signs.

This grant of privilege in the public way shall be subject to the provisions of Section 10-28-015 and all other required provisions of the Municipal Code of Chicago.

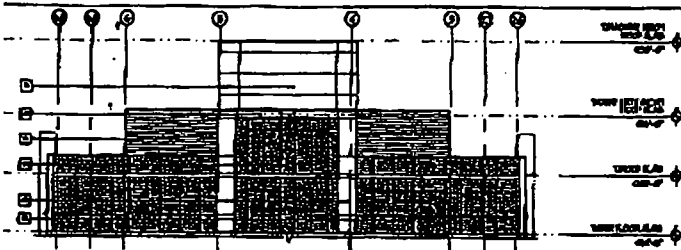
The grantee shall pay to the City of Chicago as compensation for the privilege #1048428 herein granted the sum of two hundred twenty-three dollars and ten cents (\$223.10) per annum in advance.

A 25% penalty will be added for payments received after due date.

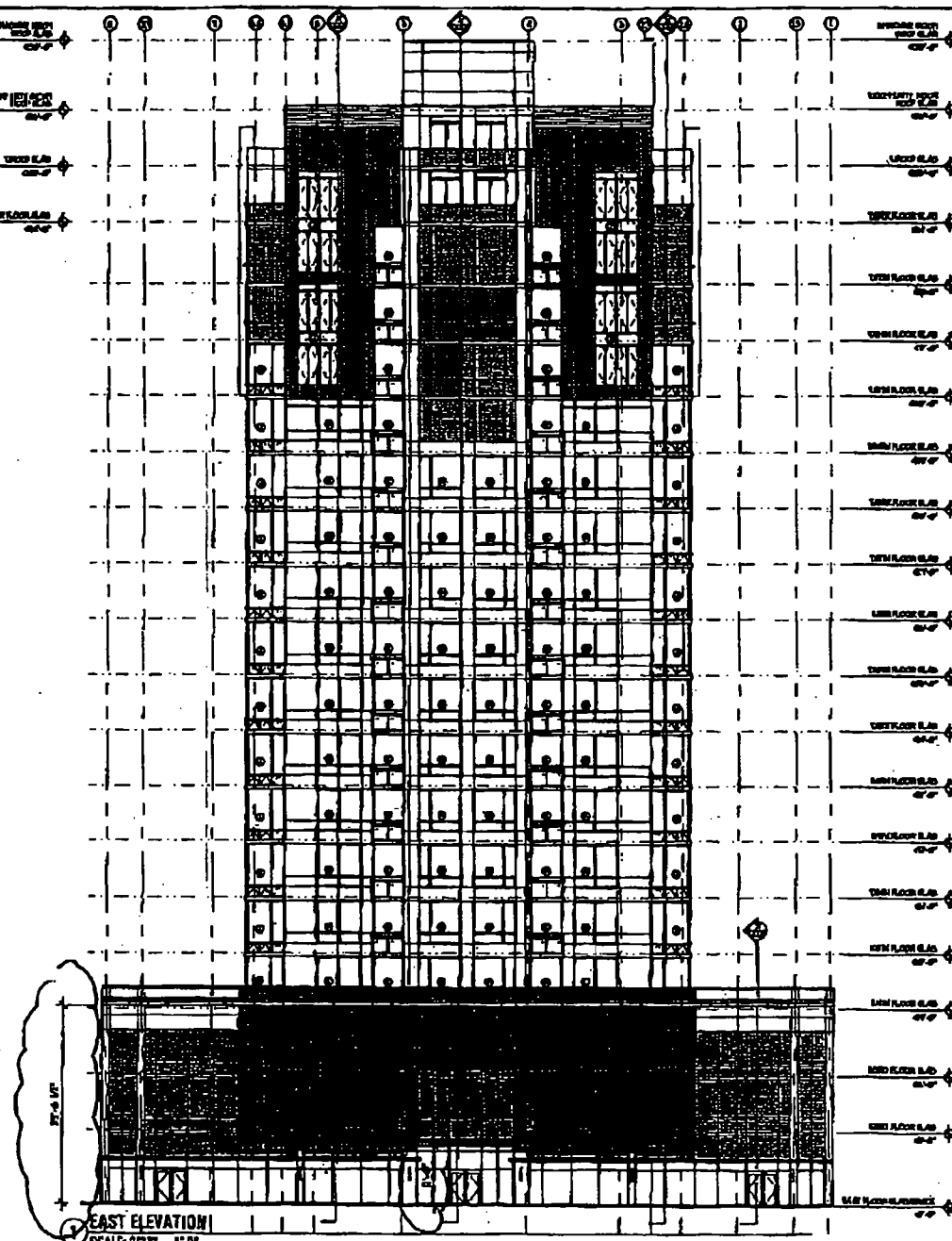
Authority herein given and granted for a period of five (5) years from and after Date of Passage.

Alderman


Bob Fioretti 2nd Ward



EAST ELEVATION - PENTHOUSE
SCALE: 3/32" = 1'-0"



EAST ELEVATION
SCALE: 3/32" = 1'-0"

MATERIAL LEGEND:

1	CONCRETE
2	GLASS
3	STEEL
4	ALUMINUM
5	BRICK
6	WOOD
7	ROOFING
8	LANDSCAPE
9	PAINT
10	FINISH
11	MECHANICAL
12	ELECTRICAL
13	PLUMBING
14	HEATING
15	Cooling
16	Lighting
17	Acoustics
18	Fire Protection
19	Security
20	Accessibility
21	Environmental
22	Historic Preservation
23	Archaeology
24	Geology
25	Seismicity
26	Wind
27	Earthquake
28	Soil
29	Water
30	Air
31	Noise
32	Visual Quality
33	Scenic Resources
34	Cultural Resources
35	Historic Resources
36	Archaeological Resources
37	Geological Resources
38	Seismic Resources
39	Wind Resources
40	Earthquake Resources
41	Soil Resources
42	Water Resources
43	Air Resources
44	Noise Resources
45	Visual Quality Resources
46	Scenic Resources
47	Cultural Resources
48	Historic Resources
49	Archaeological Resources
50	Geological Resources
51	Seismic Resources
52	Wind Resources
53	Earthquake Resources
54	Soil Resources
55	Water Resources
56	Air Resources
57	Noise Resources
58	Visual Quality Resources
59	Scenic Resources
60	Cultural Resources
61	Historic Resources
62	Archaeological Resources
63	Geological Resources
64	Seismic Resources
65	Wind Resources
66	Earthquake Resources
67	Soil Resources
68	Water Resources
69	Air Resources
70	Noise Resources
71	Visual Quality Resources
72	Scenic Resources
73	Cultural Resources
74	Historic Resources
75	Archaeological Resources
76	Geological Resources
77	Seismic Resources
78	Wind Resources
79	Earthquake Resources
80	Soil Resources
81	Water Resources
82	Air Resources
83	Noise Resources
84	Visual Quality Resources
85	Scenic Resources
86	Cultural Resources
87	Historic Resources
88	Archaeological Resources
89	Geological Resources
90	Seismic Resources
91	Wind Resources
92	Earthquake Resources
93	Soil Resources
94	Water Resources
95	Air Resources
96	Noise Resources
97	Visual Quality Resources
98	Scenic Resources
99	Cultural Resources
100	Historic Resources

THESE DRAWINGS ARE PREPARED BY THE ARCHITECT FOR THE PURPOSE OF OBTAINING PERMITS AND FOR THE INFORMATION OF THE PUBLIC. THEY ARE NOT TO BE USED FOR ANY OTHER PURPOSE WITHOUT THE WRITTEN CONSENT OF THE ARCHITECT. THE ARCHITECT ASSUMES NO LIABILITY FOR ANY DAMAGE OR INJURY TO PERSONS OR PROPERTY CAUSED BY THE USE OF THESE DRAWINGS.

1330
SOUTH MICHIGAN AVE
CHICAGO, ILLINOIS
SOBE DEVELOPMENT

DATE	REVISION
11.15.00	PRELIMINARY
07.15.01	REVISIONS TO PERMITS
08.15.01	REVISIONS TO PERMITS
09.15.01	REVISIONS TO PERMITS
10.15.01	REVISIONS TO PERMITS
11.15.01	REVISIONS TO PERMITS
12.15.01	REVISIONS TO PERMITS
01.15.02	REVISIONS TO PERMITS
02.15.02	REVISIONS TO PERMITS
03.15.02	REVISIONS TO PERMITS
04.15.02	REVISIONS TO PERMITS
05.15.02	REVISIONS TO PERMITS
06.15.02	REVISIONS TO PERMITS
07.15.02	REVISIONS TO PERMITS
08.15.02	REVISIONS TO PERMITS
09.15.02	REVISIONS TO PERMITS
10.15.02	REVISIONS TO PERMITS
11.15.02	REVISIONS TO PERMITS
12.15.02	REVISIONS TO PERMITS
01.15.03	REVISIONS TO PERMITS
02.15.03	REVISIONS TO PERMITS
03.15.03	REVISIONS TO PERMITS
04.15.03	REVISIONS TO PERMITS
05.15.03	REVISIONS TO PERMITS
06.15.03	REVISIONS TO PERMITS
07.15.03	REVISIONS TO PERMITS
08.15.03	REVISIONS TO PERMITS
09.15.03	REVISIONS TO PERMITS
10.15.03	REVISIONS TO PERMITS
11.15.03	REVISIONS TO PERMITS
12.15.03	REVISIONS TO PERMITS
01.15.04	REVISIONS TO PERMITS
02.15.04	REVISIONS TO PERMITS
03.15.04	REVISIONS TO PERMITS
04.15.04	REVISIONS TO PERMITS
05.15.04	REVISIONS TO PERMITS
06.15.04	REVISIONS TO PERMITS
07.15.04	REVISIONS TO PERMITS
08.15.04	REVISIONS TO PERMITS
09.15.04	REVISIONS TO PERMITS
10.15.04	REVISIONS TO PERMITS
11.15.04	REVISIONS TO PERMITS
12.15.04	REVISIONS TO PERMITS
01.15.05	REVISIONS TO PERMITS
02.15.05	REVISIONS TO PERMITS
03.15.05	REVISIONS TO PERMITS
04.15.05	REVISIONS TO PERMITS
05.15.05	REVISIONS TO PERMITS
06.15.05	REVISIONS TO PERMITS
07.15.05	REVISIONS TO PERMITS
08.15.05	REVISIONS TO PERMITS
09.15.05	REVISIONS TO PERMITS
10.15.05	REVISIONS TO PERMITS
11.15.05	REVISIONS TO PERMITS
12.15.05	REVISIONS TO PERMITS
01.15.06	REVISIONS TO PERMITS
02.15.06	REVISIONS TO PERMITS
03.15.06	REVISIONS TO PERMITS
04.15.06	REVISIONS TO PERMITS
05.15.06	REVISIONS TO PERMITS
06.15.06	REVISIONS TO PERMITS
07.15.06	REVISIONS TO PERMITS
08.15.06	REVISIONS TO PERMITS
09.15.06	REVISIONS TO PERMITS
10.15.06	REVISIONS TO PERMITS
11.15.06	REVISIONS TO PERMITS
12.15.06	REVISIONS TO PERMITS
01.15.07	REVISIONS TO PERMITS
02.15.07	REVISIONS TO PERMITS
03.15.07	REVISIONS TO PERMITS
04.15.07	REVISIONS TO PERMITS
05.15.07	REVISIONS TO PERMITS
06.15.07	REVISIONS TO PERMITS
07.15.07	REVISIONS TO PERMITS
08.15.07	REVISIONS TO PERMITS
09.15.07	REVISIONS TO PERMITS
10.15.07	REVISIONS TO PERMITS
11.15.07	REVISIONS TO PERMITS
12.15.07	REVISIONS TO PERMITS
01.15.08	REVISIONS TO PERMITS
02.15.08	REVISIONS TO PERMITS
03.15.08	REVISIONS TO PERMITS
04.15.08	REVISIONS TO PERMITS
05.15.08	REVISIONS TO PERMITS
06.15.08	REVISIONS TO PERMITS
07.15.08	REVISIONS TO PERMITS
08.15.08	REVISIONS TO PERMITS
09.15.08	REVISIONS TO PERMITS
10.15.08	REVISIONS TO PERMITS
11.15.08	REVISIONS TO PERMITS
12.15.08	REVISIONS TO PERMITS
01.15.09	REVISIONS TO PERMITS
02.15.09	REVISIONS TO PERMITS
03.15.09	REVISIONS TO PERMITS
04.15.09	REVISIONS TO PERMITS
05.15.09	REVISIONS TO PERMITS
06.15.09	REVISIONS TO PERMITS
07.15.09	REVISIONS TO PERMITS
08.15.09	REVISIONS TO PERMITS
09.15.09	REVISIONS TO PERMITS
10.15.09	REVISIONS TO PERMITS
11.15.09	REVISIONS TO PERMITS
12.15.09	REVISIONS TO PERMITS
01.15.10	REVISIONS TO PERMITS
02.15.10	REVISIONS TO PERMITS
03.15.10	REVISIONS TO PERMITS
04.15.10	REVISIONS TO PERMITS
05.15.10	REVISIONS TO PERMITS
06.15.10	REVISIONS TO PERMITS
07.15.10	REVISIONS TO PERMITS
08.15.10	REVISIONS TO PERMITS
09.15.10	REVISIONS TO PERMITS
10.15.10	REVISIONS TO PERMITS
11.15.10	REVISIONS TO PERMITS
12.15.10	REVISIONS TO PERMITS
01.15.11	REVISIONS TO PERMITS
02.15.11	REVISIONS TO PERMITS
03.15.11	REVISIONS TO PERMITS
04.15.11	REVISIONS TO PERMITS
05.15.11	REVISIONS TO PERMITS
06.15.11	REVISIONS TO PERMITS
07.15.11	REVISIONS TO PERMITS
08.15.11	REVISIONS TO PERMITS
09.15.11	REVISIONS TO PERMITS
10.15.11	REVISIONS TO PERMITS
11.15.11	REVISIONS TO PERMITS
12.15.11	REVISIONS TO PERMITS
01.15.12	REVISIONS TO PERMITS
02.15.12	REVISIONS TO PERMITS
03.15.12	REVISIONS TO PERMITS
04.15.12	REVISIONS TO PERMITS
05.15.12	REVISIONS TO PERMITS
06.15.12	REVISIONS TO PERMITS
07.15.12	REVISIONS TO PERMITS
08.15.12	REVISIONS TO PERMITS
09.15.12	REVISIONS TO PERMITS
10.15.12	REVISIONS TO PERMITS
11.15.12	REVISIONS TO PERMITS
12.15.12	REVISIONS TO PERMITS
01.15.13	REVISIONS TO PERMITS
02.15.13	REVISIONS TO PERMITS
03.15.13	REVISIONS TO PERMITS
04.15.13	REVISIONS TO PERMITS
05.15.13	REVISIONS TO PERMITS
06.15.13	REVISIONS TO PERMITS
07.15.13	REVISIONS TO PERMITS
08.15.13	REVISIONS TO PERMITS
09.15.13	REVISIONS TO PERMITS
10.15.13	REVISIONS TO PERMITS
11.15.13	REVISIONS TO PERMITS
12.15.13	REVISIONS TO PERMITS
01.15.14	REVISIONS TO PERMITS
02.15.14	REVISIONS TO PERMITS
03.15.14	REVISIONS TO PERMITS
04.15.14	REVISIONS TO PERMITS
05.15.14	REVISIONS TO PERMITS
06.15.14	REVISIONS TO PERMITS
07.15.14	REVISIONS TO PERMITS
08.15.14	REVISIONS TO PERMITS
09.15.14	REVISIONS TO PERMITS
10.15.14	REVISIONS TO PERMITS
11.15.14	REVISIONS TO PERMITS
12.15.14	REVISIONS TO PERMITS
01.15.15	REVISIONS TO PERMITS
02.15.15	REVISIONS TO PERMITS
03.15.15	REVISIONS TO PERMITS
04.15.15	REVISIONS TO PERMITS
05.15.15	REVISIONS TO PERMITS
06.15.15	REVISIONS TO PERMITS
07.15.15	REVISIONS TO PERMITS
08.15.15	REVISIONS TO PERMITS
09.15.15	REVISIONS TO PERMITS
10.15.15	REVISIONS TO PERMITS
11.15.15	REVISIONS TO PERMITS
12.15.15	REVISIONS TO PERMITS
01.15.16	REVISIONS TO PERMITS
02.15.16	REVISIONS TO PERMITS
03.15.16	REVISIONS TO PERMITS
04.15.16	REVISIONS TO PERMITS
05.15.16	REVISIONS TO PERMITS
06.15.16	REVISIONS TO PERMITS
07.15.16	REVISIONS TO PERMITS
08.15.16	REVISIONS TO PERMITS
09.15.16	REVISIONS TO PERMITS
10.15.16	REVISIONS TO PERMITS
11.15.16	REVISIONS TO PERMITS
12.15.16	REVISIONS TO PERMITS
01.15.17	REVISIONS TO PERMITS
02.15.17	REVISIONS TO PERMITS
03.15.17	REVISIONS TO PERMITS
04.15.17	REVISIONS TO PERMITS
05.15.17	REVISIONS TO PERMITS
06.15.17	REVISIONS TO PERMITS
07.15.17	REVISIONS TO PERMITS
08.15.17	REVISIONS TO PERMITS
09.15.17	REVISIONS TO PERMITS
10.15.17	REVISIONS TO PERMITS
11.15.17	REVISIONS TO PERMITS
12.15.17	REVISIONS TO PERMITS
01.15.18	REVISIONS TO PERMITS
02.15.18	REVISIONS TO PERMITS
03.15.18	REVISIONS TO PERMITS
04.15.18	REVISIONS TO PERMITS
05.15.18	REVISIONS TO PERMITS
06.15.18	REVISIONS TO PERMITS
07.15.18	REVISIONS TO PERMITS
08.15.18	REVISIONS TO PERMITS
09.15.18	REVISIONS TO PERMITS
10.15.18	REVISIONS TO PERMITS
11.15.18	REVISIONS TO PERMITS
12.15.18	REVISIONS TO PERMITS
01.15.19	REVISIONS TO PERMITS
02.15.19	REVISIONS TO PERMITS
03.15.19	REVISIONS TO PERMITS
04.15.19	REVISIONS TO PERMITS
05.15.19	REVISIONS TO PERMITS
06.15.19	REVISIONS TO PERMITS
07.15.19	REVISIONS TO PERMITS
08.15.19	REVISIONS TO PERMITS
09.15.19	REVISIONS TO PERMITS
10.15.19	REVISIONS TO PERMITS
11.15.19	REVISIONS TO PERMITS
12.15.19	REVISIONS TO PERMITS
01.15.20	REVISIONS TO PERMITS
02.15.20	REVISIONS TO PERMITS
03.15.20	REVISIONS TO PERMITS
04.15.20	REVISIONS TO PERMITS
05.15.20	REVISIONS TO PERMITS
06.15.20	REVISIONS TO PERMITS
07.15.20	REVISIONS TO PERMITS
08.15.20	REVISIONS TO PERMITS
09.15.20	REVISIONS TO PERMITS
10.15.20	REVISIONS TO PERMITS
11.15.20	REVISIONS TO PERMITS
12.15.20	REVISIONS TO PERMITS

XXX & YYY
ARCHITECTS
P.C.
1111 N. MICHIGAN AVE
CHICAGO, IL 60611
www.xxxandyyy.com

hatchman + pender
architects

EAST ELEVATION

A2.0