



Office of the Chicago City  
Clerk



O2011-5608

Office of the City Clerk

City Council Document Tracking Sheet

<b>Meeting Date:</b>	<b>7/6/2011</b>
<b>Sponsor(s):</b>	<b>Dowell, Pat (3)</b>
<b>Type:</b>	<b>Ordinance</b>
<b>Title:</b>	<b>Traffic Closure on portion of E 49th St</b>
<b>Committee(s) Assignment:</b>	<b>Committee on Transportation and Public Way</b>

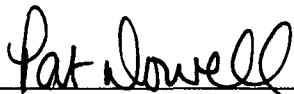
## CLOSING TO VEHICULAR TRAFFIC ORDINANCE

BE IT ORDAINED BY THE CITY COUNCIL OF THE CITY OF CHICAGO:

SECTION 1. That the Chicago Department of Transportation Maps and Plats examiner of subdivisions, is hereby authorized and directed to approve a proposed closure to vehicular traffic of E. 49<sup>th</sup> Street between s. State Street and S. Wabash Avenue (File No. 10-03-11-3227).

SECTION 2. This ordinance shall take effect and be in force from and after its passage.

Legal Description Approved:

  
\_\_\_\_\_  
Honorable Pat Dowell  
Alderman, 3<sup>rd</sup> Ward

# PLAT OF CLOSURE

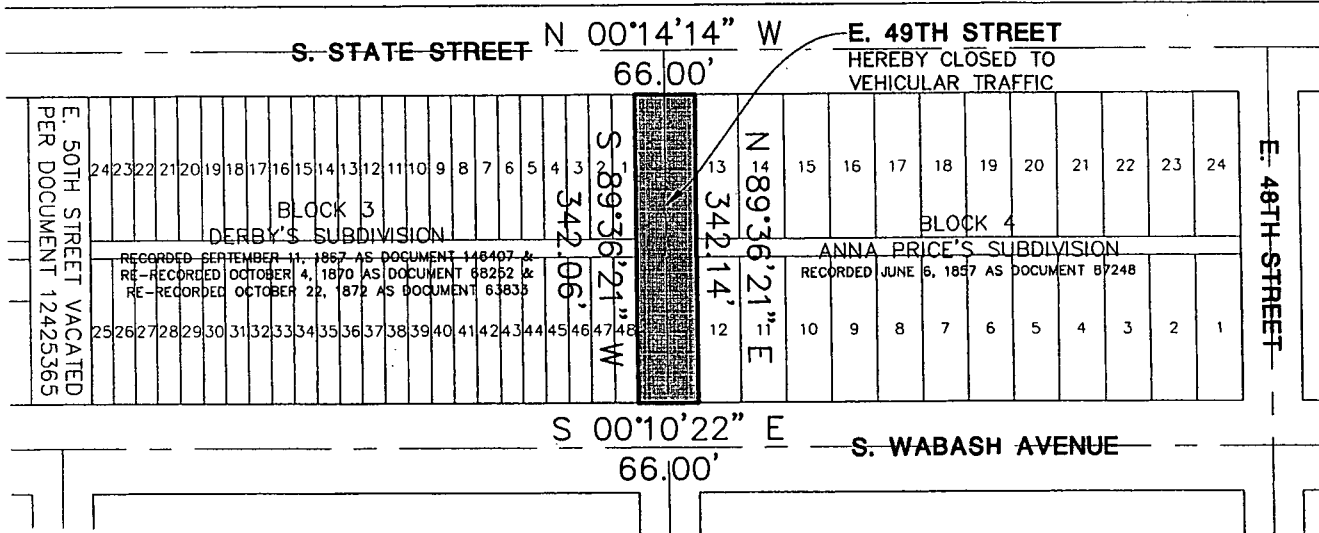
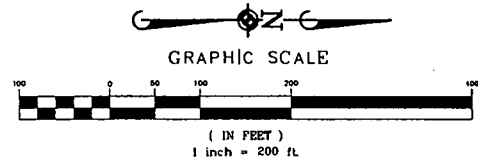
## OF PART OF 49TH STREET

THE NORTH HALF OF 49TH STREET LYING EAST OF STATE STREET AND LYING WEST OF WABASH AVENUE AND LYING SOUTH OF BLOCK 4 IN ANNA PRICE'S SUBDIVISION OF THE NORTHWEST QUARTER OF THE NORTHWEST QUARTER OF SECTION 10, TOWNSHIP 38 NORTH, RANGE 14 EAST OF THE THIRD PRINCIPAL MERIDIAN, ACCORDING TO THE PLAT THEREOF RECORDED JUNE 6, 1857 AS DOCUMENT 87248, IN COOK COUNTY, ILLINOIS.

TOGETHER WITH:

THE SOUTH HALF OF 49TH STREET LYING EAST OF STATE STREET AND LYING WEST OF WABASH AVENUE AND LYING NORTH OF BLOCK 3 IN WILLIAM M. DERBY'S SUBDIVISION OF THE SOUTHWEST QUARTER OF THE NORTHWEST QUARTER OF SECTION 10, TOWNSHIP 38 NORTH, RANGE 14 EAST OF THE THIRD PRINCIPAL MERIDIAN, ACCORDING TO THE PLAT THEREOF RECORDED SEPTEMBER 11, 1867 AS DOCUMENT 146407 AND RE-RECORDED OCTOBER 4, 1870 AS DOCUMENT 68252 AND RE-RECORDED OCTOBER 22, 1872 AS DOCUMENT 63833, IN COOK COUNTY ILLINOIS.

AREA OF CLOSURE: 22579 SQ. FT (0.518 ACRES ±)



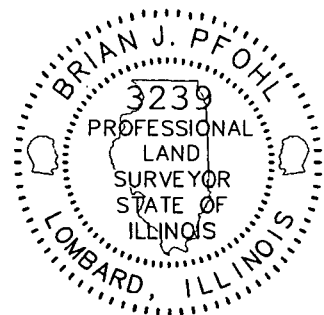
STATE OF ILLINOIS )  
COUNTY OF DuPAGE ) SS

I, BRIAN J. PFOHL, A PROFESSIONAL LAND SURVEYOR DO HEREBY CERTIFY THAT I HAVE PREPARED THE PLAT HEREON DRAWN FROM PREVIOUS PLATS AND RECORDS FOR THE PURPOSE OF CLOSING A PUBLIC STREET AS SHOWN ON THE PLAT HEREON DRAWN. DIMENSIONS SHOWN IN FEET AND DECIMAL PARTS THEREOF.

DATED THIS 6<sup>th</sup> DAY OF June, 2011.

*Brian J. Pfohl*  
ILLINOIS PROFESSIONAL LAND SURVEYOR NO. 035-003239  
LICENSE EXPIRES NOVEMBER 30, 2012

DESIGN FIRM PROFESSIONAL LICENSE NO. 184003350  
LICENSE EXPIRES APRIL 30, 2013



DWG: 10-03-11-3227  
© 2010 MANHARD CONSULTING, LTD. ALL RIGHTS RESERVED



700 Springer Drive, Lombard, IL 60148 ph:830.891.8500 fx:830.891.8555 manhard.com  
Civil Engineers • Surveyors • Water Resource Engineers • Water & Wastewater Engineers  
Construction Managers • Environmental Scientists • Landscape Architects • Planners

DuSABLE HIGH SCHOOL		
CITY OF CHICAGO, ILLINOIS		
PLAT OF CLOSURE		
DRAWN BY: <u>BJP</u>	PROJ. MGR.: <u>SDR</u>	SHEET <u>1</u> OF <u>1</u>
DATE: <u>01/28/11</u>	SCALE: <u>1" = 200'</u>	CPSCH 070319

Dwg Name: P:\CPSCH\dwg\Surv\Final Drawings\Exhibits Surv\CPSCH-SE.dwg Updated By: BPfohl 09:22