



Office of the Chicago City
Clerk



O2011-8829

Office of the City Clerk

City Council Document Tracking Sheet

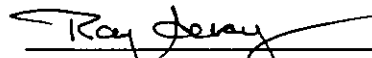
Meeting Date:	11/2/2011
Sponsor(s):	Suarez, Regner Ray (31) Reboyas, Ariel (30)
Type:	Ordinance
Title:	Traffic closure on portion of N Kildare Ave
Committee(s) Assignment:	Committee on Transportation and Public Way

CLOSING TO VEHICULAR TRAFFIC ORDINANCE


BE IT ORDAINED BY THE CITY COUNCIL OF THE CITY OF CHICAGO:

SECTION 1. That the Commissioner of Transportation is hereby authorized and directed to approve a proposed closure to vehicular traffic of all that part of North Kildare Avenue lying north to the north line of West Wabansia Avenue and lying south of the westerly extension of the north line of Lot 2 in Block 19 in Garfield, a Subdivision in the southeast quarter of Section 34, Township 40, Range 13 East of the Third Principal Meridian (File No. 34-30/31-11-3249)

SECTION 2. This ordinance shall take effect and be in force from and after its passage.



Honorable Ray Suarez
Alderman, 31st Ward

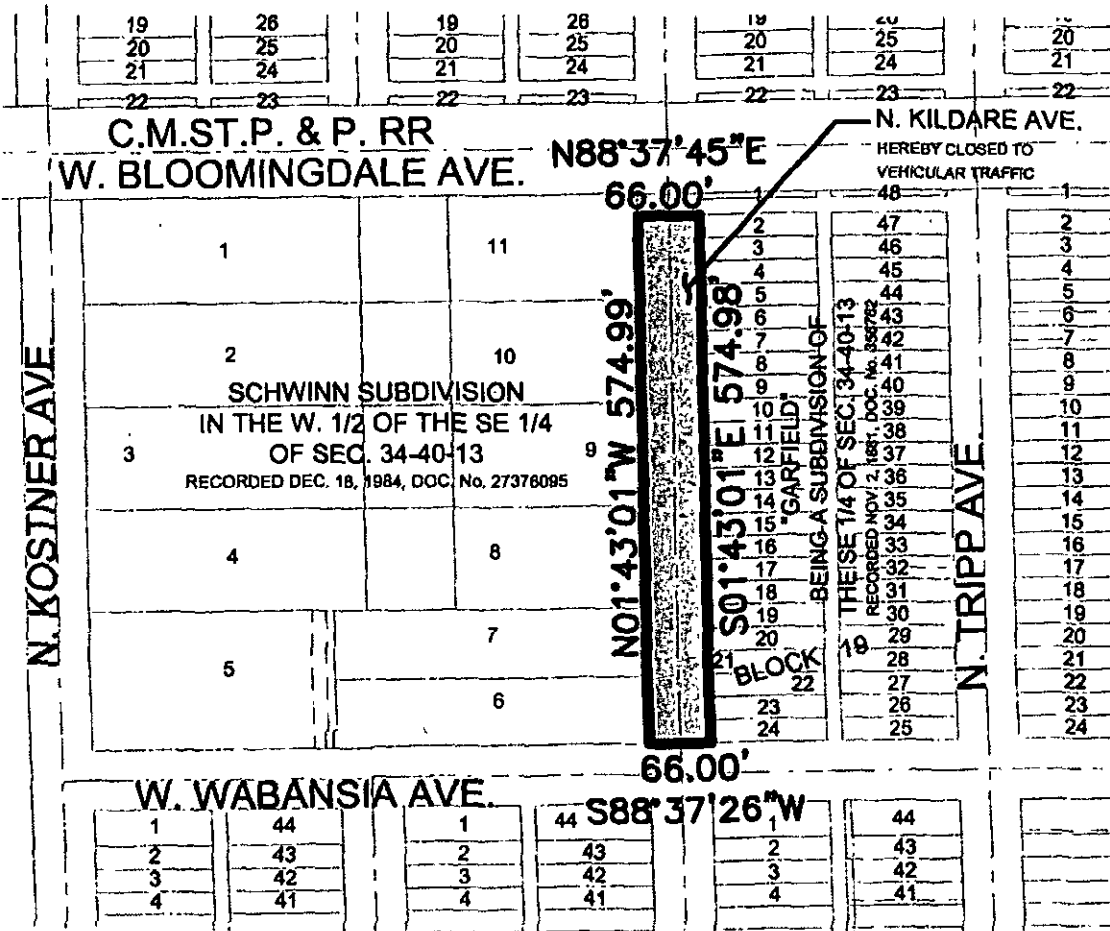


Honorable Ariel E. Reboyras
Alderman, 30th Ward

PLAT OF CLOSURE

OF PART OF N KILDARE AVE.

THAT PART OF NORTH KILDARE AVENUE LYING NORTH OF THE NORTH LINE OF WEST WABANSIA AVENUE AND LYING SOUTH OF THE WESTERLY EXTENSION OF THE NORTH LINE OF LOT 2 IN BLOCK 19 IN GARFIELD, A SUBDIVISION IN THE SOUTHEAST QUARTER OF SECTION 34, TOWNSHIP 40 NORTH, RANGE 13 EAST OF THE THIRD PRINCIPAL MERIDIAN, ALL IN COOK COUNTY, ILLINOIS.



STATE OF ILLINOIS)
COUNTY OF COOK) S.S.

WE, ENVIRONMENTAL DESIGN INTERNATIONAL, Inc., ILLINOIS PROFESSIONAL DESIGN FIRM LICENSE NO. 184-001224, DO HEREBY CERTIFY THAT THE PLAT SHOWN HEREON WAS PREPARED FROM EXISTING PLATS AND RECORDS FOR THE PURPOSE OF CLOSING A PUBLIC STREET AND THAT SAID PLAT IS A TRUE AND CORRECT REPRESENTATION THEREOF. ALL DIMENSIONS SHOWN IN FEET AND DECIMAL PART THEREOF.

GIVEN UNDER MY HAND AND SEAL IN CHICAGO, ILLINOIS, THIS 2nd DAY OF AUGUST A.D., 2011

MICHAEL T. RING, P.L.S. #3244
LICENSE EXPIRES 11/30/2012



Environmental Design International Inc.
Civil, Survey, Environmental and Construction Inspection Services
33 W. MONROE STREET, SUITE 1825, CHICAGO, IL 60603
Ph. (312) 345-1400 Fax (312) 345-0529
www.envdesigni.com
Excellence. Dedication. Innovation

GREENBAUM PARK
CITY OF CHICAGO, IL
PLAT OF CLOSURE

DRAWN BY: MDT
DATE: 08/02/2011

PROJ. MGR: MTR
SCALE: 1"=200'

SHEET 1 OF 1
JOB No. 0802011