



Office of the City Clerk



O2013-3025

Office of the City Clerk

City Council Document Tracking Sheet

Meeting Date:	4/10/2013
Sponsor(s):	Reilly, Brendan (42)
Type:	Ordinance
Title:	Grant(s) of privilege in public way for Intercontinental Hotel Chicago
Committee(s) Assignment:	Committee on Transportation and Public Way

ORDINANCE
INTERCONTINENTAL HOTEL CHICAGO
Acct. No. 322399 - 1
Permit No. 1103715

Be It Ordained by the City Council of the City of Chicago:

SECTION 1. Permission and authority are hereby given and granted to INTERCONTINENTAL HOTEL CHICAGO, upon the terms and subject to the conditions of this ordinance to maintain and use, as now constructed, one (1) Loading Dock(s) on the public right-of-way adjacent to its premises known as 505 N. Michigan Ave..

Said Loading Dock(s) at N. Michigan measure(s):

One (1) at ninety (90) feet in length, and ten (10) feet in width for a total of nine hundred (900) square feet.

The location of said privilege shall be as shown on prints kept on file with the Department of Business Affairs and Consumer Protection and the Office of the City Clerk.

Said privilege shall be constructed in accordance with plans and specifications approved by the Department of Transportation (Division of Project Development).

This grant of privilege in the public way shall be subject to the provisions of Section 10-28-015 and all other required provisions of the Municipal Code of Chicago.

The grantee shall pay to the City of Chicago as compensation for the privilege #1103715 herein granted the sum of eight thousand nine hundred eighty-six (\$8,986.00) per annum in advance.

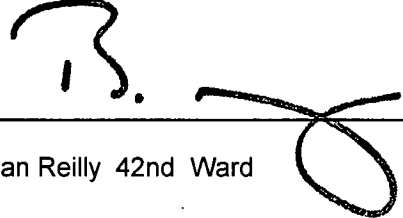
A 25% penalty will be added for payments received after due date.

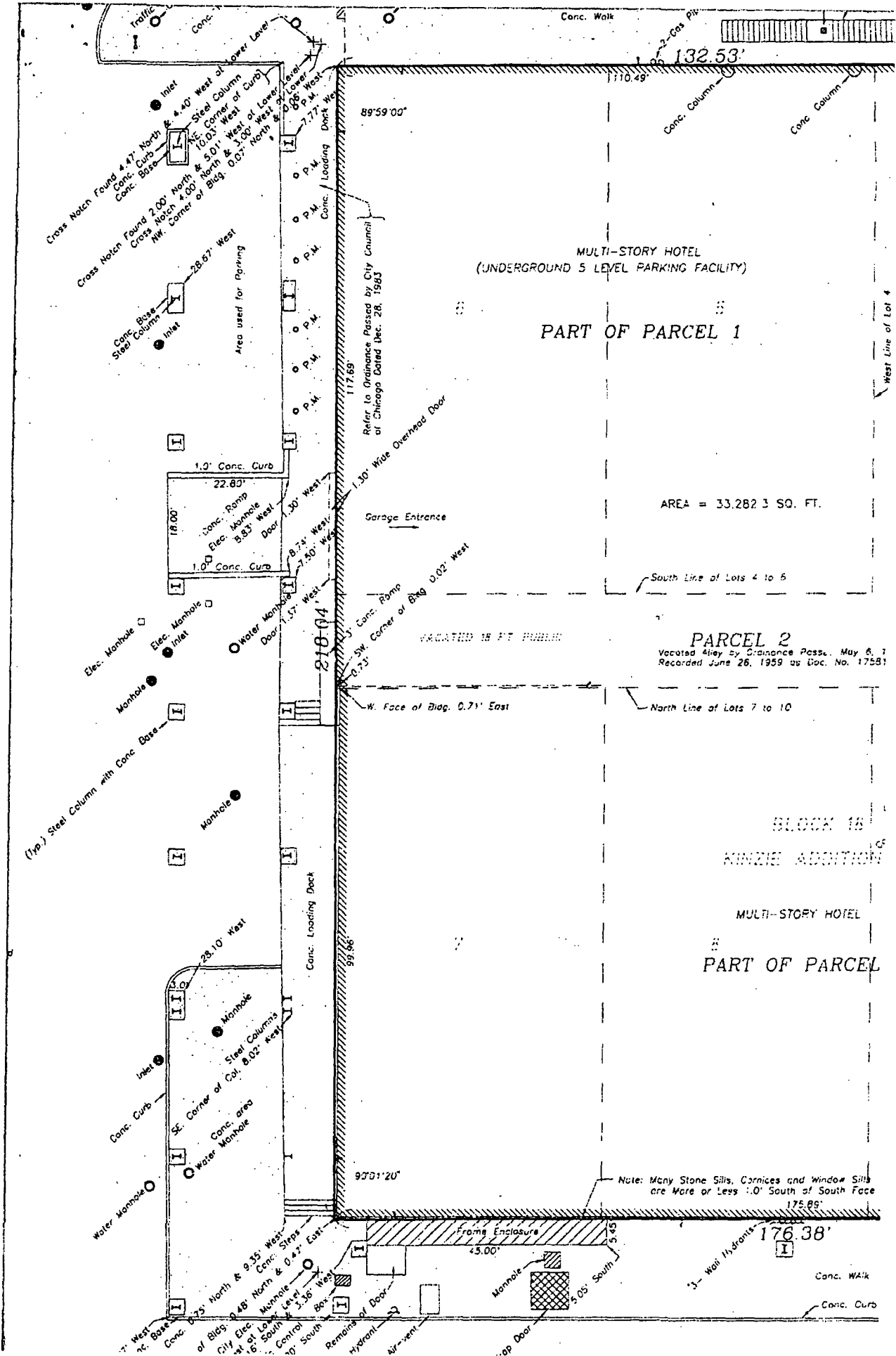
The permit holder agrees to hold the City of Chicago harmless for any damage, relocation or replacement costs associated with damage, relocation or removal of private property caused by the City performing work in the public way.

Authority herein given and granted for a period of five (5) years from and after 11/13/2012.

Alderman _____

Brendan Reilly 42nd Ward

A handwritten signature in black ink, appearing to be 'B. Reilly', written over a horizontal line. The signature is stylized and includes a large loop at the end.



MULTI-STORY HOTEL
(UNDERGROUND 5 LEVEL PARKING FACILITY)

PART OF PARCEL 1

AREA = 33,282.3 SQ. FT.

VACATED 18 FT PUBLIC

PARCEL 2

Vacated Alley by Ordinance Passed, May 6, 1959
Recorded June 26, 1959 as Doc. No. 17581

BLOCK 18

KINZIE ADDITION

MULTI-STORY HOTEL

PART OF PARCEL 2

Note: Many Stone Sills, Cornices and Window Sills
are More or Less .10' South of South Face

176.38'

Conc. Walk

Conc. Curb

West Line of Lot 4

South Line of Lots 4 to 6

North Line of Lots 7 to 10

W. Face of Diag. 0.71' East

SW. Corner of Bldg 0.02' West

Refer to Ordinance Passed by City Council
of Chicago Dated Dec. 28, 1903

Garage Entrance

1.30' Wide Overhead Door

117.69'

89°59'00"

132.53'

110.49'

2'-Cns. Pk.

Conc. Column

Conc. Column

Conc. Loading Deck

99.66'

97°31'20"

Frame Enclosure

±5.00'

Manhole

3'-Wall Hydrants

10'-0" Door

Remaind of Door

Hydrant

Air-vent.

1.36' West

Central Box

10' South

16' South

City Elec. Manhole

of Bldg. 0.48' North & 9.35' West

Conc. Steps

0.47' East

SE. Corner of Col. 8.02' West

Steel Columns

Manhole

3.0'

28.10' West

Water Manhole

Conc. area

Water Manhole

Conc. Curb

Inlet

(Typ.) Steel Column with Conc. Base

Manhole

Manhole

Manhole

Manhole

Manhole

Manhole

Manhole

Manhole

Water Manhole

Water Manhole

Water Manhole

Water Manhole

Water Manhole

Water Manhole

Water Manhole

Water Manhole

Water Manhole

Water Manhole

Water Manhole

Water Manhole

Water Manhole

Water Manhole

Water Manhole

Water Manhole

Water Manhole

Water Manhole

Water Manhole

Water Manhole

Water Manhole

Water Manhole

Water Manhole

Water Manhole

Water Manhole

Water Manhole

Water Manhole

Water Manhole

Water Manhole

Water Manhole

Water Manhole

Water Manhole

Water Manhole

Water Manhole

Water Manhole

Water Manhole

Water Manhole

Water Manhole

Water Manhole

Water Manhole

Water Manhole

Water Manhole

Water Manhole

Water Manhole

Water Manhole

Water Manhole

Water Manhole

Water Manhole

Water Manhole