



# City of Chicago



Or2014-277

Office of the City Clerk

## Document Tracking Sheet

<b>Meeting Date:</b>	6/23/2014
<b>Sponsor(s):</b>	Maldonado (26)
<b>Type:</b>	Order
<b>Title:</b>	Issuance of permits for sign(s)/signboard(s) at 4052 W Grand Ave
<b>Committee(s) Assignment:</b>	Committee on Zoning, Landmarks and Building Standards

Committee on Zoning, Landmarks, and Building Standards

ORDERED, That the Commissioner of Buildings is hereby directed to issue a sign permit to:

Midwest Sign & Lighting, Inc.  
4910 W. WILSHIRE BOULEVARD  
COUNTRY CLUB HILLS, IL 60451

For the erection of sign / signboard over 24 feet in height and / or over 100 square feet (in area of one face) at:

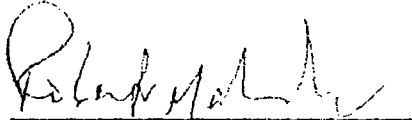
SALVATION ARMY  
4052 W. GRAND AVENUE  
CHICAGO, IL 60651

Dimensions: Length 22'-6" Height 29'-1"

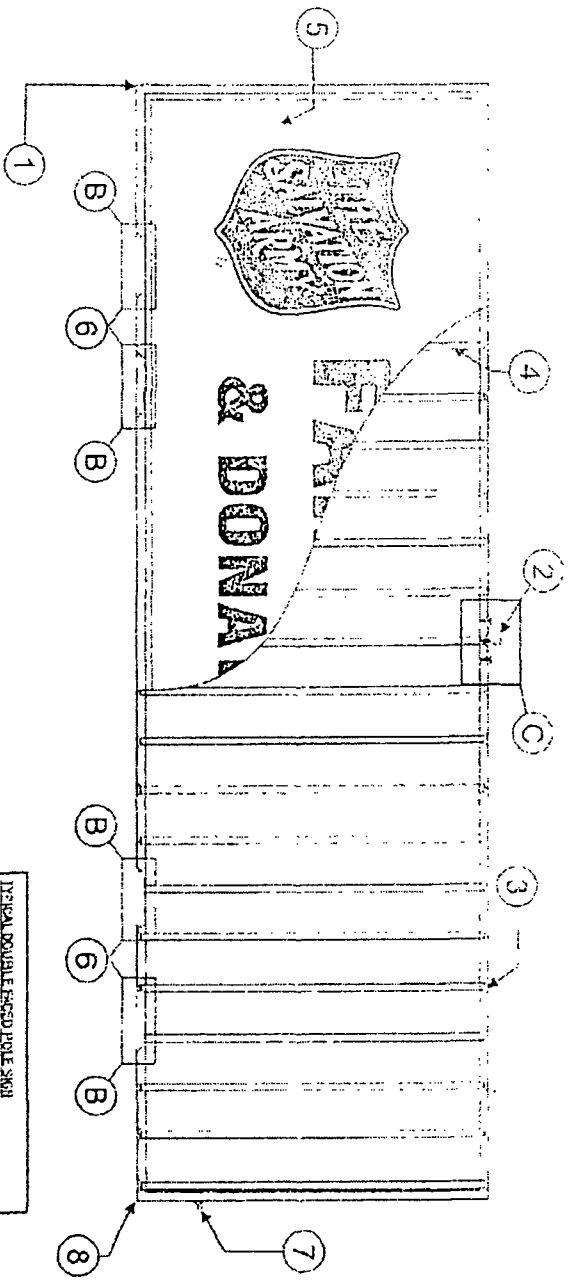
Height above grade / roof to top of sign 29' to top of pylon sign

TOTAL SQUARE FOOT AREA 92 SQUARE FEET FOR SIGN ONLY

Such Sign (s) shall comply with all applicable provisions of Title 17 of the Chicago Zoning Ordinance and all other Applicable provisions of the Municipal Code of the City of Chicago Governing the construction and maintenance of outdoor signs, sign boards and structures.

  
Alderman Approval





(2) F84 T12 CHO LAMPS  
(4) E8B B4B-46 BALLASTS  
14 AMP'S

SALVATION ARMY  
4052 WEST GRAND AVE  
CHICAGO, IL  
ORDER#:

TYPICAL DOUBLE THROD POLE SIGN  
UL 48 AND I.E.C. 600 COMPLIANT  
(NOT TO SCALE)  
1. EXTENDED ALUMINUM SIGN CABINET WITH  
WELDED CORNER SEAMS  
2. LIFTING POINT (REMOVED AFTER  
INSTALLATION AND REPLACED WITH  
HEX BOLT)  
3. RECESSED HIGH OUTPUT DEAD FRONT  
LAMP SOCKETS  
4. COOL WHITE HIGH OUTPUT LAMPS  
5. PORTABLE SIGN FACE  
6. LISTED SIGN BALLAST (SEE ALSO DETAIL A)  
7. 20 AMP SERVICE DISCONNECT SWITCH  
8. MANUFACTURER'S LABEL AND U.L. LISTING

ALL INFORMATION CONTAINED ON THE DRAWINGS IS THE PROPERTY OF THE DRAWING FIRM AND IS NOT TO BE REPRODUCED OR TRANSMITTED IN ANY FORM OR BY ANY MEANS, ELECTRONIC OR MECHANICAL, WITHOUT WRITTEN PERMISSION FROM THE DRAWING FIRM.

THIS SIGN SHALL REMAIN THE PROPERTY OF  
ADAMS SIGNS UNTIL FULLY PAID FOR.

ACCEPTED BY: \_\_\_\_\_ DATE: \_\_\_\_\_



ADAMS ELECTRIC SIGNS  
CHICAGO, IL

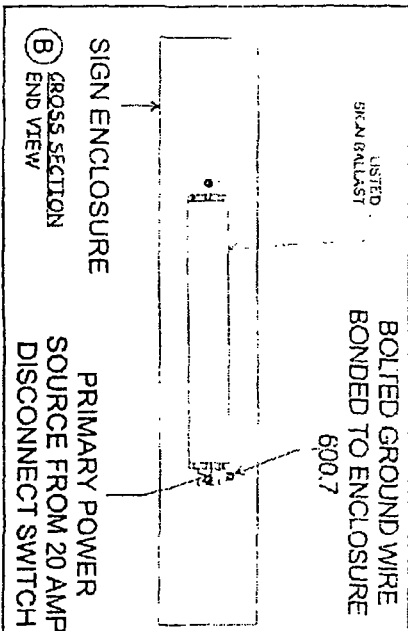
SCALE: 3/8" = 1'-0"  
SALES: DARRYL  
DWG.#: 0713014

ART: RS  
CKD: \_\_\_\_\_

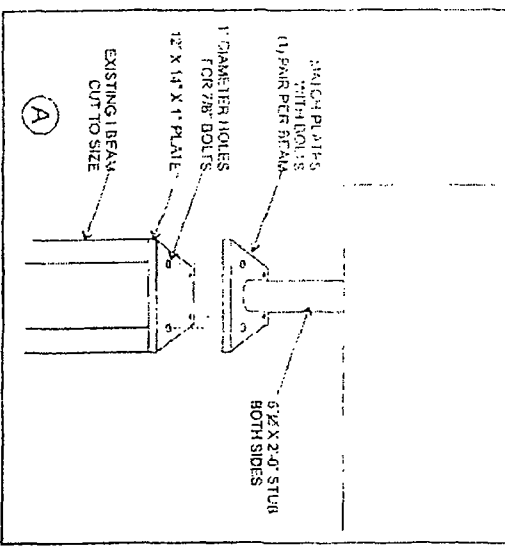
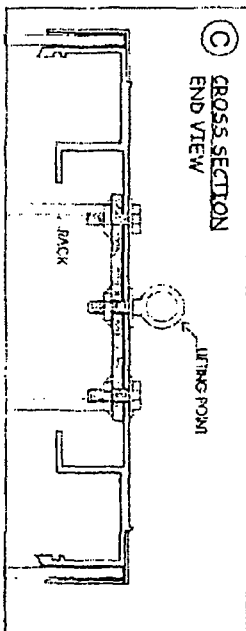
AS BUILT: CABINET TRIM SIZE:

FACE TRIM SIZE:

TYPICAL BALLAST INSTALLATION  
WITH MECHANICALLY BONDED GROUNDING.



TYPICAL EXTRUSION



SALVATION ARMY  
4052 WEST GRAND AVE  
CHICAGO, IL  
ORDER#:

1. LIFTING POINT FOR REMOVAL OF SIGN FROM WALL AND PROTECTIVE IT IS THE SOLE PROPERTY OF ADAMS SIGNS AND IS NOT TO BE REPRODUCED BY ANYONE WITHOUT WRITTEN PERMISSION FROM ADAMS SIGNS

THIS SIGN SHALL REMAIN THE PROPERTY OF ADAMS SIGNS UNTIL FULLY PAID FOR

ACCEPTED BY: \_\_\_\_\_ DATE: \_\_\_\_\_

**ADAMS ELECTRIC SIGNS**  
CHICAGO, IL

SCALE: NTS  
SALES: DARRYL  
DWG. #: 0713014

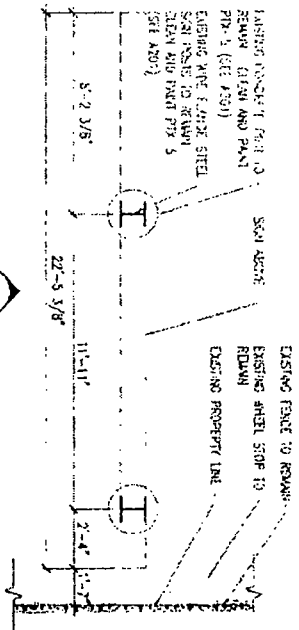
DATE: 8-14-13 / 10-15-13 / 10-23-13  
ART: RS  
CKD:

AS BUILT: CABINET TRIM SIZE:

FACE TRIM SIZE:



# EXTERIOR PYLON SIGN - PLAN



SALVATION ARMY  
4052 WEST GRAND AVE  
CHICAGO, IL

ORDER#:

ALL INFORMATION CONTAINED ON THIS DRAWING IS CONFIDENTIAL AND PROPRIETARY IT IS THE SOLE PROPERTY OF ADAMS SIGNS AND IS NOT TO BE REPRODUCED BY ANYONE WITHOUT WRITTEN CONSENT FROM ADAMS SIGNS.

THIS SIGN SHALL REMAIN THE PROPERTY OF ADAMS SIGNS UNTIL FULLY PAID FOR.

ACCEPTED BY: \_\_\_\_\_ DATE: \_\_\_\_\_



**ADAMS ELECTRIC SIGNS**  
CHICAGO, IL

AS BUILT: CABINET TRIM SIZE:

FACE TRIM SIZE:

SCALE: 3/16" = 1'-0"  
SALES: DARRYL  
DWG.#: 0713014

DATE: 7-12-13  
ART: RS  
CND: