



# City of Chicago



O2014-9007

Office of the City Clerk

## Document Tracking Sheet

<b>Meeting Date:</b>	11/5/2014
<b>Sponsor(s):</b>	Harris (8)
<b>Type:</b>	Ordinance
<b>Title:</b>	Awning(s) for Essential Elements Chicago Ltd.
<b>Committee(s) Assignment:</b>	Committee on Transportation and Public Way

ORDINANCE  
ESSENTIAL ELEMENTS CHICAGO, LTD.  
Acct. No. 324444 - 1  
Permit No. 1115575

*Be It Ordained by the City Council of the City of Chicago:*

SECTION 1. Permission and authority are hereby given and granted to ESSENTIAL ELEMENTS CHICAGO, LTD., upon the terms and subject to the conditions of this ordinance to construct, install, maintain and use one (1) Awning(s) projecting over the public right-of-way adjacent to its premises known as 1640 E. 87th St..

Said Awning(s) at E. 87th Street measure(s):

One (1) at twenty-four (24) feet in length, and one point nine one (1.91) foot in width for a total of forty-five point eight four (45.84) square feet.

The location of said privilege shall be as shown on prints kept on file with the Department of Business Affairs and Consumer Protection and the Office of the City Clerk.

Said privilege shall be constructed in accordance with plans and specifications approved by the Zoning Department - Signs.

This grant of privilege in the public way shall be subject to the provisions of Section 10-28-015 and all other required provisions of the Municipal Code of Chicago.

The grantee shall pay to the City of Chicago as compensation for the privilege #1115575 herein granted the sum of fifty (\$50.00) per annum in advance.

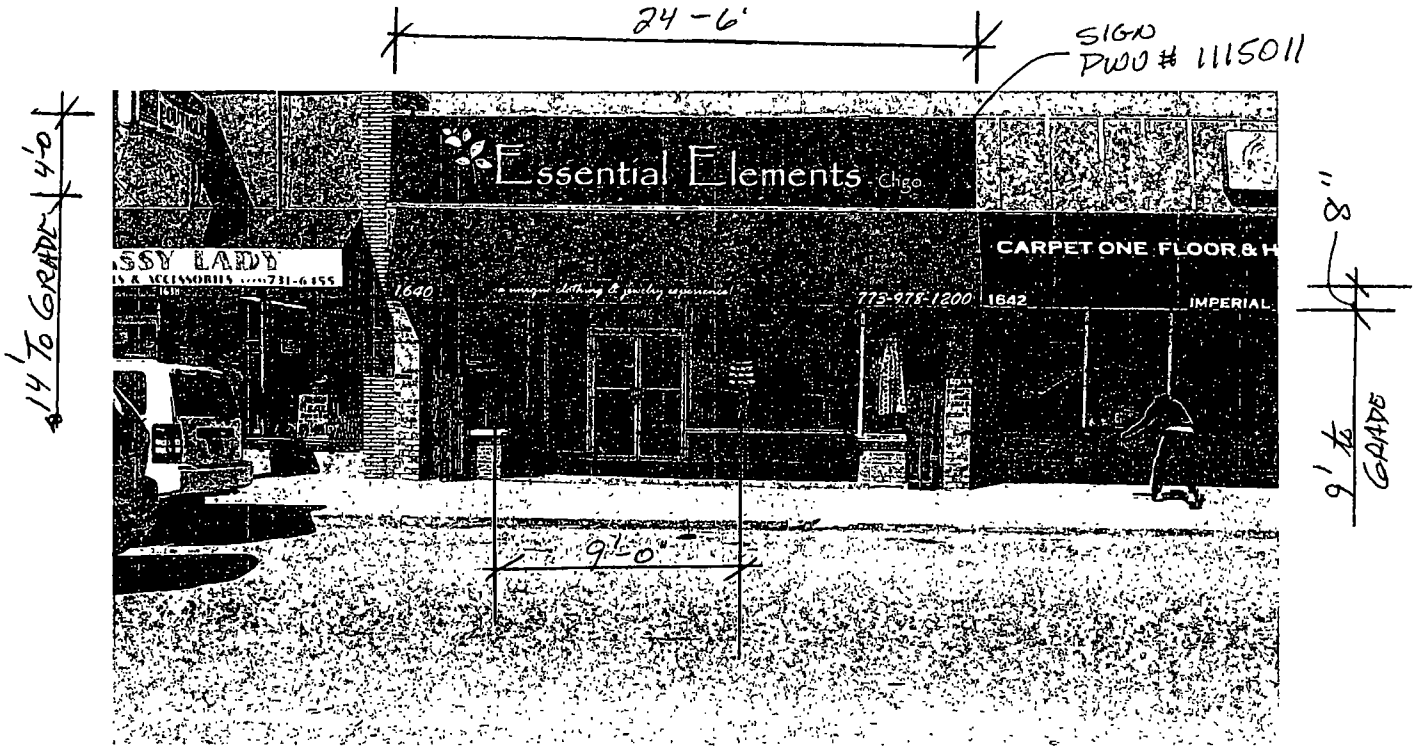
A 25% penalty will be added for payments received after due date.

The permit holder agrees to hold the City of Chicago harmless for any damage, relocation or replacement costs associated with damage, relocation or removal of private property caused by the City performing work in the public way.

Authority herein given and granted for a period of five (5) years from and after Date of Passage.

Alderman 

Michelle A. Harris 8th Ward



**OPTION #2 (1) SET OF BACK-LIT LETTERS & LOGO**

LETTERS - CAP "E" HEIGHT - 20.5" / LOWER CASE HEIGHT - 8.5"  
 LOGO HEIGHT - 30"  
 "-Chgo." - NON-ILLUM. 6.5" TO 4" HIGH LETTERS  
 OVERALL LENGTH - 21'-0"

APPROVED: \_\_\_\_\_ DATE: \_\_\_\_\_

**M-K SIGNS**  
 CHICAGO  
 4400 N. ELSTON AVE  
 CHICAGO, IL 60630  
 773-553-0100 / FAX 773-553-0223  
 EMAIL: AMIK@MKSIGNS.COM  
 @mksigns.net

<b>ESSENTIAL ELEMENTS-CHGO.</b> 1640 E. 87th ST. CHICAGO, IL		DATE	REVISION	SCALE	DATE
<small>Colors represented in this drawing are for presentation purposes only. They will not match your finished product exactly. Actual color samples can be obtained from your sales representative.</small> <small>This design is the original and unpublished work of MK SIGNS and may not be reproduced, copied or exhibited in any fashion without the expressed written consent of MK SIGNS. The rights to this design may be purchased.</small>				N.T.S.	7-18-14
				DESIGNER	SALES
				LM	RC
				FILE	DRAWING NUMBER
				Essential Elements	2320