



City of Chicago



O2015-1960

Office of the City Clerk

Document Tracking Sheet

Meeting Date:	3/18/2015
Sponsor(s):	Burnett (27)
Type:	Ordinance
Title:	Grant(s) of privilege in public way for Booker, a Series of Quinn Properties LLC, The
Committee(s) Assignment:	Committee on Transportation and Public Way

ORDINANCE
THE BOOZER, A SERIES OF QUINN PROPERTIES LLC
Acct. No. 396230 - 1
Permit No. 1116925

Be It Ordained by the City Council of the City of Chicago:

SECTION 1. Permission and authority are hereby given and granted to THE BOOZER, A SERIES OF QUINN PROPERTIES LLC, upon the terms and subject to the conditions of this ordinance to maintain and use, as now constructed, one (1) Bay Window(s) projecting over the public right-of-way adjacent to its premises known as 2715 W. Madison St..

Said Bay Window(s) at W. Madison Street measure(s):
One (1) at ten (10) feet in length, and two (2) feet in width for a total of twenty (20) square feet.

The location of said privilege shall be as shown on prints kept on file with the Department of Business Affairs and Consumer Protection and the Office of the City Clerk.

Said privilege shall be constructed in accordance with plans and specifications approved by the Department of Transportation (Division of Project Development).

This grant of privilege in the public way shall be subject to the provisions of Section 10-28-015 and all other required provisions of the Municipal Code of Chicago.

The grantee shall pay to the City of Chicago as compensation for the privilege #1116925 herein granted the sum of seventy-five (\$75.00) per annum in advance.

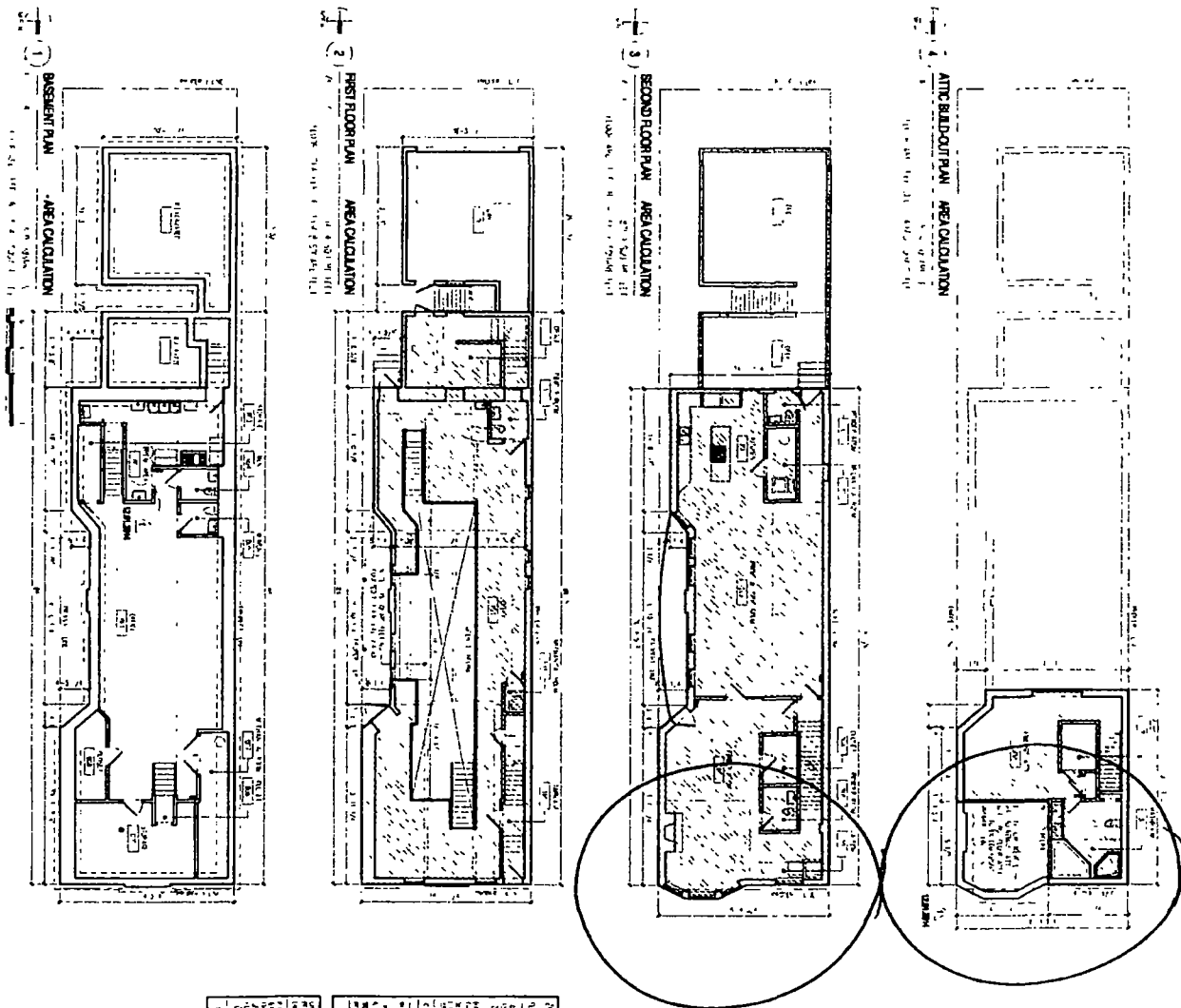
A 25% penalty will be added for payments received after due date.

The permit holder agrees to hold the City of Chicago harmless for any damage, relocation or replacement costs associated with damage, relocation or removal of private property caused by the City performing work in the public way.

Authority herein given and granted for a period of five (5) years from and after Date of Passage.

Alderman 

Walter Burnett Jr. 27th Ward



1	2	3	4	5	6	7	8	9	10	11	12	13	14	15	16	17	18	19	20	21	22	23	24	25	26	27	28	29	30	31	32	33	34	35	36	37	38	39	40	41	42	43	44	45	46	47	48	49	50	51	52	53	54	55	56	57	58	59	60	61	62	63	64	65	66	67	68	69	70	71	72	73	74	75	76	77	78	79	80	81	82	83	84	85	86	87	88	89	90	91	92	93	94	95	96	97	98	99	100
1	2	3	4	5	6	7	8	9	10	11	12	13	14	15	16	17	18	19	20	21	22	23	24	25	26	27	28	29	30	31	32	33	34	35	36	37	38	39	40	41	42	43	44	45	46	47	48	49	50	51	52	53	54	55	56	57	58	59	60	61	62	63	64	65	66	67	68	69	70	71	72	73	74	75	76	77	78	79	80	81	82	83	84	85	86	87	88	89	90	91	92	93	94	95	96	97	98	99	100

NO	DATE	DESCRIPTION
1	11/20/51	REPT. 27410
2	1/10/52	EXHIBIT 27410
3	1/10/52	EXHIBIT 27410
4	1/10/52	EXHIBIT 27410
5	1/10/52	EXHIBIT 27410
6	1/10/52	EXHIBIT 27410
7	1/10/52	EXHIBIT 27410
8	1/10/52	EXHIBIT 27410
9	1/10/52	EXHIBIT 27410
10	1/10/52	EXHIBIT 27410
11	1/10/52	EXHIBIT 27410
12	1/10/52	EXHIBIT 27410
13	1/10/52	EXHIBIT 27410
14	1/10/52	EXHIBIT 27410
15	1/10/52	EXHIBIT 27410
16	1/10/52	EXHIBIT 27410
17	1/10/52	EXHIBIT 27410
18	1/10/52	EXHIBIT 27410
19	1/10/52	EXHIBIT 27410
20	1/10/52	EXHIBIT 27410
21	1/10/52	EXHIBIT 27410
22	1/10/52	EXHIBIT 27410
23	1/10/52	EXHIBIT 27410
24	1/10/52	EXHIBIT 27410
25	1/10/52	EXHIBIT 27410
26	1/10/52	EXHIBIT 27410
27	1/10/52	EXHIBIT 27410
28	1/10/52	EXHIBIT 27410
29	1/10/52	EXHIBIT 27410
30	1/10/52	EXHIBIT 27410
31	1/10/52	EXHIBIT 27410
32	1/10/52	EXHIBIT 27410
33	1/10/52	EXHIBIT 27410
34	1/10/52	EXHIBIT 27410
35	1/10/52	EXHIBIT 27410
36	1/10/52	EXHIBIT 27410
37	1/10/52	EXHIBIT 27410
38	1/10/52	EXHIBIT 27410
39	1/10/52	EXHIBIT 27410
40	1/10/52	EXHIBIT 27410
41	1/10/52	EXHIBIT 27410
42	1/10/52	EXHIBIT 27410
43	1/10/52	EXHIBIT 27410
44	1/10/52	EXHIBIT 27410
45	1/10/52	EXHIBIT 27410
46	1/10/52	EXHIBIT 27410
47	1/10/52	EXHIBIT 27410
48	1/10/52	EXHIBIT 27410
49	1/10/52	EXHIBIT 27410
50	1/10/52	EXHIBIT 27410
51	1/10/52	EXHIBIT 27410
52	1/10/52	EXHIBIT 27410
53	1/10/52	EXHIBIT 27410
54	1/10/52	EXHIBIT 27410
55	1/10/52	EXHIBIT 27410
56	1/10/52	EXHIBIT 27410
57	1/10/52	EXHIBIT 27410
58	1/10/52	EXHIBIT 27410
59	1/10/52	EXHIBIT 27410
60	1/10/52	EXHIBIT 27410
61	1/10/52	EXHIBIT 27410
62	1/10/52	EXHIBIT 27410
63	1/10/52	EXHIBIT 27410
64	1/10/52	EXHIBIT 27410
65	1/10/52	EXHIBIT 27410
66	1/10/52	EXHIBIT 27410
67	1/10/52	EXHIBIT 27410
68	1/10/52	EXHIBIT 27410
69	1/10/52	EXHIBIT 27410
70	1/10/52	EXHIBIT 27410
71	1/10/52	EXHIBIT 27410
72	1/10/52	EXHIBIT 27410
73	1/10/52	EXHIBIT 27410
74	1/10/52	EXHIBIT 27410
75	1/10/52	EXHIBIT 27410
76	1/10/52	EXHIBIT 27410
77	1/10/52	EXHIBIT 27410
78	1/10/52	EXHIBIT 27410
79	1/10/52	EXHIBIT 27410
80	1/10/52	EXHIBIT 27410
81	1/10/52	EXHIBIT 27410
82	1/10/52	EXHIBIT 27410
83	1/10/52	EXHIBIT 27410
84	1/10/52	EXHIBIT 27410
85	1/10/52	EXHIBIT 27410
86	1/10/52	EXHIBIT 27410
87	1/10/52	EXHIBIT 27410
88	1/10/52	EXHIBIT 27410
89	1/10/52	EXHIBIT 27410
90	1/10/52	EXHIBIT 27410
91	1/10/52	EXHIBIT 27410
92	1/10/52	EXHIBIT 27410
93	1/10/52	EXHIBIT 27410

PROJECT NO. 144

SCALE AS NOTED

DRAWN BY

DATE 1/10/52

BY

1/10/52

1/10/52

1/10/52

1/10/52

1/10/52

1/10/52

1/10/52

1/10/52

1/10/52

1/10/52

1/10/52

1/10/52

1/10/52

1/10/52

1/10/52

1/10/52

1/10/52

1/10/52

1/10/52

1/10/52

1/10/52

1/10/52

1/10/52

1/10/52

1/10/52

1/10/52

1/10/52

1/10/52

1/10/52

1/10/52

1/10/52

1/10/52

1/10/52

1/10/52

1/10/52

1/10/52

1/10/52

1/10/52

1/10/52

1/10/52

1/10/52

1/10/52

1/10/52

1/10/52

1/10/52

1/10/52

1/10/52

1/10/52

1/10/52

1/10/52

1/10/52

1/10/52

1/10/52

1/10/52

1/10/52

1/10/52

1/10/52

1/10/52

1/10/52

1/10/52

1/10/52

1/10/52

1/10/52

1/10/52

1/10/52

1/10/52

1/10/52

1/10/52

1/10/52

1/10/52

1/10/52

1/10/52

1/10/52

1/10/52

1/10/52

1/10/52

1/10/52

1/10/52

1/10/52

1/10/52

1/10/52

1/10/52

1/10/52

1/10/52

1/10/52

1/10/52

1/10/52

1/10/52

1/10/52

1/10/52

1/10/52

1/10/52

1/10/52

1/10/52

1/10/52

1/10/52

1/10/52

1/10/52

1/10/52

1/10/52

1/10/52

1/10/52

1/10/52

1/10/52

1/10/52

1/10/52

1/10/52

1/10/52

1/10/52

1/10/52

1/10/52

1/10/52

1/10/52

1/10/52

1/10/52

1/10/52

1/10/52

1/10/52

1/10/52

1/10/52

1/10/52

1/10/52

1/10/52

1/10/52

1/10/52

1/10/52

1/10/52

1/10/52

1/10/52

1/10/52

1/10/52

1/10/52

1/10/52

1/10/52

1/10/52

1/10/52

1/10/52

1/10/52

1/10/52

1/10/52

1/10/52

1/10/52

1/10/52

1/10/52

1/10/52

1/10/52

1/10/52

1/10/52

1/10/52

1/10/52

1/10/52

1/10/52

1/10/52

1/10/52

1/10/52

1/10/52

1/10/52

1/10/52

1/10/52

1/10/52

1/10/52

1/10/52

1/10/52

1/10/52

1/10/52

1/10/52

1/10/52

1/10/52

1/10/52

1/10/52

1/10/52

1/10/52

1/10/52

1/10/52

1/10/52

1/10/52

1/10/52

1/10/52

1/10/52

1/10/52

1/10/52

1/10/52

1/10/52

1/10/52

1/10/52

1/10/52

1/10/52

1/10/52

1/10/52

1/10/52

1/10/52

1/10/52

1/10/52

1/10/52

1/10/52

1/10/52

1/10/52

1/10/52

1/10/52

1/10/52

1/10/52

1/10/52

1/10/52

1/10/52

1/10/52

1/10/52

1/10/52

1/10/52

1/10/52

1/10/52

1/10/52

1/10/52

1/10/52

1/10/52

1/10/52

1/10/52

1/10/52

1/10/52

1/10/52

1/10/52

1/10/52

1/10/52

1/10/52

1/10/52

1/10/52

1/10/52

1/10/52

1/10/52

1/10/52

1/10/52

1/10/52

1/10/52

1/10/52

1/10/52

1/10/52

1/10/52

1/10/52

1/10/52

1/10/52

1/10/52

1/10/52

1/10/52

1/10/52

1/10/52

1/10/52

1/10/52

1/10/52

1/10/52

1/10/52

1/10/52

1/10/52

1/10/52

1/10/52

1/10/52

1/10/52

1/10/52

1/10/52

1/10/52

1/10/52

1/10/52

1/10/52

1/10/52

1/10/52

1/10/52

1/10/52

1/10/52

1/10/52

1/10/52

1/10/52

1/10/52

1/10/52

1/10/52

1/10/52

1/10/52

1/10/52

1/10/52

1/10/52

1/10/52

1/10/52

1/10/52

1/10/52

1/10/52

1/10/52

1/10/52

1/10/52

1/10/52

1/10/52

1/10/52

1/10/52

1/10/52

1/10/52

1/10/52

1/10/52

1/10/52

1/10/52

1/10/52

1/10/52

1/10/52

1/10/52

1/10/52

1/10/52

1/10/52

1/10/52

1/10/52

1/10/52

1/10/52

1/10/52

1/10/52

1/10/52

1/10/52

1/10/52

1/10/52

1/10/52

1/10/52

1/10/52

1/10/52

1/10/52

1/10/52

1/10/52

1/10/52

1/10/52

1/10/52

1/10/52

1/10/52

1/10/52

1/10/52

1/10/52

1/10/52

1/10/52

1/10/52

1/10/52

1/10/52

1/10/52

1/10/52

1/10/52

1/10/52

1/10/52

1/10/52

1/10/52

1/10/52

1/10/52

1/10/52

1/10/52

1/10/52

1/10/52

1/10/52

1/10/52

1/10/52

1/10/52

1/10/52

1/10/52

1/10/52

1/10/52

1/10/52

1/10/52

1/10/52

1/10/52

1/10/52

1/10/52

1/10/52

1/10/52

1/10/52

1/10/52

1/10/52

1/10/52

1/10/52

1/10/52

1/10/52

1/10/52

1/10/52

1/10/52

1/10/52

1/10/52

1/10/52

1/10/52

1/10/52

1/10/52

1/10/52

1/10/52

1/10/52

1/10/52

1/10/52

1/10/52

1/10/52

1/10/52

1/10/52

1/10/52

1/10/52

1/10/52

1/10/52

1/10/52

1/10/52

1/10/52

1/10/52

1/10/52

1/10/52

1/10/52

1/10/52

1/10/52

1/10/52

1/10/52

1/10/52

1/10/52

1/10/52

1/10/52

1/10/52

1/10/52

1/10/52

1/10/52

1/10/52

1/

2715 WEST MADISON STREET
CHICAGO, ILLINOIS 60612
REMODEL INTERIOR AND EXTERIOR

BRIAN FRYZEL

[illegible]

LICENSED TO CONTACT
 FROM 10/1/83
 10/1/83
 STATE OF ALABAMA

FAR DIAGRAMS

AO.1