



# City of Chicago



SO2015-1354

Office of the City Clerk

## Document Tracking Sheet

<b>Meeting Date:</b>	3/18/2015
<b>Sponsor(s):</b>	City Clerk (transmitted by)
<b>Type:</b>	Ordinance
<b>Title:</b>	Zoning Reclassification Map No. 1-G at 1465 W Erie St - App No. 18290T1
<b>Committee(s) Assignment:</b>	Committee on Zoning, Landmarks and Building Standards

SUB. TO TYPE 1

#18290 TI  
INTRO DATE  
3-18-15

**ORDINANCE**

**BE IT ORDAINED BY THE CITY COUNCIL OF THE CITY OF CHICAGO:**

**SECTION 1.** Title 17 of the Municipal Code of Chicago, the Chicago Zoning Ordinance, is hereby amended by changing all of the RS-3 Residential Single-Unit (Detached Housing) District, as shown on Map 1-G in the area bounded by:

**West Erie Street, a line 150.00 feet east of North Armour Street, the alley south and parallel to West Erie Street and a line 175.07 feet east of North Armour Street.**

To those of **RM-4.5** Residential Multi-Unit District

**SECTION 2.** This ordinance takes effect after its passage and approval.

---

Common Address of Property: 1465 West Erie Street, Chicago, IL 60642

**NARRATIVE AND PLANS  
FOR THE PROPOSED REZONING  
AT  
1465 WEST ERIE STREET**

The Application to change zoning for 1465 West Erie Street from RS-3, Residential Single-Unit (Detached House) District to RM-4.5 Residential Multi-Unit District. The Applicant intends to construct a three (3) unit residential building.

**LOT AREA:** 3,125 SQUARE FEET

**FLOOR AREA RATIO:** 1.4

**BUILDING AREA:** 4,390 SQUARE FEET

**DENSITY, LOT AREA PER DWELLING UNIT:** 1,041 SQUARE FEET

**OFF-STREET PARKING:** THE PROPERTY WILL HAVE A THREE CAR GARAGE.

**FRONT SETBACK:** 8 FEET 10 INCHES

**REAR SETBACK:** 20 FEET (APPLICANT WILL SEEK A VARIATION FOR YARD REDUCTION).

**SIDE SETBACK:** 2 FEET (WEST) 3 FEET (EAST)

**REAR YARD OPEN SPACE:** 203 SQUARE FEET

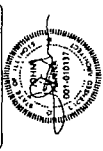
**BUILDING HEIGHT:** 37 FEET 10 INCHES

**FINAL FOR PUBLICATION**

**HANNA ARCHITECTS, INC.**  
 110 W. WASHINGTON  
 CHICAGO, IL 60606  
 (312) 756-1800  
 FAX (312) 756-1801  
 PROFESSIONAL DESIGN FIRM  
 LICENSE NUMBER 14-00045

WARNING: This drawing is the property of Hanna Architects, Inc. and is not to be reproduced, stored in a retrieval system, or transmitted in any form or by any means, electronic, mechanical, photocopying, recording, or by any information storage and retrieval system, without the prior written permission of Hanna Architects, Inc.

REGISTERED ARCHITECT  
 HANNA ARCHITECTS, INC.  
 LICENSED FOR THE STATE OF ILLINOIS  
 LICENSE NUMBER 14-00045

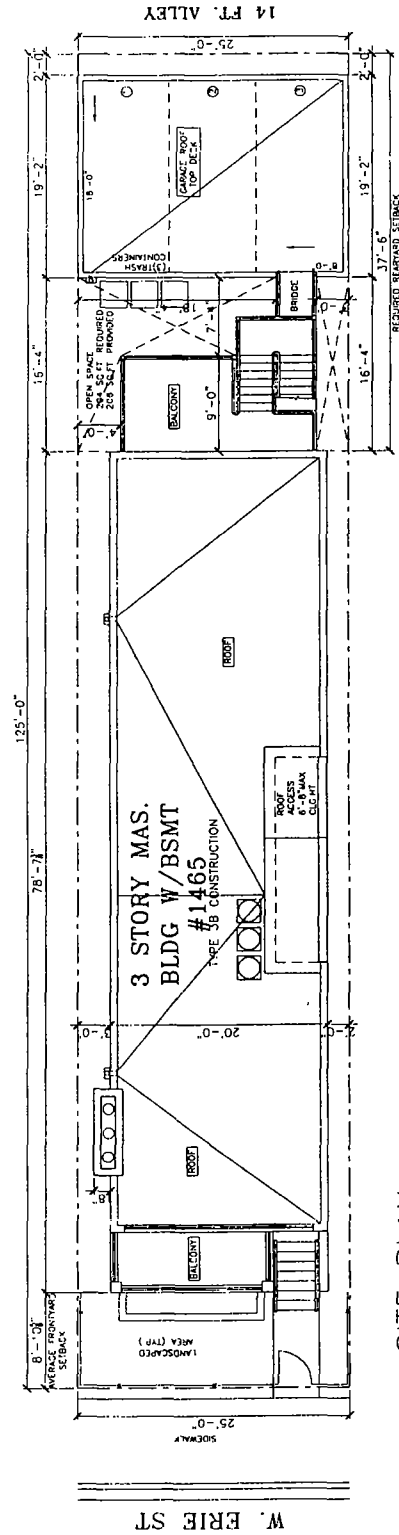


PROJECT NAME & ADDRESS  
 1465 W. ERIE ST  
 3 UNIT APART  
 BLDG W/BSMT  
 CHICAGO, ILLINOIS

SHEET TITLE  
 SITE PLAN  
 & NOTES

FULLNAME

SHEET NUMBER  
 A-1

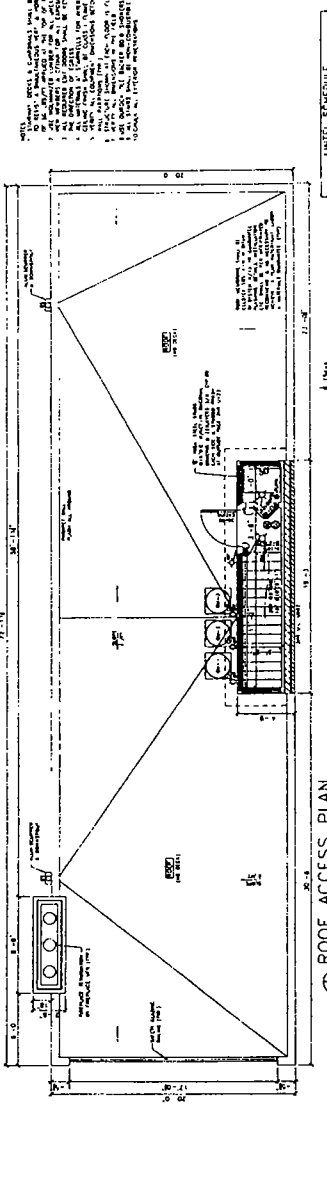
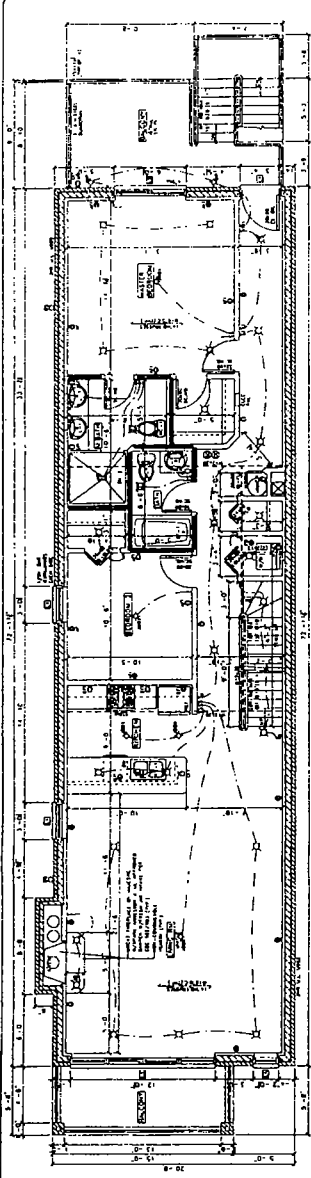


**SITE PLAN**  
 SCALE 3/16" = 1'-0"

FINAL FOR PUBLICATION

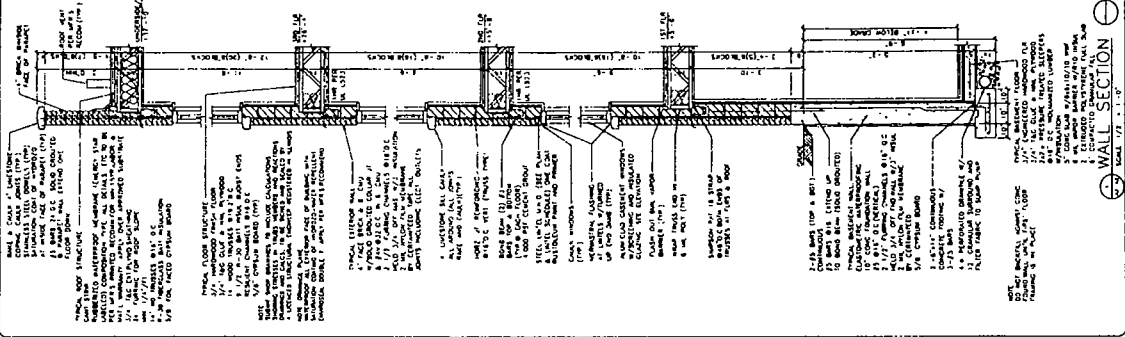
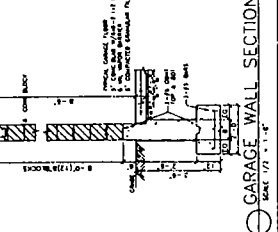
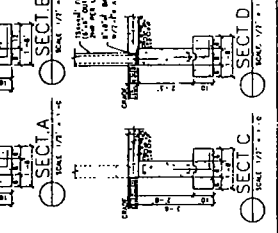
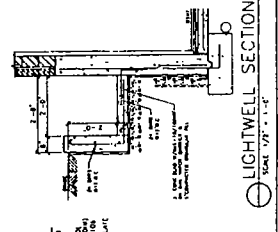
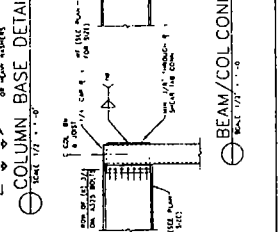
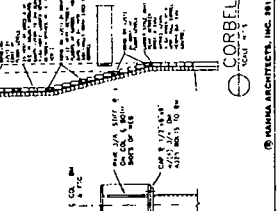
SYMBOL	A-2
SECRET NUMBER	

**FINAL FOR PUBLICATION**



UNIT SCHEDULE

UNIT	NO.	AREA	FINISH	NOTE
1	1	1,200 S.F.	1" CONCRETE	1" CONCRETE
2	2	1,200 S.F.	1" CONCRETE	1" CONCRETE
3	3	1,200 S.F.	1" CONCRETE	1" CONCRETE
4	4	1,200 S.F.	1" CONCRETE	1" CONCRETE
5	5	1,200 S.F.	1" CONCRETE	1" CONCRETE
6	6	1,200 S.F.	1" CONCRETE	1" CONCRETE
7	7	1,200 S.F.	1" CONCRETE	1" CONCRETE
8	8	1,200 S.F.	1" CONCRETE	1" CONCRETE
9	9	1,200 S.F.	1" CONCRETE	1" CONCRETE
10	10	1,200 S.F.	1" CONCRETE	1" CONCRETE
11	11	1,200 S.F.	1" CONCRETE	1" CONCRETE
12	12	1,200 S.F.	1" CONCRETE	1" CONCRETE
13	13	1,200 S.F.	1" CONCRETE	1" CONCRETE
14	14	1,200 S.F.	1" CONCRETE	1" CONCRETE
15	15	1,200 S.F.	1" CONCRETE	1" CONCRETE
16	16	1,200 S.F.	1" CONCRETE	1" CONCRETE
17	17	1,200 S.F.	1" CONCRETE	1" CONCRETE
18	18	1,200 S.F.	1" CONCRETE	1" CONCRETE
19	19	1,200 S.F.	1" CONCRETE	1" CONCRETE
20	20	1,200 S.F.	1" CONCRETE	1" CONCRETE
21	21	1,200 S.F.	1" CONCRETE	1" CONCRETE
22	22	1,200 S.F.	1" CONCRETE	1" CONCRETE
23	23	1,200 S.F.	1" CONCRETE	1" CONCRETE
24	24	1,200 S.F.	1" CONCRETE	1" CONCRETE
25	25	1,200 S.F.	1" CONCRETE	1" CONCRETE
26	26	1,200 S.F.	1" CONCRETE	1" CONCRETE
27	27	1,200 S.F.	1" CONCRETE	1" CONCRETE
28	28	1,200 S.F.	1" CONCRETE	1" CONCRETE
29	29	1,200 S.F.	1" CONCRETE	1" CONCRETE
30	30	1,200 S.F.	1" CONCRETE	1" CONCRETE
31	31	1,200 S.F.	1" CONCRETE	1" CONCRETE
32	32	1,200 S.F.	1" CONCRETE	1" CONCRETE
33	33	1,200 S.F.	1" CONCRETE	1" CONCRETE
34	34	1,200 S.F.	1" CONCRETE	1" CONCRETE
35	35	1,200 S.F.	1" CONCRETE	1" CONCRETE
36	36	1,200 S.F.	1" CONCRETE	1" CONCRETE
37	37	1,200 S.F.	1" CONCRETE	1" CONCRETE
38	38	1,200 S.F.	1" CONCRETE	1" CONCRETE
39	39	1,200 S.F.	1" CONCRETE	1" CONCRETE
40	40	1,200 S.F.	1" CONCRETE	1" CONCRETE
41	41	1,200 S.F.	1" CONCRETE	1" CONCRETE
42	42	1,200 S.F.	1" CONCRETE	1" CONCRETE
43	43	1,200 S.F.	1" CONCRETE	1" CONCRETE
44	44	1,200 S.F.	1" CONCRETE	1" CONCRETE
45	45	1,200 S.F.	1" CONCRETE	1" CONCRETE
46	46	1,200 S.F.	1" CONCRETE	1" CONCRETE
47	47	1,200 S.F.	1" CONCRETE	1" CONCRETE
48	48	1,200 S.F.	1" CONCRETE	1" CONCRETE
49	49	1,200 S.F.	1" CONCRETE	1" CONCRETE
50	50	1,200 S.F.	1" CONCRETE	1" CONCRETE
51	51	1,200 S.F.	1" CONCRETE	1" CONCRETE
52	52	1,200 S.F.	1" CONCRETE	1" CONCRETE
53	53	1,200 S.F.	1" CONCRETE	1" CONCRETE
54	54	1,200 S.F.	1" CONCRETE	1" CONCRETE
55	55	1,200 S.F.	1" CONCRETE	1" CONCRETE
56	56	1,200 S.F.	1" CONCRETE	1" CONCRETE
57	57	1,200 S.F.	1" CONCRETE	1" CONCRETE
58	58	1,200 S.F.	1" CONCRETE	1" CONCRETE
59	59	1,200 S.F.	1" CONCRETE	1" CONCRETE
60	60	1,200 S.F.	1" CONCRETE	1" CONCRETE
61	61	1,200 S.F.	1" CONCRETE	1" CONCRETE
62	62	1,200 S.F.	1" CONCRETE	1" CONCRETE
63	63	1,200 S.F.	1" CONCRETE	1" CONCRETE
64	64	1,200 S.F.	1" CONCRETE	1" CONCRETE
65	65	1,200 S.F.	1" CONCRETE	1" CONCRETE
66	66	1,200 S.F.	1" CONCRETE	1" CONCRETE
67	67	1,200 S.F.	1" CONCRETE	1" CONCRETE
68	68	1,200 S.F.	1" CONCRETE	1" CONCRETE
69	69	1,200 S.F.	1" CONCRETE	1" CONCRETE
70	70	1,200 S.F.	1" CONCRETE	1" CONCRETE
71	71	1,200 S.F.	1" CONCRETE	1" CONCRETE
72	72	1,200 S.F.	1" CONCRETE	1" CONCRETE
73	73	1,200 S.F.	1" CONCRETE	1" CONCRETE
74	74	1,200 S.F.	1" CONCRETE	1" CONCRETE
75	75	1,200 S.F.	1" CONCRETE	1" CONCRETE
76	76	1,200 S.F.	1" CONCRETE	1" CONCRETE
77	77	1,200 S.F.	1" CONCRETE	1" CONCRETE
78	78	1,200 S.F.	1" CONCRETE	1" CONCRETE
79	79	1,200 S.F.	1" CONCRETE	1" CONCRETE
80	80	1,200 S.F.	1" CONCRETE	1" CONCRETE
81	81	1,200 S.F.	1" CONCRETE	1" CONCRETE
82	82	1,200 S.F.	1" CONCRETE	1" CONCRETE
83	83	1,200 S.F.	1" CONCRETE	1" CONCRETE
84	84	1,200 S.F.	1" CONCRETE	1" CONCRETE
85	85	1,200 S.F.	1" CONCRETE	1" CONCRETE
86	86	1,200 S.F.	1" CONCRETE	1" CONCRETE
87	87	1,200 S.F.	1" CONCRETE	1" CONCRETE
88	88	1,200 S.F.	1" CONCRETE	1" CONCRETE
89	89	1,200 S.F.	1" CONCRETE	1" CONCRETE
90	90	1,200 S.F.	1" CONCRETE	1" CONCRETE
91	91	1,200 S.F.	1" CONCRETE	1" CONCRETE
92	92	1,200 S.F.	1" CONCRETE	1" CONCRETE
93	93	1,200 S.F.	1" CONCRETE	1" CONCRETE
94	94	1,200 S.F.	1" CONCRETE	1" CONCRETE
95	95	1,200 S.F.	1" CONCRETE	1" CONCRETE
96	96	1,200 S.F.	1" CONCRETE	1" CONCRETE
97	97	1,200 S.F.	1" CONCRETE	1" CONCRETE
98	98	1,200 S.F.	1" CONCRETE	1" CONCRETE
99	99	1,200 S.F.	1" CONCRETE	1" CONCRETE
100	100	1,200 S.F.	1" CONCRETE	1" CONCRETE



**ANKA**  
 1417 N. WASHINGTON  
 CHICAGO 4, ILLINOIS 60610  
 (312) 734-1400  
 ARCHITECTS  
 PROJECT NO. 100-100-100  
 DRAWING NO. 100-100-100  
 DATE: 10/1/10

**ANKA**  
 1417 N. WASHINGTON  
 CHICAGO 4, ILLINOIS 60610  
 (312) 734-1400  
 ARCHITECTS  
 PROJECT NO. 100-100-100  
 DRAWING NO. 100-100-100  
 DATE: 10/1/10

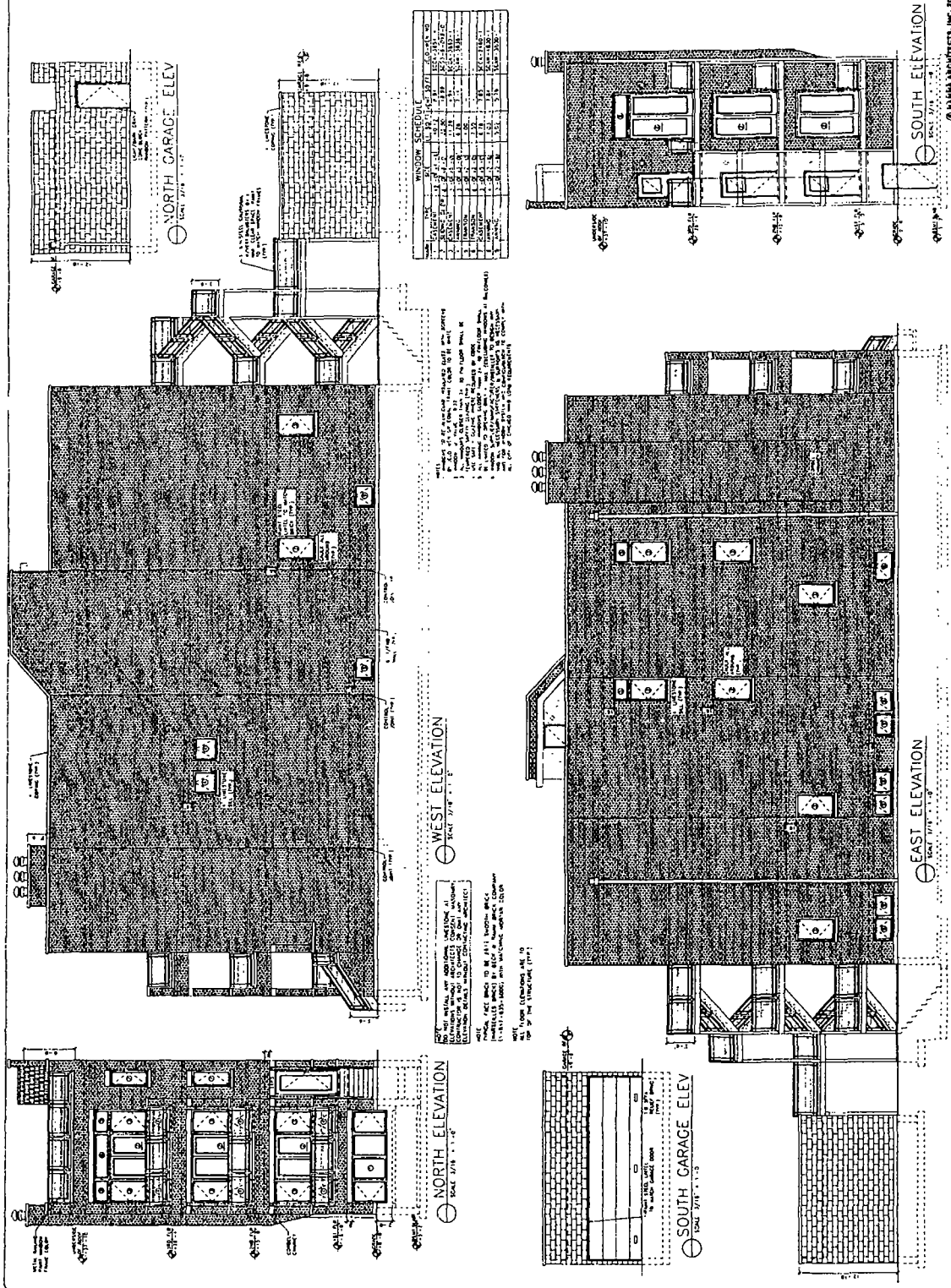
**PROJECT NAME & ADDRESS**  
 1465 W. ERIE ST  
 3 UNIT APART  
 1100C W/RENT  
 CHICAGO ILLINOIS

**SHEET TITLE**  
 BUILDING  
 ELEVATIONS

**DATE**  
 10/1/10

**SCALE**  
 1/8" = 1'-0"

**PROJECT NUMBER**  
 A-4



FINAL FOR PUBLICATION