



# City of Chicago



Or2016-27

Office of the City Clerk

## Document Tracking Sheet

<b>Meeting Date:</b>	1/13/2016
<b>Sponsor(s):</b>	Burnett (27)
<b>Type:</b>	Order
<b>Title:</b>	Issuance of permits for sign(s)/signboard(s) at 1515 N Halsted St - west elevation - Permit No. 100629557
<b>Committee(s) Assignment:</b>	Committee on Zoning, Landmarks and Building Standards

Committee on Zoning, Landmarks  
and Building Standards  
City Council Meeting  
Alderman Walter Burnett, Jr.  
Sign Order

ORDERED, that the Commissioner of Buildings is hereby directed to issue  
a sign permit to:

OLYMPIC SIGNS, INC.  
1130 N. GARFIELD  
LOMBARD, IL 60148

For the erection of a sign/signboard over 24 feet in height and/or over 100 square  
feet (in area of one face) at:

SAKS FIFTH AVENUE – OFF 5TH  
1515 N. HALSTED STREET  
CHICAGO, IL 60642

Dimensions: length 14'-3" height 7'

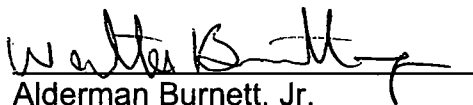
Height above grade/roof to top of sign 32 feet

Total Square Foot Area 100 square feet

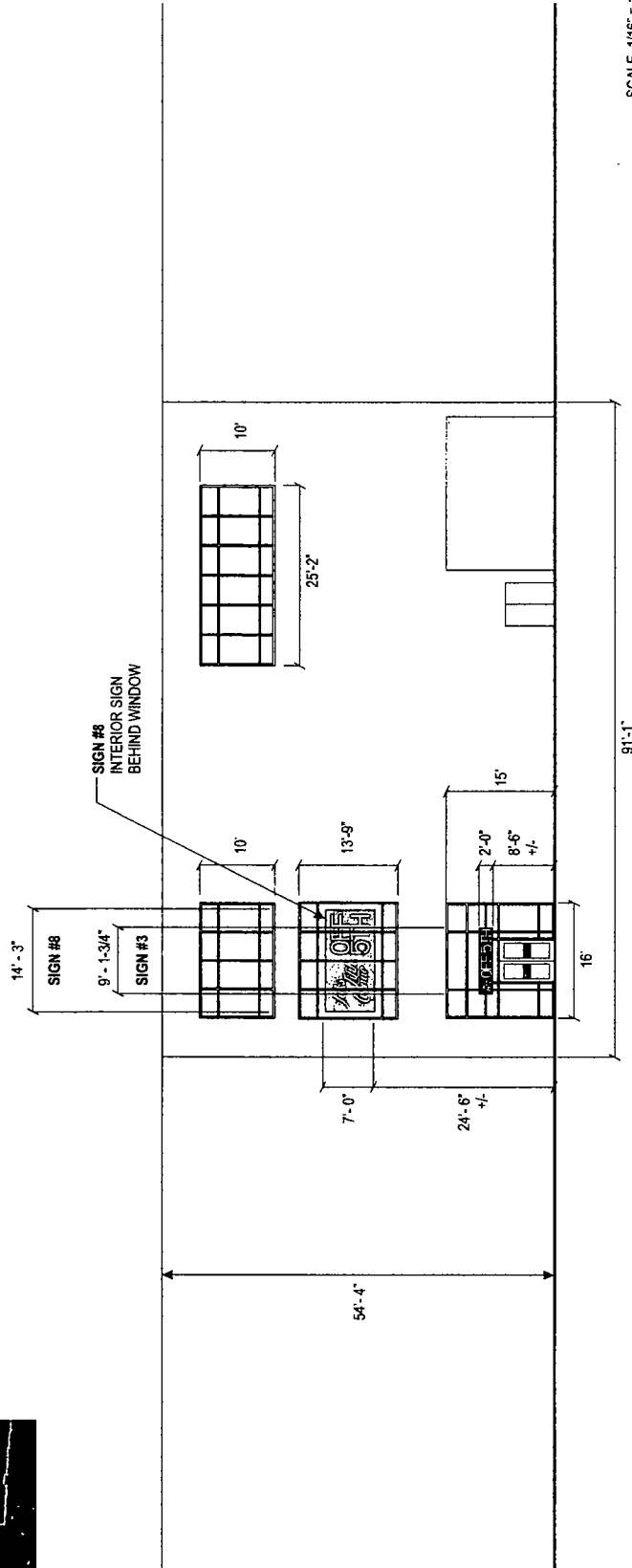
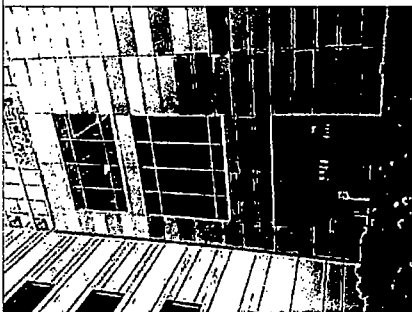
Elevation WEST

Permit #100629557

Such sign shall comply with all applicable provisions of TITLE 17 of the Chicago  
Zoning Ordinance and all other applicable provisions of the Municipal Code of  
the City of Chicago governing the construction and maintenance of outdoor  
signs, signboards and structures.

  
Alderman Burnett, Jr.  
Ward #27





SCALE, 1/16" = 1'-0"

SCALE: 1/16" = 1'-0"

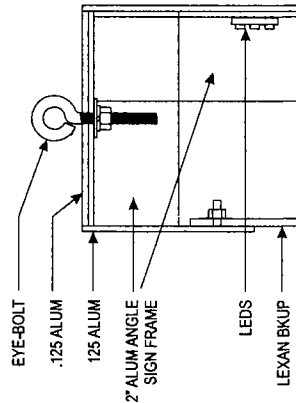
**PLAZA PEDWAY ELEVATION**

Dwg File Location: Design 2\LINDA\Dwgs\Saks\Saks Lincoln Park Chicago, IL\Saks Lincoln Park New City Chicago R6 Page 7 of 15

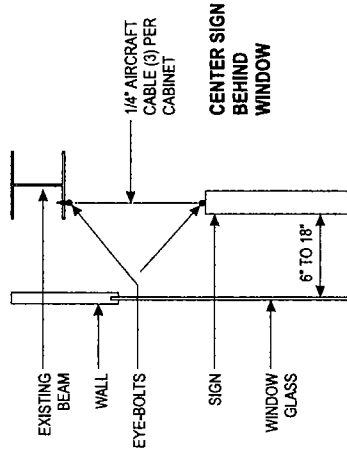
<p><b>2401 I-35 S San Marcos, TX 78666</b>  <b>(512) 392-0800</b> (512) 392-3363 Fax  <b>www.signcrafters.net</b>  <b>www.signcrafters1.net</b></p>		<p><b>CLIENT</b> Saks</p>		<p><b>FILE</b> Saks Lincoln Park New City Chicago R8</p>		<p><b>DATE</b> 12/21/15</p>	
		<p><b>APPROVAL</b></p>		<p><b>DATE</b></p>		<p><b>WITH CHANGES</b> AS NOTED</p>	
		<p><b>TYPE OF SIGNAGE</b> As Shown</p>				<p><b>SCALE</b> Noted</p>	
		<p><b>INSTALL.</b> As indicated</p>		<p><b>LOCATION</b> 1515 N. Halsted Street, Chicago, IL 60642</p>			

NO VISIBLE FASTENERS ON SIGN FACE

NOTE: FINISH ALL INTERIOR ALUMINUM SURFACES W/LIGHT ENHANCEMENT PAINT.



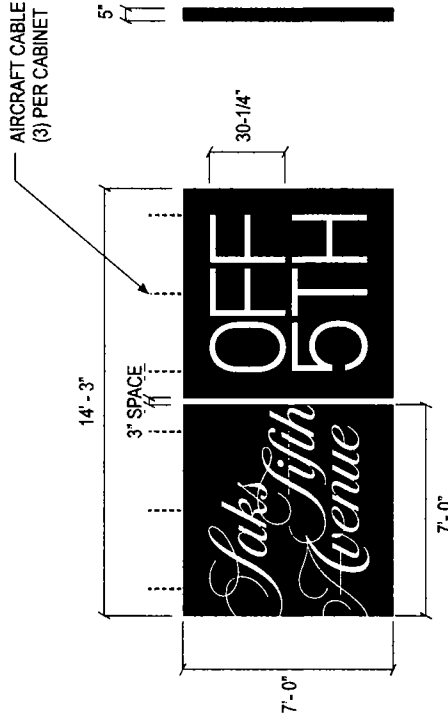
SECTION @ TOP OF SIGN  
NTS



PROPOSED METHOD OF ATTACHMENT  
NTS

SIGN AREA: 99.8 SF

SIGN WEIGHT: 449 lbs



COPY  
ROUT OUT AND BACK UP  
W/WHITE LEXAN.

ILLUMINATION  
WHITE LED's.

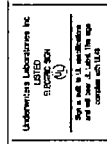
NOTE  
SERVICE ACCESS THRU  
BACK OF CABINETS

FACES AND RETURNS  
FAB .125 ALUMINUM PAINTED  
BLACK. (5\"/>

BACKS  
.125 ALUM., BLACK.

INSTALL  
SUSPEND SIGNS FROM  
AIRCRAFT CABLE.  
SEE DETAIL @ LEFT.

ELECTRICAL DATA  
PER SET:  
6 Power supplies  
120v  
6.6 amps  
368 watts  
1 branch circuit (20 amp)  
512 LED's  
(Principal Spec Value LED's)




APPLY UL LABELS IN INCONSPICUOUS LOCATION OUT OF PUBLIC VIEW

(1) ONE SET REQUIRED  
SCALE: 1/4" = 1'-0"

## NON ILLUMINATED INTERIOR SIGN (BEHIND WINDOW) SIGN #8

Dwg File Location: Design 2\LUNDA\Draws\Saks\Saks Lincoln Park Chicago, IL\Saks Lincoln Park New City Chicago R6

<p>This original unduplicated drawing is the property of Sign Crafters, Inc. and is submitted for personal use only in conjunction with the planning of the submitted project. This drawing is not to be reproduced, used or exhibited in any fashion without permission from Sign Crafters, Inc. The drawing is not to be used for any other project or for any other purpose without the written permission of Sign Crafters, Inc. This representation is for illustrative purposes only and may not accurately reflect actual size or specifications. Sign Crafters, Inc. does not warrant the accuracy of the drawing, and any warranties between Sign Crafters, Inc. and the client are hereby withdrawn between Sign Crafters, Inc. and the client as of the date of this drawing.</p>			
CLIENT	Saks	FILE	Saks Lincoln Park New City Chicago R6
APPROVAL		DATE	
TYPE OF SIGNAGE		As Shown	
INSTALL		As Indicated	
		LOCATION	1515 N. Halsted Street, Chicago, IL 60642
		WITH CHANGES	AS NOTED
		SCALE	Noted



**SIGN**  
**CRAFTERS**  
INCORPORATED

2401 I-35 S. San Marcos, TX 78666  
(512) 392-0900 (512) 392-3363 Fax  
signcrafters@signcrafters.net  
www.signcrafters.net