



# City of Chicago



O2016-6644

Office of the City Clerk

## Document Tracking Sheet

<b>Meeting Date:</b>	9/14/2016
<b>Sponsor(s):</b>	Moreno (1)
<b>Type:</b>	<i>Ordinance</i>
<b>Title:</b>	Grant(s) of privilege in public way for 1250 North Paulina Condo Assn - planter
<b>Committee(s) Assignment:</b>	Committee on Transportation and Public Way

ORDINANCE  
1250 NORTH PAULINA CONDOMINIUM ASSOCIATION  
Acct. No. 363771 - 1  
Permit No. 1124355

*Be It Ordained by the City Council of the City of Chicago:*

SECTION 1. Permission and authority are hereby given and granted to 1250 NORTH PAULINA CONDOMINIUM ASSOCIATION, upon the terms and subject to the conditions of this ordinance to maintain and use, as now constructed, one (1) Planter(s) on the public right-of-way for beautification purposes adjacent to its premises known as 1250 N. Paulina St..

Said Planter(s) at N. Moorman measure(s):

One (1) at twenty-two (22) feet in length, and three (3) feet in width for a total of sixty-six (66) square feet.

Grantee must allow the required clear and unobstructed space for pedestrian passage at all times per rules and regulations approved by the Department of Transportation.

The location of said privilege shall be as shown on prints kept on file with the Department of Business Affairs and Consumer Protection and the Office of the City Clerk.

Said privilege shall be constructed in accordance with plans and specifications approved by the Department of Planning and Development and Department of Transportation (Division of Project Development).

This grant of privilege in the public way shall be subject to the provisions of Section 10-28-015 and all other required provisions of the Municipal Code of Chicago.

The grantee shall pay to the City of Chicago as compensation for the privilege #1124355 herein granted the sum of zero (\$.00) per annum in advance.

A 25% penalty will be added for payments received after due date.

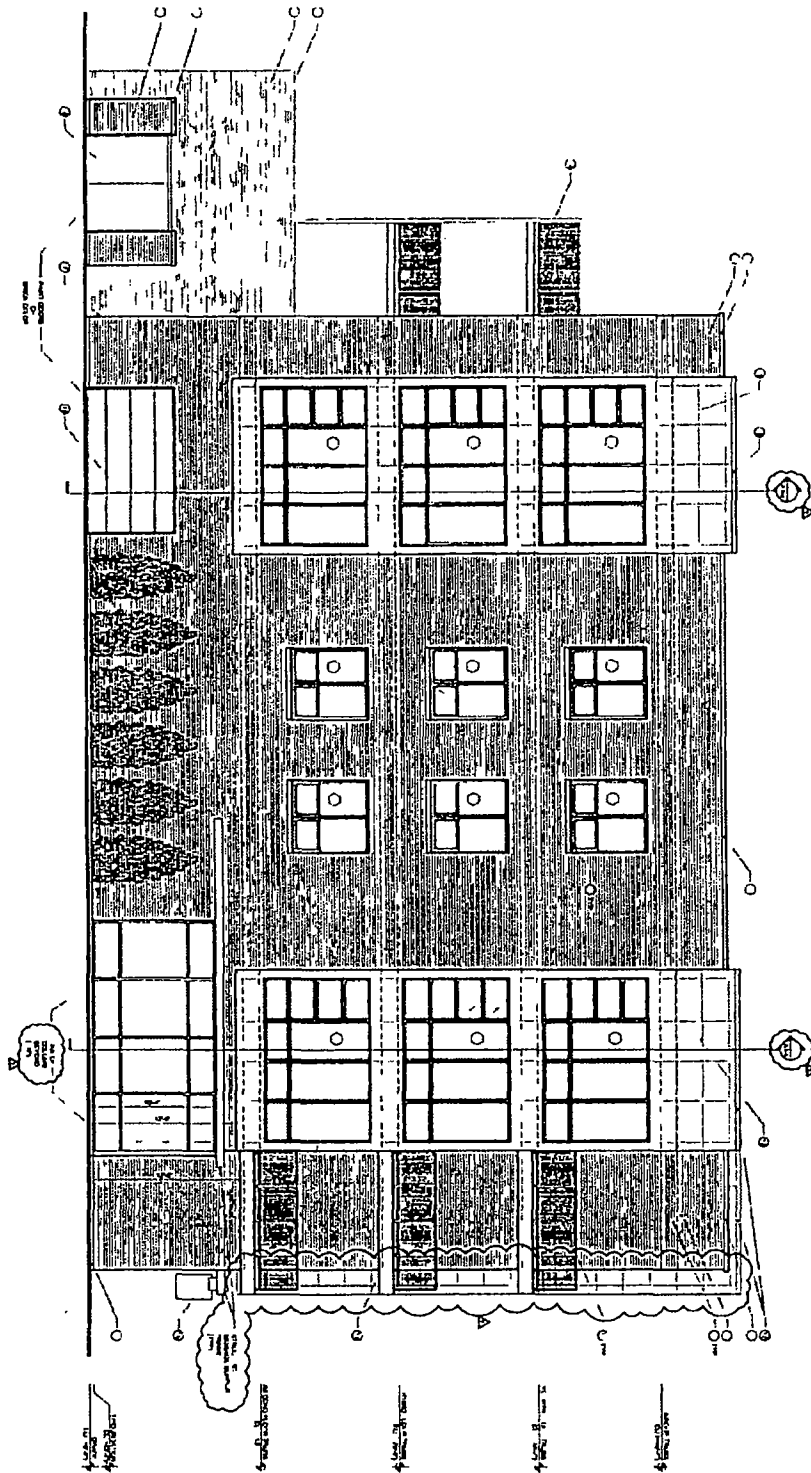
The permit holder agrees to hold the City of Chicago harmless for any damage, relocation or replacement costs associated with damage, relocation or removal of private property caused by the City performing work in the public way.

Authority herein given and granted for a period of five (5) years from and after 09/08/2016.

Alderman \_\_\_\_\_

  
Proco Joe Moreno 1st Ward

① SOUTH ELEVATION



NOTES	
1	SEE PLAN FOR LOCATION OF THIS ELEVATION
2	SEE PLAN FOR LOCATION OF THIS ELEVATION
3	SEE PLAN FOR LOCATION OF THIS ELEVATION
4	SEE PLAN FOR LOCATION OF THIS ELEVATION
5	SEE PLAN FOR LOCATION OF THIS ELEVATION
6	SEE PLAN FOR LOCATION OF THIS ELEVATION
7	SEE PLAN FOR LOCATION OF THIS ELEVATION
8	SEE PLAN FOR LOCATION OF THIS ELEVATION
9	SEE PLAN FOR LOCATION OF THIS ELEVATION
10	SEE PLAN FOR LOCATION OF THIS ELEVATION
11	SEE PLAN FOR LOCATION OF THIS ELEVATION
12	SEE PLAN FOR LOCATION OF THIS ELEVATION
13	SEE PLAN FOR LOCATION OF THIS ELEVATION
14	SEE PLAN FOR LOCATION OF THIS ELEVATION
15	SEE PLAN FOR LOCATION OF THIS ELEVATION
16	SEE PLAN FOR LOCATION OF THIS ELEVATION
17	SEE PLAN FOR LOCATION OF THIS ELEVATION
18	SEE PLAN FOR LOCATION OF THIS ELEVATION
19	SEE PLAN FOR LOCATION OF THIS ELEVATION
20	SEE PLAN FOR LOCATION OF THIS ELEVATION
21	SEE PLAN FOR LOCATION OF THIS ELEVATION
22	SEE PLAN FOR LOCATION OF THIS ELEVATION
23	SEE PLAN FOR LOCATION OF THIS ELEVATION
24	SEE PLAN FOR LOCATION OF THIS ELEVATION
25	SEE PLAN FOR LOCATION OF THIS ELEVATION
26	SEE PLAN FOR LOCATION OF THIS ELEVATION
27	SEE PLAN FOR LOCATION OF THIS ELEVATION
28	SEE PLAN FOR LOCATION OF THIS ELEVATION
29	SEE PLAN FOR LOCATION OF THIS ELEVATION
30	SEE PLAN FOR LOCATION OF THIS ELEVATION
31	SEE PLAN FOR LOCATION OF THIS ELEVATION
32	SEE PLAN FOR LOCATION OF THIS ELEVATION
33	SEE PLAN FOR LOCATION OF THIS ELEVATION
34	SEE PLAN FOR LOCATION OF THIS ELEVATION
35	SEE PLAN FOR LOCATION OF THIS ELEVATION
36	SEE PLAN FOR LOCATION OF THIS ELEVATION
37	SEE PLAN FOR LOCATION OF THIS ELEVATION
38	SEE PLAN FOR LOCATION OF THIS ELEVATION
39	SEE PLAN FOR LOCATION OF THIS ELEVATION
40	SEE PLAN FOR LOCATION OF THIS ELEVATION
41	SEE PLAN FOR LOCATION OF THIS ELEVATION
42	SEE PLAN FOR LOCATION OF THIS ELEVATION
43	SEE PLAN FOR LOCATION OF THIS ELEVATION
44	SEE PLAN FOR LOCATION OF THIS ELEVATION
45	SEE PLAN FOR LOCATION OF THIS ELEVATION
46	SEE PLAN FOR LOCATION OF THIS ELEVATION
47	SEE PLAN FOR LOCATION OF THIS ELEVATION
48	SEE PLAN FOR LOCATION OF THIS ELEVATION
49	SEE PLAN FOR LOCATION OF THIS ELEVATION
50	SEE PLAN FOR LOCATION OF THIS ELEVATION
51	SEE PLAN FOR LOCATION OF THIS ELEVATION
52	SEE PLAN FOR LOCATION OF THIS ELEVATION
53	SEE PLAN FOR LOCATION OF THIS ELEVATION
54	SEE PLAN FOR LOCATION OF THIS ELEVATION
55	SEE PLAN FOR LOCATION OF THIS ELEVATION
56	SEE PLAN FOR LOCATION OF THIS ELEVATION
57	SEE PLAN FOR LOCATION OF THIS ELEVATION
58	SEE PLAN FOR LOCATION OF THIS ELEVATION
59	SEE PLAN FOR LOCATION OF THIS ELEVATION
60	SEE PLAN FOR LOCATION OF THIS ELEVATION
61	SEE PLAN FOR LOCATION OF THIS ELEVATION
62	SEE PLAN FOR LOCATION OF THIS ELEVATION
63	SEE PLAN FOR LOCATION OF THIS ELEVATION
64	SEE PLAN FOR LOCATION OF THIS ELEVATION
65	SEE PLAN FOR LOCATION OF THIS ELEVATION
66	SEE PLAN FOR LOCATION OF THIS ELEVATION
67	SEE PLAN FOR LOCATION OF THIS ELEVATION
68	SEE PLAN FOR LOCATION OF THIS ELEVATION
69	SEE PLAN FOR LOCATION OF THIS ELEVATION
70	SEE PLAN FOR LOCATION OF THIS ELEVATION
71	SEE PLAN FOR LOCATION OF THIS ELEVATION
72	SEE PLAN FOR LOCATION OF THIS ELEVATION
73	SEE PLAN FOR LOCATION OF THIS ELEVATION
74	SEE PLAN FOR LOCATION OF THIS ELEVATION
75	SEE PLAN FOR LOCATION OF THIS ELEVATION
76	SEE PLAN FOR LOCATION OF THIS ELEVATION
77	SEE PLAN FOR LOCATION OF THIS ELEVATION
78	SEE PLAN FOR LOCATION OF THIS ELEVATION
79	SEE PLAN FOR LOCATION OF THIS ELEVATION
80	SEE PLAN FOR LOCATION OF THIS ELEVATION
81	SEE PLAN FOR LOCATION OF THIS ELEVATION
82	SEE PLAN FOR LOCATION OF THIS ELEVATION
83	SEE PLAN FOR LOCATION OF THIS ELEVATION
84	SEE PLAN FOR LOCATION OF THIS ELEVATION
85	SEE PLAN FOR LOCATION OF THIS ELEVATION
86	SEE PLAN FOR LOCATION OF THIS ELEVATION
87	SEE PLAN FOR LOCATION OF THIS ELEVATION
88	SEE PLAN FOR LOCATION OF THIS ELEVATION
89	SEE PLAN FOR LOCATION OF THIS ELEVATION
90	SEE PLAN FOR LOCATION OF THIS ELEVATION
91	SEE PLAN FOR LOCATION OF THIS ELEVATION
92	SEE PLAN FOR LOCATION OF THIS ELEVATION
93	SEE PLAN FOR LOCATION OF THIS ELEVATION
94	SEE PLAN FOR LOCATION OF THIS ELEVATION
95	SEE PLAN FOR LOCATION OF THIS ELEVATION
96	SEE PLAN FOR LOCATION OF THIS ELEVATION
97	SEE PLAN FOR LOCATION OF THIS ELEVATION
98	SEE PLAN FOR LOCATION OF THIS ELEVATION
99	SEE PLAN FOR LOCATION OF THIS ELEVATION
100	SEE PLAN FOR LOCATION OF THIS ELEVATION

1330 N PAULINA STREET

A2-2



09/14/2016

Alderman **Proco Joe Moreno**  
Ward # 01  
City of Chicago  
City Hall, Room 300  
121 North LaSalle Street  
Chicago, Illinois 60602

Re: An ordinance to use and maintain a portion of the public right-of-way for **one (1) planter(s)** for **1250 NORTH PAULINA CONDOMINIUM ASSOCIATION**, adjacent to the premises known as **1250 N. Paulina St.**

Dear Alderman **Proco Joe Moreno**:

The applicant referenced above has requested the use of the public right-of-way for a **planter(s)**. An ordinance has been prepared by the Department of Business Affairs and Consumer Protection – Small Business Center - Public Way Use Unit for presentation to the City Council. Because this request was made for properties located in your ward, as approved by you as per the attached, I respectfully request that you introduce the attached ordinance at the next City Council meeting.

If you have any questions regarding this ordinance, please contact Anthony Bertuca at (312) 744-5506.

**Department of Business Affairs and Consumer Protection**