



City of Chicago



Or2016-609

Office of the City Clerk

Document Tracking Sheet

Meeting Date:	11/1/2016
Sponsor(s):	Moreno (1)
Type:	Order
Title:	Issuance of permits for sign(s)/signboard(s) at 2536 N Elston Ave - 100 sq. ft.
Committee(s) Assignment:	Committee on Zoning, Landmarks and Building Standards

3

Committee on Buildings

(signs)

ORDERED, That the Commissioner of Buildings is hereby directed to issue a sign permit to: (Contractor's name and address)

PARYN-CLAUSO SIGN CO
165 TUBEWAY DR
CAROL STREAM IL

for the erection of a sign/signboard over 24 feet in height and/or over 100 square feet (in area of one face) at: (Business NAME & ADDRESS)

VALUE CITY FURNITURE
2536 N ELSTON AVE

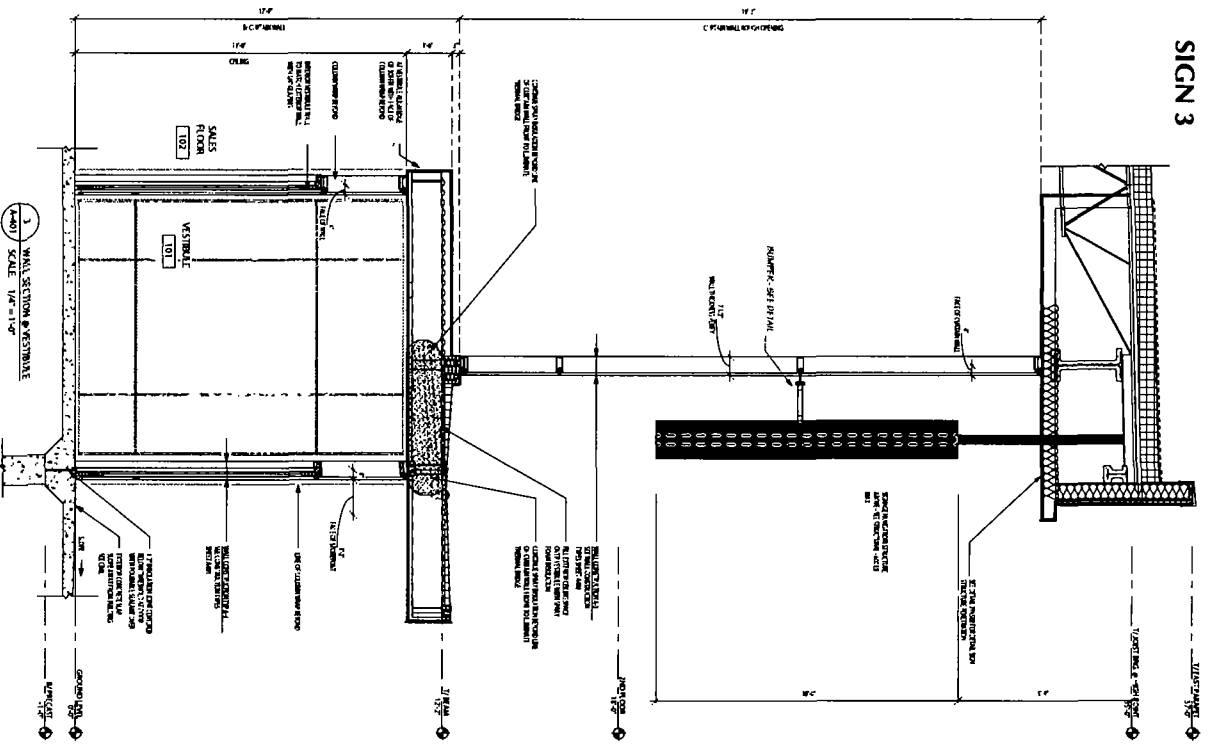
Dimensions: length 10' 0" height 10' 0"
height above grade/roof to top of sign 27'
TOTAL SQUARE FOOT AREA 100

Such sign(s) shall comply with all applicable provisions of TITLE 17 of the Chicago Zoning Ordinance and all other applicable provisions of the Municipal Code of the City of Chicago governing the construction and maintenance of outdoor signs, signboards and structures.

Joseph M. Mues
Alderman, Ward

155

SIGN 3



- (1) 10'-0" x 10'-0" Single Face Sign Cabinet with Channel Letters
- Logo Cabinet: Fabricated Aluminum Painted PMS 185 Red - Satin Finish
- VCF Graphics: Routed & Push-thru 1" White Acrylic
- Illumination: White LEDs / 60 Watt Power Supplies
- Power: (1) 15Amp @ 120Volts Electrical Circuit Run to Site by Others
- Bumper Bracket: (2) 2" x 2" Alum. Tubes Attached to (2) 3/4" x 8" x 1/2" Alum. Match Plates
- See Details on Page 3
- Mounting: (1) 6" (63/64" OD) Sch. 40 Steel Pipe w/ 3/4" Thick Mounting Plate
- See Details on Page 4



This sign is built to UL Standard for operation in North America. This Document is owned by and the information contained in it is proprietary to Parvin-Class Sign Company. By receipt hereof the holder agrees not to use the information, disclose it to any third party, nor reproduce this document without the prior written consent of Parvin-Class Sign Company. Holder also agrees to immediately return this document upon request of Parvin-Class Sign Company. © Copyright 2016 by Parvin-Class Sign Co

Parvin-Class SIGN COMPANY

Design • Fabrication • Installation • Maintenance
 1651AbbeyDrive•CrestlinStem•Illinois61838
 Tel:(630)-510-2020 • Fax:(630)-510-2024
 e-mail:info@parvinclass.com
 www.parvinclass.com

PROJECT:



Value City Furniture
 2536 N. Elston Avenue
 Chicago, IL

CUSTOMER APPROVAL:

DATE _____

AUTHORIZED SIGNATURE _____

REPRESENTATIVE Kish Mahadev

DRAWN BY Bill Marlow

DATE 7.21.16

SCALE 3/8" = 1'

SHEET NO. 1 of 4

WORK ORDER 75882

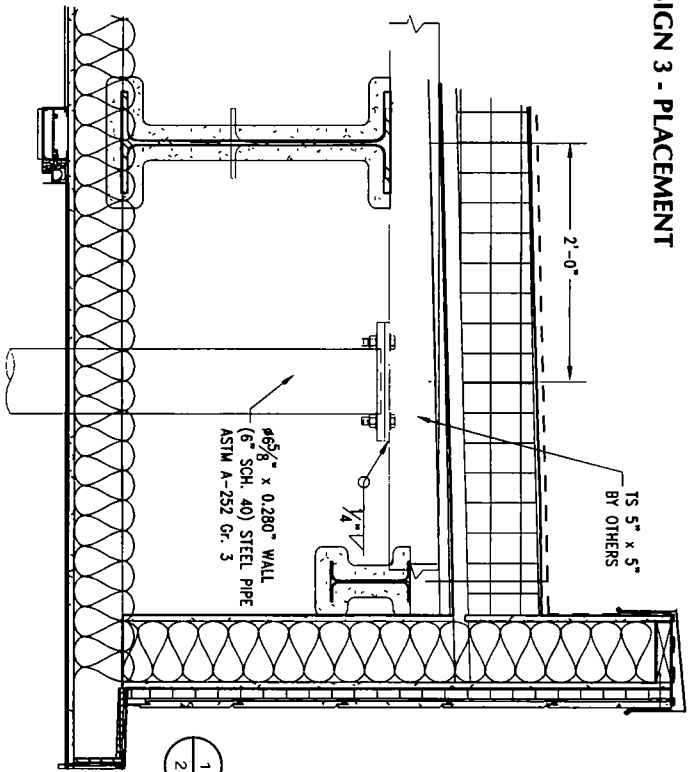
FILE NAME bcl75882

REVISIONS:

- 1 7.25.16 - mounting details
- 2 8.25.16 - mounting details
- 3 10.12.16 - mounting details
- 4
- 5
- 6
- 7
- 8

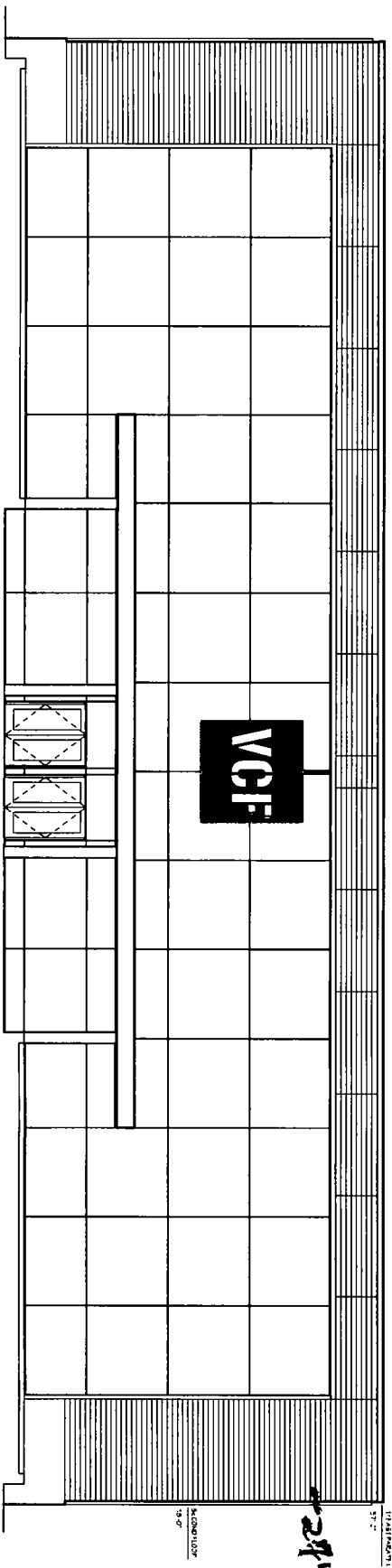
This sign is intended to be installed in accordance with the requirements of Article 600 of the National Electrical Code and/or other applicable local codes. This includes proper grounding and bonding of the sign.

SIGN 3 - PLACEMENT



1 MOUNTING DETAIL
SCALE 1" = 1'-0"

2 EAST ELEVATION
SCALE 3/32" = 1'-0"



This sign is built to UL Standard for operation in North America

This Document is owned by, and the information contained in it is proprietary to, Parvin-Class Sign Company. By receipt hereof, the holder agrees not to use the information, disclose it to any third party, nor reproduce this document without the prior written consent of Parvin-Class Sign Company. Holder also agrees to immediately return this document upon request of Parvin-Class Sign Company.

© Copyright 2016 by Parvin-Class Sign Co

Parvin-Class SIGN COMPANY

Design • Fabrication • Installation • Maintenance
1451Stonewy Drive • Camdenton, Illinois 61801
Tel: (618) 510-2020 • Fax: (618) 510-2024
E-mail: info@parvinclass.com
www.parvinclass.com

PROJECT:



Value City Furniture
2536 N. Elston Avenue
Chicago, IL

CUSTOMER APPROVAL:

DATE

AUTHORIZED SIGNATURE

REPRESENTATIVE

Kish Mahadev

DRAWN BY

Bill Marlow

DATE

7.21.16

SCALE

3/32" = 1'

SHEET NO.

2 of 4

WORK ORDER

75882

FILE NAME

bc75882

REVISIONS:

- 1 7.25.16 - mounting details
- 2 8.25.16 - mounting details
- 3 10.12.16 - mounting details
- 4
- 5
- 6
- 7
- 8

This sign is intended to be installed in accordance with the requirements of Article 600 of the National Electrical Code and/or other applicable local codes. This includes proper grounding and bonding of the sign.

