



# City of Chicago



Or2016-610

Office of the City Clerk

## Document Tracking Sheet

<b>Meeting Date:</b>	11/1/2016
<b>Sponsor(s):</b>	Moreno (1)
<b>Type:</b>	Order
<b>Title:</b>	Issuance of permits for sign(s)/signboard(s) at 2536 N Elston Ave - 189 sq. ft.
<b>Committee(s) Assignment:</b>	Committee on Zoning, Landmarks and Building Standards

# 4

Committee on Buildings

(signs)

ORDERED, That the Commissioner of Buildings is hereby directed to  
issue a sign permit to: (Contractor's name and address)

PARYN-CLAUSE SIGNS

165 TUBEWAY DR

CORR STREAM IL

for the erection of a sign/signboard over 24 feet in height and/or over  
100 square feet (in area of one face) at: (Business NAME & ADDRESS)

VALUE CITY FURNITURE

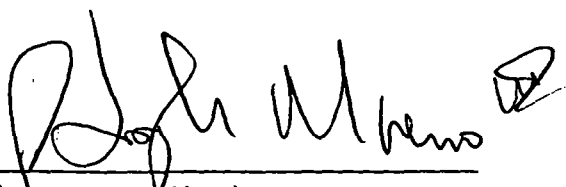
2536 N ELSTON AVE

Dimensions: length 38' 6" height 4' 11"

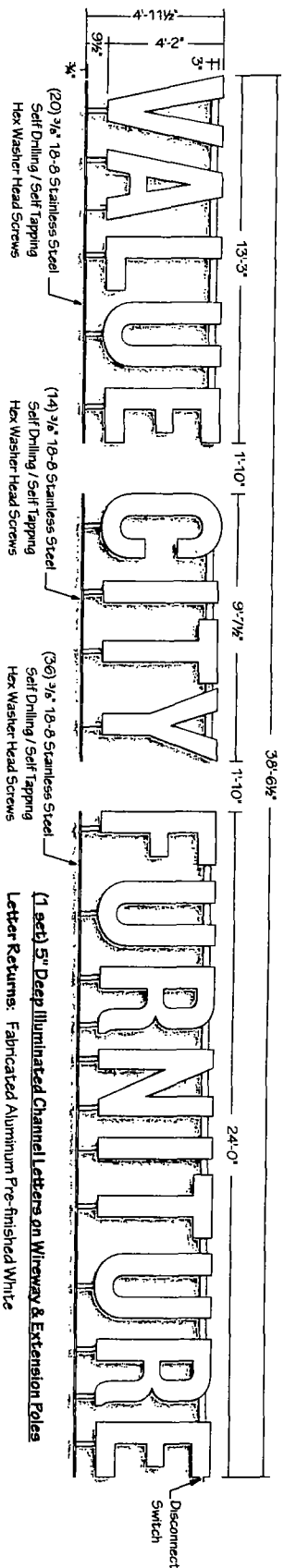
height above grade/roof to top of sign 20'

TOTAL SQUARE FOOT AREA 189

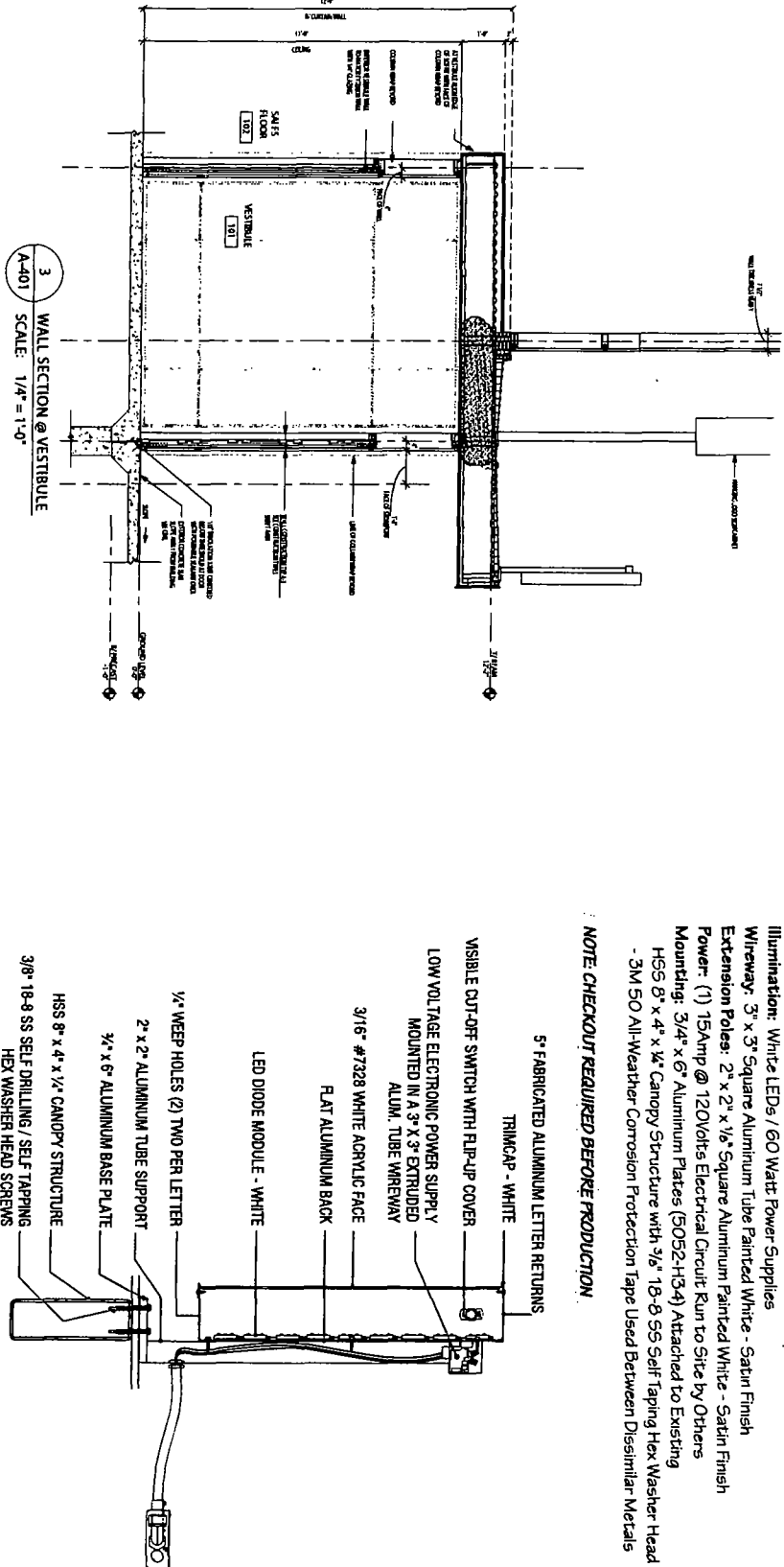
Such sign(s) shall comply with all applicable provisions of TITLE  
17 of the Chicago Zoning Ordinance and all other applicable provisions  
of the Municipal Code of the City of Chicago governing the construction  
and maintenance of outdoor signs, signboards and structures.

 135  
Alderman, Ward

# SIGN 4



## NOTE: CHECKOUT REQUIRED BEFORE PRODUCTION



## Parvin-Claus

SIGN COMPANY

14350 W. 110th St. - Suite 100 - Overland Park, KS 66213  
Tel: 913.510.1020 • Fax: 913.510.2024  
Email: info@parvinclaus.com  
www.parcinc.com

### PROJECT:

**UILTECH**

Value City Furniture  
2536 N. Elston Avenue  
Chicago, IL

### CUSTOMER APPROVAL:

DATE

### AUTHORIZED SIGNATURE

### REPRESENTATIVE

Kish Mahadev

DRAWN BY Bill Marlow

DATE

7/21/16

SCALE

1/4" = 1'

SHEET NO.

1 of 2

WORK ORDER

75003

FILE NAME

bc75003

### REVISIONS:

1 7/25/16 - mounting details

2 8/12/16 - mounting details

3 8/25/16 - placement

4

5

6

7

8

9

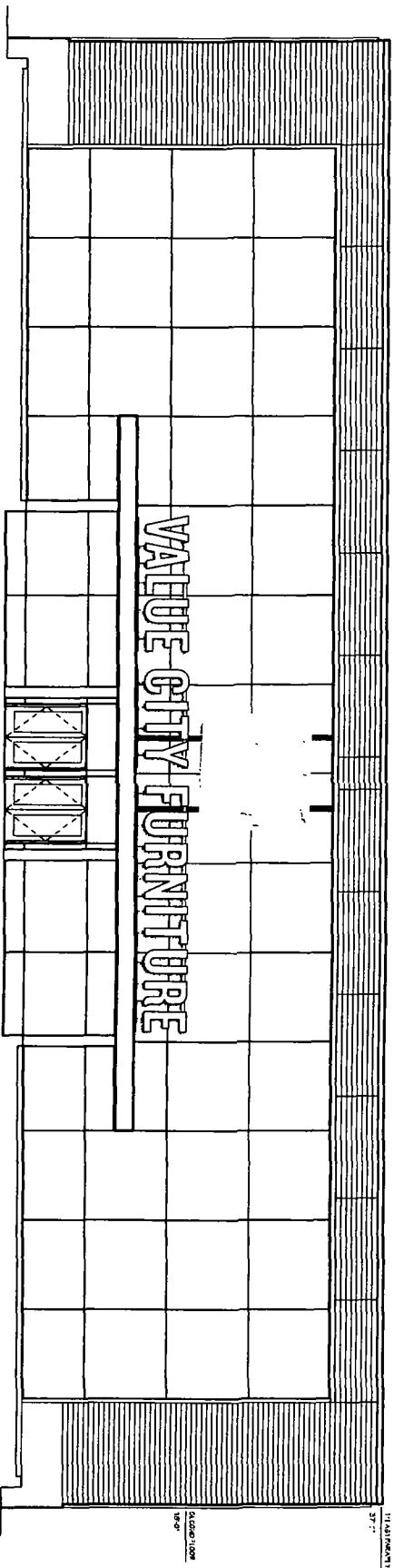
This sign is intended to be installed in accordance with the requirements of Article 600 of the National Electrical Code and/or other applicable local codes. This includes proper grounding and bonding of the sign.

This sign is built in 1/16" Stainless Steel for operation in cold climates.

This Document is owned by, and the information contained in it is proprietary to, Parvin-Claus Sign Company. By receipt hereof the holder agrees not to use the information, disclose it to any third party, nor reproduce this document without the prior written consent of Parvin-Claus Sign Company. Holder also agrees to immediately return this document upon request of Parvin-Claus Sign Company.

© Copyright 2016 by Parvin-Claus Sign Co

# SIGN 4 - PLACEMENT



2 EAST ELEVATION  
A-201 SCALE 3/32" = 1'-0"



This sign is built to IT Standards for operation in North America.

\*This Document is owned by, and the information contained in it is proprietary to, Parvin-Clausen Sign Company. By receipt thereof the holder agrees not to use the information, disclose it to any third party, nor reproduce this document without the prior written consent of Parvin-Clausen Sign Company. Holder also agrees to immediately return this document upon request of Parvin-Clausen Sign Company.

© Copyright 2016 by Parvin-Clausen Sign Co

## Parvin-Clausen SIGN COMPANY

Design • Fabrication • Installation • Maintenance  
1831 Lakeview Drive • Carol Stream, Illinois 60188  
Tel: (630) 510-2020 • Fax: (630) 510-2024  
e-mail: info@parvinclausen.com  
www.parvinclausen.com

### PROJECT:



Value City Furniture  
2536 N. Elston Avenue  
Chicago, IL

### CUSTOMER APPROVAL:

DATE

### AUTHORIZED SIGNATURE

### REPRESENTATIVE

Kish Mahadev

### DRAWN BY

Bill Marlow

### DATE

7/21/16

### SCALE

3/32" = 1'

### SHEET NO.

2 of 2

### WORK ORDER

75003

### FILE NAME

bci75003

### REVISIONS:

1 7/25/16 - mounting details

2 8/12/16 - mounting details

3 8/25/16 - placement

4

5

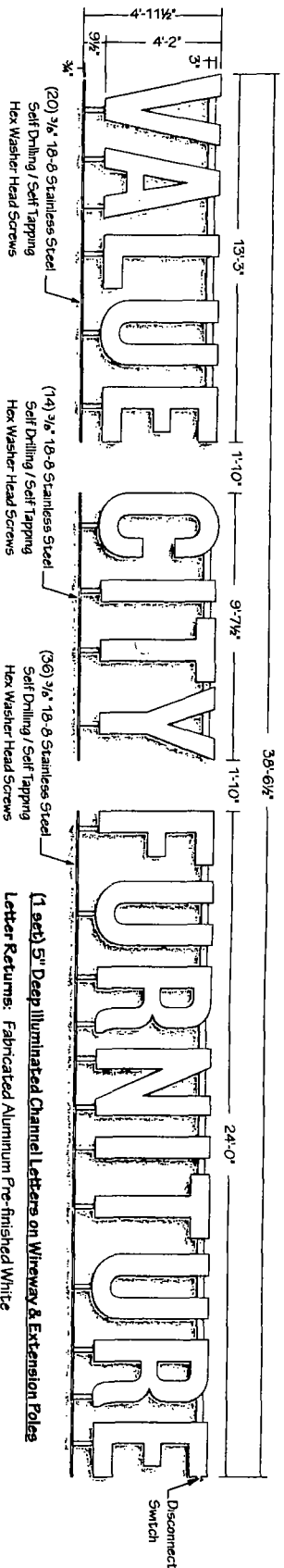
6

7

8

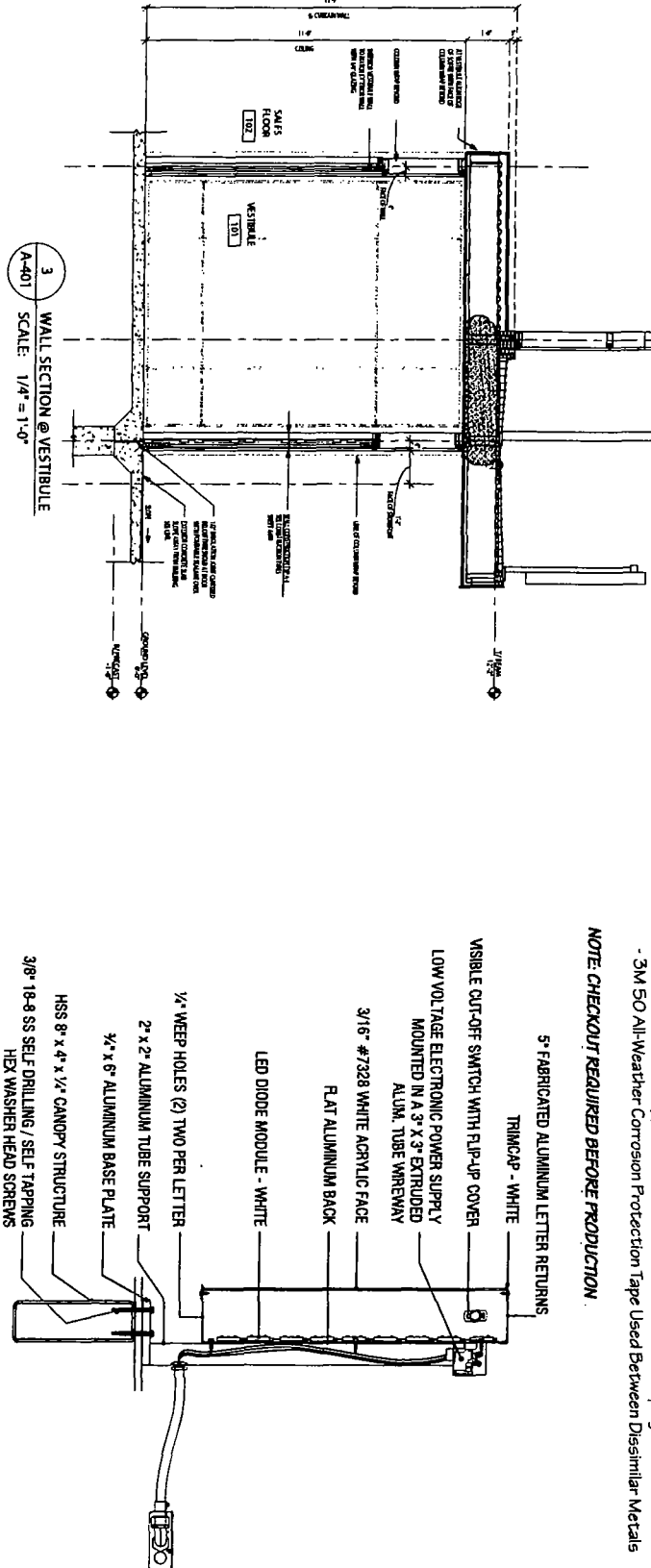
This sign is intended to be installed in accordance with the requirements of Article 600 of the National Electrical Code and/or other applicable local codes. This includes proper grounding and bonding of the sign.

# SIGN 4



**(1 set) 5" Deep Illuminated Channel Letters on Wireway & Extension Poles**  
**Letter Returns:** Fabricated Aluminum Pre-finished White  
**Letter Faces:** #7328 White Acrylic w/ 3/4" White Trimcap  
**Illumination:** White LEDs / 60 Watt Power Supplies  
**Wireway:** 3" x 3" Square Aluminum Tube Painted White - Satin Finish  
**Extension Poles:** 2" x 2" x 1/2" Square Aluminum Painted White - Satin Finish  
**Power:** (1) 15Amp @ 120Volts Electrical Circuit Run to Site by Others  
**Mounting:** 3/4" x 6" Aluminum Plates (5052-H34) Attached to Existing  
 HCS 8" x 4" x 1/4" Canopy Structure with 3/8" 18-8 SS Self Tapping Hex Washer Head Screws  
 - 3M 50 All-Weather Corrosion Protection Tape Used Between Dissimilar Metals

**NOTE: CHECKOUT REQUIRED BEFORE PRODUCTION**



**3 WALL SECTION @ VESTIBULE**  
 SCALE: 1/4" = 1'-0"

This sign is built in U.S. Standard for operation in North America

This Document is owned by and the information contained in it is proprietary to Parvin-Clauss Sign Company. By receipt hereof the holder agrees not to use the information, disclose it to any third party, nor reproduce this document without the prior written consent of Parvin-Clauss Sign Company. Holder also agrees to immediately return this document upon request of Parvin-Clauss Sign Company.

© Copyright 2016 by Parvin-Clauss Sign Co

**Parvin-Clauss**  
 SIGN COMPANY

Design • Fabrication • Installation • Maintenance  
 15510 West 10th Avenue • Suite 100 • Aurora, CO 80018  
 Tel: 303-210-2020 • Fax: 303-510-2024  
 e-mail: info@parvinclauss.com  
 www.parvinclauss.com

**PROJECT:**

**BUILTECH**

Value City Furniture  
 2536 N. Elston Avenue  
 Chicago, IL

**CUSTOMER APPROVAL:**

**DATE**

**AUTHORIZED SIGNATURE**

**REPRESENTATIVE**

**DRAWN BY**

**DATE**

**SCALE**

**SHEET NO.**

**WORK ORDER**

**FILE NAME**

**REVISIONS:**

1 725 16 - mounting details

2 812 16 - mounting details

3 8 25 16 - placement

4

5

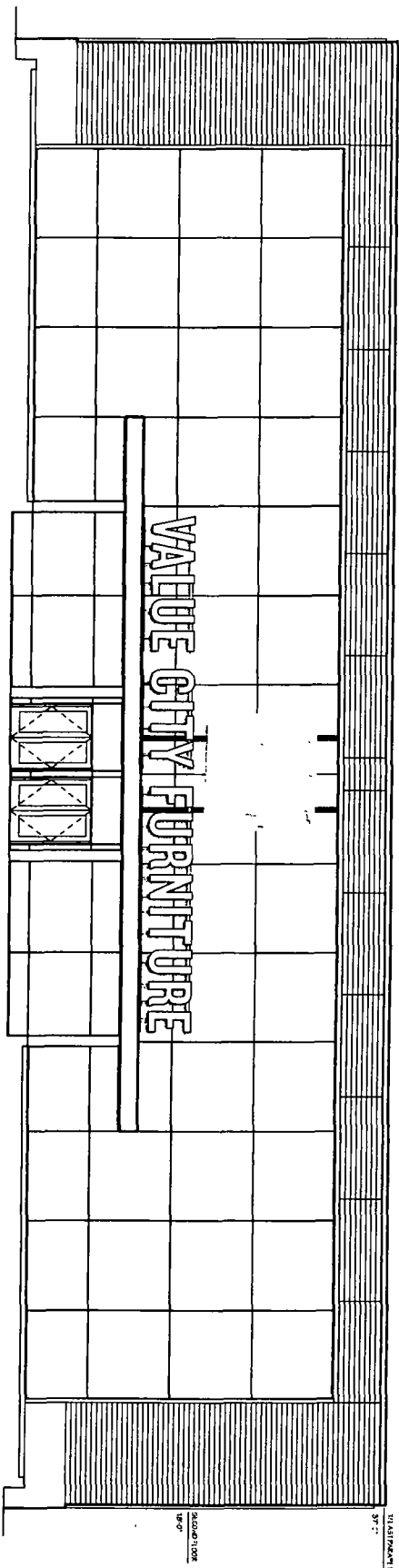
6

7

8

This sign is intended to be installed in accordance with the requirements of Article 600 of the National Electrical Code and/or other applicable local codes. This includes proper grounding and bonding of the sign.

SIGN 4 - PLACEMENT



2 EAST ELEVATION  
A-201 SCALE 3/32" = 1'-0"



This sign is built to 11' Standard  
for operation in North America

This Document is owned by, and the information contained in it is proprietary to, Parvin-Claus Sign Company. By receipt hereof the holder agrees not to use the information, disclose it to any third party,  
not reproduce this document without the prior written consent of Parvin-Claus Sign Company. Holder also agrees to immediately return this document upon request of Parvin-Claus Sign Company.

© Copyright 2016 by Parvin-Claus Sign Co.

**Parvin-Claus**  
SIGN COMPANY

Design • Fabrication • Installation • Maintenance  
15175bwyDrive-CrookstreamIllinois60188  
Tel: (630) 510-2020 • Fax: (630) 510-2074  
e-mail: [signs@parvinclaus.com](mailto:signs@parvinclaus.com)  
[www.parvinclaus.com](http://www.parvinclaus.com)

**PROJECT:**



Value City Furniture  
2536 N. Elston Avenue  
Chicago, IL

**CUSTOMER APPROVAL:**

DATE

**AUTHORIZED SIGNATURE**

**REPRESENTATIVE**

Kish Mahadev

**DRAWN BY**

Bill Marlow

**DATE**

7/21/16

**SCALE**

3/32" = 1'

**SHEET NO.**

2 of 2

**WORK ORDER**

75683

**FILE NAME**

bc/75683

**REVISIONS:**

1 7/25/16 - mounting details

2 8/12/16 - mounting details

3 8/25/16 - placement

4

5

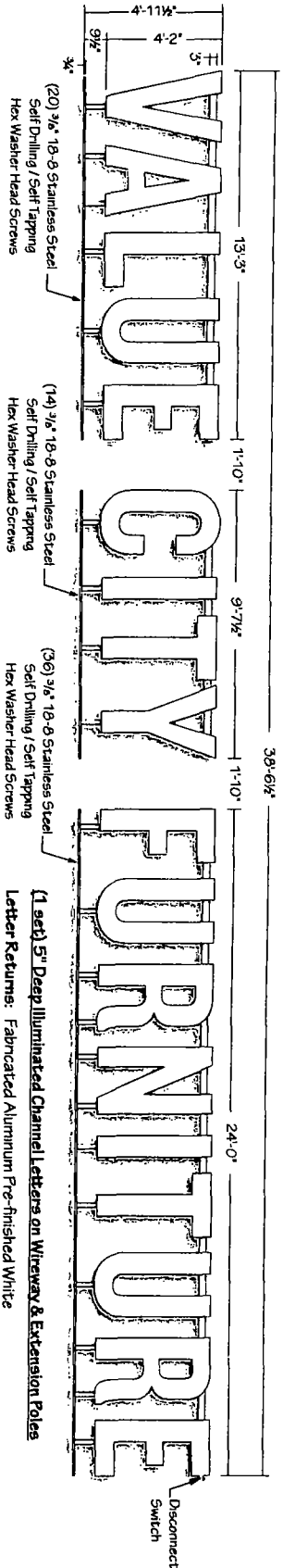
6

7

8

This sign is intended to be installed  
in accordance with the  
requirements of Article 600 of the  
National Electrical Code and/or  
other applicable local codes. This  
includes proper grounding and  
bonding of the sign.

# SIGN 4



**(1 set) 5" Deep Illuminated Channel Letters on Wireway & Extension Poles**

**Letter Returns:** Fabricated Aluminum Pre-finished White

**Letter Faces:** #7328 White Acrylic w/ 3/4" White Trimcap

**Illumination:** White LEDs / 60 Watt Power Supplies

**Wireway:** 3" x 3" Square Aluminum Tube Painted White - Satin Finish

**Extension Poles:** 2" x 2" x 1/8" Square Aluminum Painted White - Satin Finish

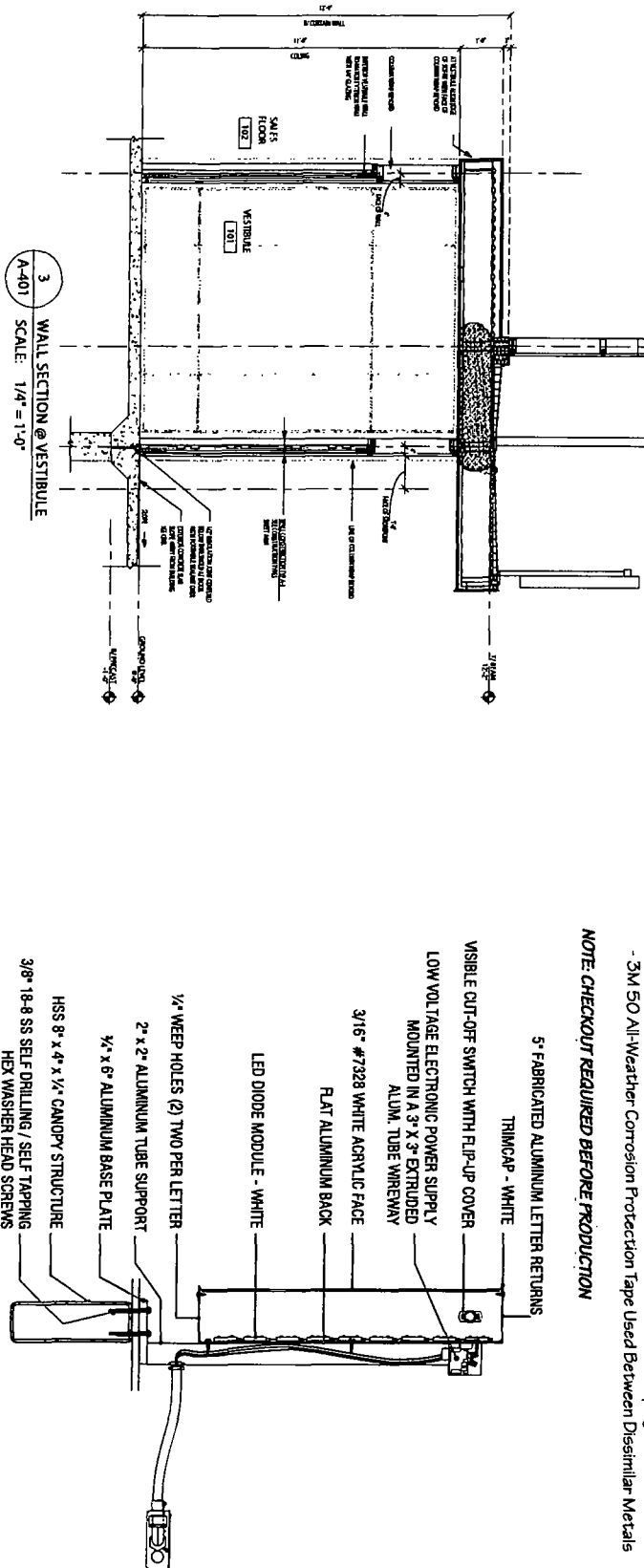
**Power:** (1) 15Amp @ 120Volts Electrical Circuit Run to Site by Others

**Mounting:** 3/4" x 6" Aluminum Plates (5052-H34) Attached to Existing

HSS 8" x 4" x 1/4" Canopy Structure with 3/8" 18-8 SS Self Tapping Hex Washer Head Screws

- 3M 50 All-Weather Corrosion Protection Tape Used Between Dissimilar Metals

**NOTE: CHECKOUT REQUIRED BEFORE PRODUCTION**



This sign is built in U.S. Standard  
for operation in North America.

This Document is owned by, and the information contained in it is proprietary to, Parvin-Claus Sign Company. By receipt hereof the holder agrees to use the information, discloses it to any third party,  
not reproduce this document without the prior written consent of Parvin-Claus Sign Company. Holder also agrees to immediately return this document upon request of Parvin-Claus Sign Company.

© Copyright 2016 by Parvin-Claus Sign Co

## Parvin-Claus SIGN COMPANY

Design • Fabrication • Installation • Maintenance  
151 Lakeview Drive • Collinsville • Illinois 61801  
Tel: (618) 510-2020 • Fax: (618) 510-2024  
e-mail: info@parvinclaus.com  
www.parvinclaus.com

### PROJECT:



Value City Furniture  
2536 N. Elston Avenue  
Chicago, IL

### CUSTOMER APPROVAL:

DATE

### AUTHORIZED SIGNATURE

REPRESENTATIVE

Kish Mahadev

DRAWN BY

Bill Marlow

DATE

7.21.16

SCALE

1/4" = 1'

SHEET NO.

1 of 2

WORK ORDER

75883

FILE NAME

bci/75883

### REVISIONS:

1 7.25.16 - mounting details

2 8.12.16 - mounting details

3 8.25.16 - placement

4

5

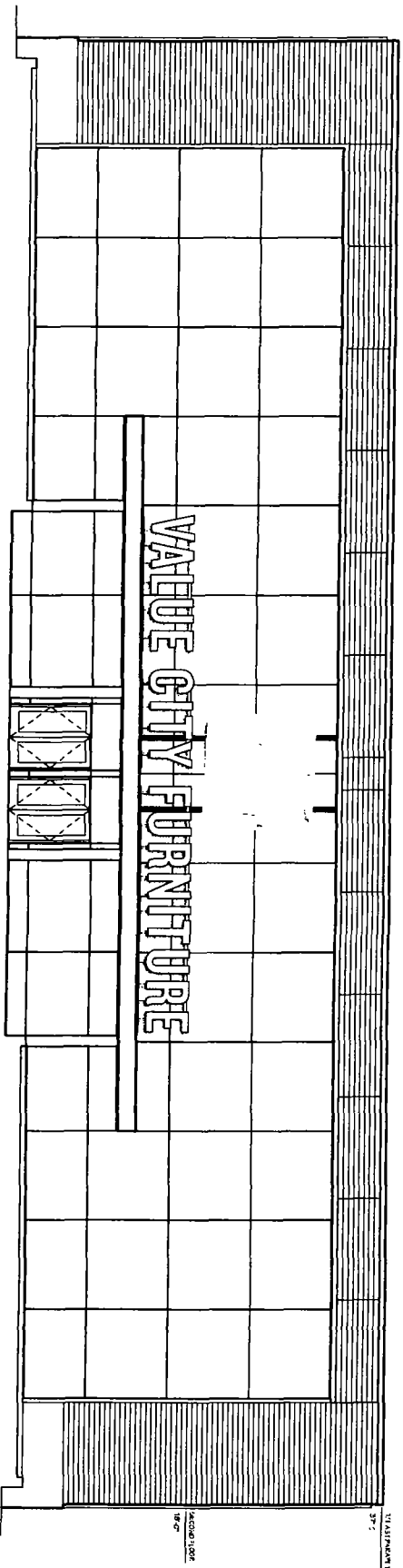
6

7

8

This sign is intended to be installed  
in accordance with the  
requirements of Article 600 of the  
National Electrical Code and/or  
other applicable local codes. This  
includes proper grounding and  
bonding of the sign.

SIGN 4 - PLACEMENT



2 EAST ELEVATION  
A-201 SCALE 3/32" = 1'-0"



This sign is built to U.S. Standards for operation in North America

This Document is owned by, and the information contained in it is proprietary to, Parvin-Claus Sign Company. By receipt hereof the holder agrees not to use the information, disclose it to any third party, nor reproduce this document without the prior written consent of Parvin-Claus Sign Company. Holder also agrees to immediately return this document upon request of Parvin-Claus Sign Company.

© Copyright 2016 by Parvin-Claus Sign Co

**Parvin-Claus**  
SIGN COMPANY

Design • Fabrication • Installation • Maintenance  
14515 Oakwood Drive • Carol Stream, Illinois 60138  
Tel: 630-510-2020 • Fax: 630-510-2024  
E-mail: info@parvinclaus.com  
www.parvinclaus.com

**PROJECT:**



Value City Furniture  
2536 N. Elston Avenue  
Chicago, IL

**CUSTOMER APPROVAL:**

DATE

AUTHORIZED SIGNATURE

REPRESENTATIVE

Kish Mahadev

DRAWN BY

Bill Marlow

DATE

7.2.1.16

SCALE

3/32" = 1'

SHEET NO.

2 of 2

WORK ORDER

75883

FILE NAME

bci75883

**REVISIONS:**

1 7.25.16 - mounting details

2 8.12.16 - mounting details

3 8.25.16 - placement

4

5

6

7

8

This sign is intended to be installed in accordance with the requirements of Article 600 of the National Electrical Code and/or other applicable local codes. This includes proper grounding and bonding of the sign.