



City of Chicago



Or2016-611

Office of the City Clerk

Document Tracking Sheet

Meeting Date:	11/1/2016
Sponsor(s):	Moreno (1)
Type:	Order
Title:	Issuance of permits for sign(s)/signboard(s) at 2536 N Elston Ave - 702 sq. ft.
Committee(s) Assignment:	Committee on Zoning, Landmarks and Building Standards

#5

Committee on Buildings

(signs)

ORDERED, That the Commissioner of Buildings is hereby directed to
issue a sign permit to: (Contractor's name and address)

PARRYIN-CLAUSS SIGN CO

165 TUBEWAY DR

CAROL STREAM IL

for the erection of a sign/signboard over 24 feet in height and/or over
100 square feet (in area of one face) at: (Business NAME & ADDRESS)

VALUE CITY FURNITURE

2536 N ELSTON AVE

Dimensions: length 50' 2" height 14'

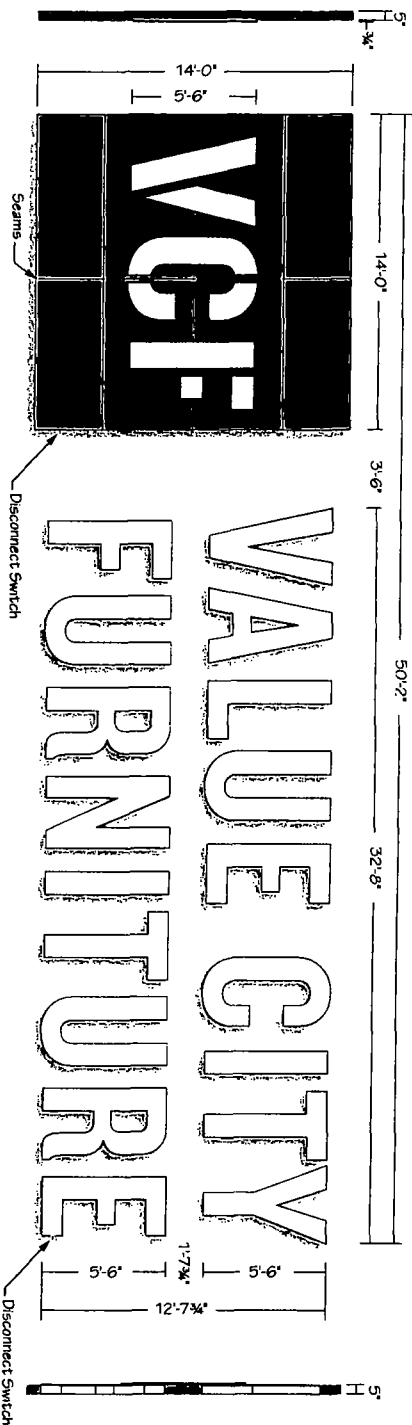
height above grade/roof to top of sign 42'

TOTAL SQUARE FOOT AREA 702

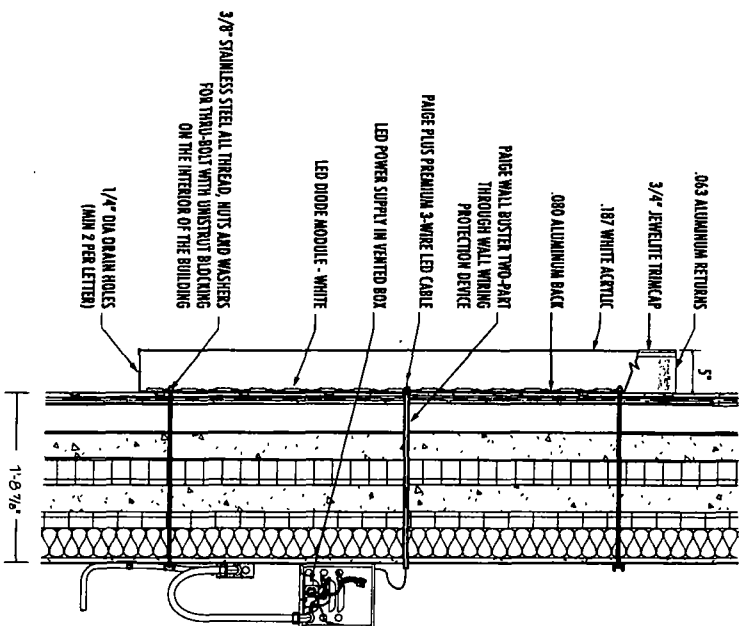
Such sign(s) shall comply with all applicable provisions of TITLE
17 of the Chicago Zoning Ordinance and all other applicable provisions
of the Municipal Code of the City of Chicago governing the construction
and maintenance of outdoor signs, signboards and structures.

Joseph M. Anderson
Anderson, Ward

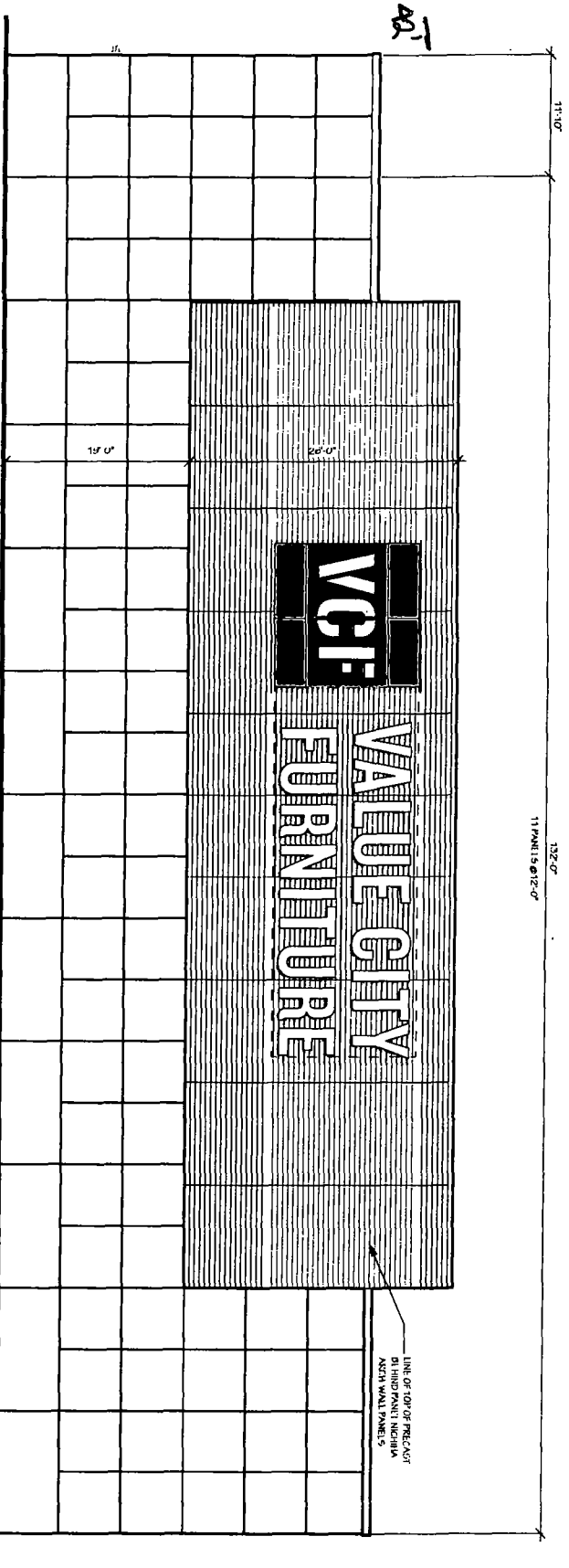
155



(D) 14'-0" x 14'-0" x 5" Logo Cabinet & Channel Letters on Wall
Logo Cabinet: 5" Deep Fabricated Aluminum Painted PMS 165 Red - Satin Finish
VCF Graphics: Routed & Push-thru 1" White Acrylic
Letter Returns: Fabricated Aluminum Pre-finished White
Letter Faces: #7328 White Acrylic Faces Wt 3/4" White Trimcap
Illumination: White LEDs / 60 Watt Power Supplies
Power: (2) 15Amp @ 120Volts Electrical Circuit Run to Site by Others
Mounting: Flush to Niche/na Arch. Wall Panels - 3/8" Stainless Steel All Thread,
Nuts and Washers for Trim-bolt with Unistrut Blocking on the interior of the Building



SIGN 5 - PLACEMENT



2 WEST ELEVATION
A-202 SCALE 3/32" = 1'-0"



This sign is built to I.T. Standards for operation in North America.

This Document is owned by, and the information contained in it is proprietary to, Parvin-Clauss Sign Company. By receipt hereof the holder agrees not to use the information, disclose it to any third party, nor reproduce this document without the prior written consent of Parvin-Clauss Sign Company. Holder also agrees to immediately return this document upon request of Parvin-Clauss Sign Company.

© Copyright 2016 by Parvin-Clauss Sign Co.

Parvin-Clauss SIGN COMPANY

Design • Fabrication • Installation • Maintenance
1650 Maple Drive • East Stream, Illinois 60138
Tel: 630.510.2020 • Fax: 630.510.2074
e-mail: info@parvinclauss.com
www.parvinclauss.com

PROJECT:



Value City Furniture
2536 N. Elston Avenue
Chicago, IL

CUSTOMER APPROVAL:

DATE

AUTHORIZED SIGNATURE

REPRESENTATIVE

Kish Mahadev

DRAWN BY

Bill Marlow

DATE

7.21.16

SCALE

3/32" = 1'

SHEET NO.

2 of 2

WORK ORDER

75884

FILE NAME

bcl75884

REVISIONS:

1 7.25.16

2 8.12.16

3

4

5

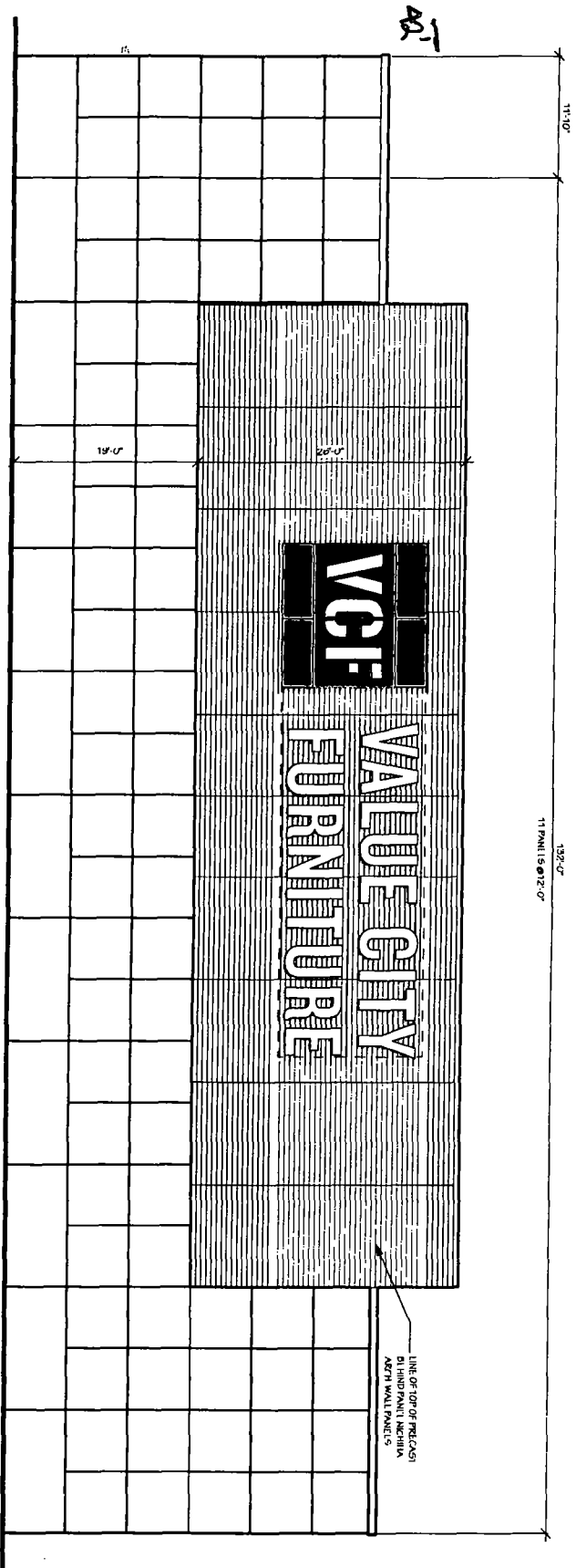
6

7

8

This sign is intended to be installed in accordance with the requirements of Article 600 of the National Electrical Code and/or other applicable local codes. This includes proper grounding and bonding of the sign.

SIGN 5 - PLACEMENT



2 WEST ELEVATION
A-202 SCALE 3/32" = 1'-0"



This sign is built to I.T. Standards for operation in North America

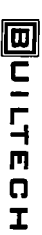
*This Document is owned by, and the information contained in it is proprietary to, Parvin-Claus Sign Company. By receipt hereof the holder agrees not to use the information, disclose it to any third party, nor reproduce this document without the prior written consent of Parvin-Claus Sign Company. Holder also agrees to immediately return this document upon request of Parvin-Claus Sign Company.

© Copyright 2016 by Parvin-Claus Sign Co.

Parvin-Claus SIGN COMPANY

Design • Fabrication • Installation • Maintenance
16510bearyDrive • Crystal Lake, IL 60154
Tel: 815-310-2020 • Fax: 815-310-2074
e-mail: info@parvinclaus.com
www.parvinclaus.com

PROJECT:



Value City Furniture
2536 N. Elston Avenue
Chicago, IL

CUSTOMER APPROVAL:

DATE

AUTHORIZED SIGNATURE

REPRESENTATIVE

Kish Mahadev

DRAWN BY

Bill Marlow

DATE

7/21/16

SCALE

3/32" = 1'

SHEET NO.

2 of 2

WORK ORDER

75884

FILE NAME

bci75884

REVISIONS:

1 7/23/16

2 8/12/16

3

4

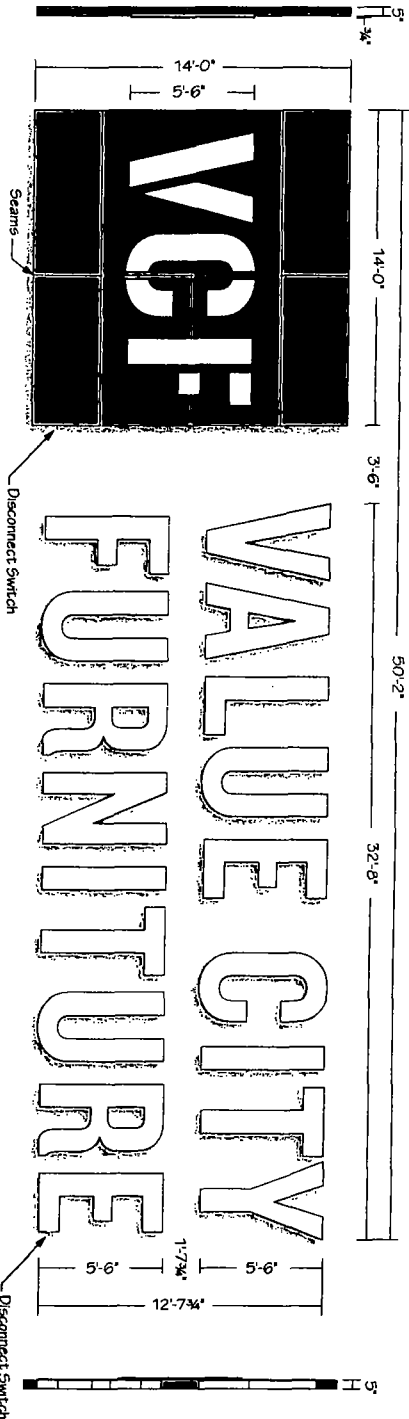
5

6

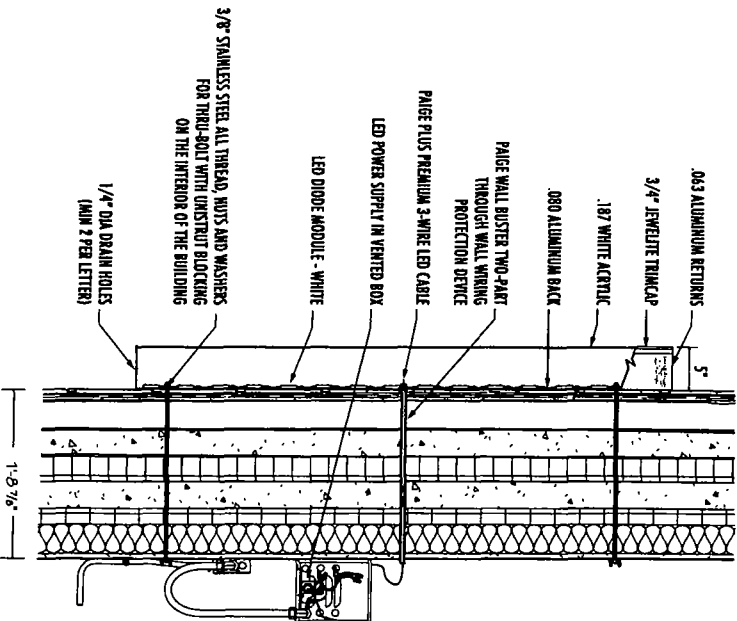
7

8

This sign is intended to be installed in accordance with the requirements of Article 600 of the National Electrical Code and/or other applicable local codes that includes proper grounding and bonding of the sign.



- (1) 14'-0" x 14'-0" x 5" Logo Cabinet & Channel Letters on Wall
- Logo Cabinet: 5" Deep Fabricated Aluminum Painted PMS 185 Red - Satin Finish
- VCF Graphics: Routed & Push-thru 1" White Acrylic
- Letter Returns: Fabricated Aluminum Pre-finished White
- Letter Faces: #7328 White Acrylic Faces w/ 3/4" White Trincap
- Illumination: White LEDs / 60 Watt Power Supplies
- Power: (2) 15Amp @ 120Volts Electrical Circuit Run to Site by Others
- Mounting: Flush to Nichia Arch. Wall Panels - 3/8" Stainless Steel All Thread.
- Nuts and Washers for Thru-bolt with Unistrut Blocking on the Interior of the Building
- NOTE: UNION INSTALL**



This sign is built in IL. Standards for operation in North America

This Document is owned by, and the information contained in it is proprietary to, Parvin-Clauss Sign Company. By receipt hereof the holder agrees not to use the information, disclose it to any third party, nor reproduce this document without the prior written consent of Parvin-Clauss Sign Company. Holder also agrees to immediately return this document upon request of Parvin-Clauss Sign Company.

© Copyright 2016 by Parvin-Clauss Sign Co.

Parvin-Clauss SIGN COMPANY

Design • Fabrication • Installation • Maintenance
15515 Highway 100, Suite 100, Chicago, IL 60641
Tel: (773) 510-2020 • Fax: (773) 510-2024
Email: info@parvinclauss.com
www.parvinclauss.com

PROJECT:



Value City Furniture
2536 N. Elston Avenue
Chicago, IL

CUSTOMER APPROVAL:

DATE

AUTHORIZED SIGNATURE

REPRESENTATIVE

Kish Mahadev

DRAWN BY

Bill Marlow

DATE

7.21.16

SCALE

3/16" = 1'

SHEET NO.

1 of 2

WORK ORDER

75884

FILE NAME

bci75884

REVISIONS:

1 7.25.16 - mounting detail

2 8.12.16 - mounting detail

3

4

5

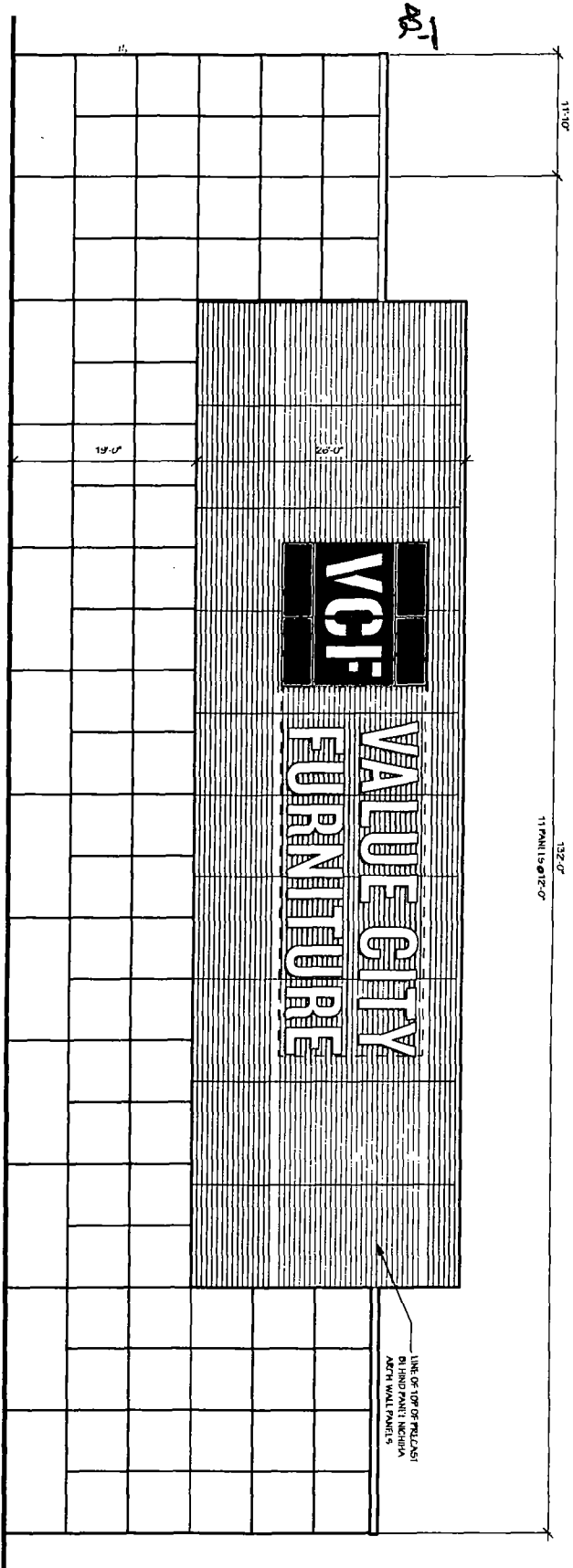
6

7

8

This sign is intended to be installed in accordance with the requirements of Article 600 of the National Electrical Code and/or other applicable local codes. This includes proper grounding and bonding of the sign.

SIGN 5 - PLACEMENT



2 WEST ELEVATION
A-202 SCALE 3/32" = 1'-0"



This sign is built to I.T. Standards for operation in North America.

This Document is owned by, and the information contained in it is proprietary to, Parvin-Claus Sign Company. By receipt thereof the holder agrees not to use the information, disclose it to any third party, nor reproduce this document without the prior written consent of Parvin-Claus Sign Company. Holder also agrees to immediately return this document upon request of Parvin-Claus Sign Company.

© Copyright 2016 by Parvin-Claus Sign Co

Parvin-Claus
SIGN COMPANY

Design • Fabrication • Installation • Maintenance
16510eBayDrive • CarolStream, Illinois 61818
Tel: 630.510.2020 • Fax: 630.510.2024
e-mail: info@parvinclaus.com
www.parvinclaus.com

PROJECT:



Value City Furniture
2536 N. Elston Avenue
Chicago, IL

CUSTOMER APPROVAL:

DATE

AUTHORIZED SIGNATURE

REPRESENTATIVE

Drawn by Kish Mahadev

DATE Bill Marlow

SCALE 7/21/16

SHEET NO. 3/32" = 1'

WORK ORDER 2 of 2

FILE NAME 75084

bc175084

REVISIONS:

1 7/25/16

2 3/12/16

3

4

5

6

7

8

This sign is intended to be installed in accordance with the requirements of Article 600 of the National Electrical Code and/or other applicable local codes. This includes proper grounding and bonding of the sign.