



# City of Chicago



O2017-2192

Office of the City Clerk

## Document Tracking Sheet

<b>Meeting Date:</b>	3/29/2017
<b>Sponsor(s):</b>	Misc. Transmittal
<b>Type:</b>	Ordinance
<b>Title:</b>	Zoning Reclassification Map No. 6-F at 600 W 26th St - App No. 19161T1
<b>Committee(s) Assignment:</b>	Committee on Zoning, Landmarks and Building Standards

#1916171

INTRODUCED

MARCH 29, 2017

ORDINANCE

BE IT ORDAINED BY THE CITY COUNCIL OF THE CITY OF CHICAGO:

SECTION 1. Title 17 of the Municipal Code of Chicago, the Chicago Zoning Ordinance, is hereby amended by changing all of the RT-4 Residential Two-Flat, Townhouse and Multi Unit District symbols and indications as shown on Map No. 6-F in an area bound by

A line twenty five feet West of and parallel to south Wallace Street, the alley next North of and parallel to West 26<sup>th</sup> Street, South Wallace Street, West 26<sup>th</sup> Street.

to those of a B1-2 Neighborhood Shopping District.

SECTION 2. This ordinance takes effect after its passage and due publication.

Common Address of Property: 600 W 26<sup>th</sup> Street, Chicago, IL 60616.

**NARRATIVE**

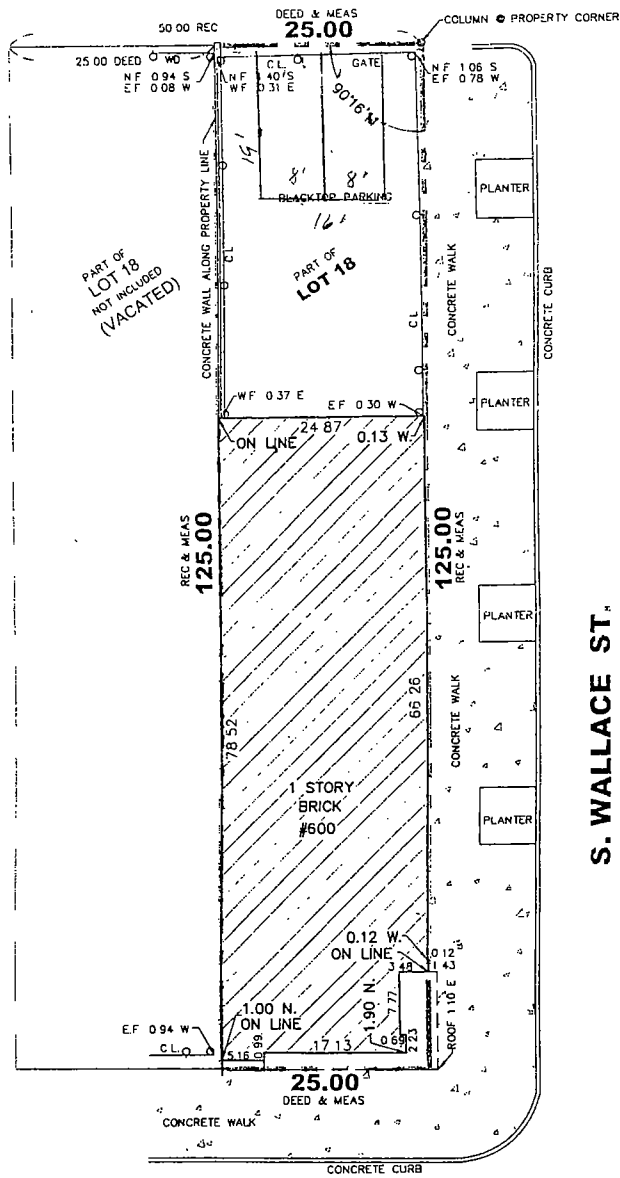
**600 W 26<sup>th</sup> Street – RT-4 to B1-2**

In order to allow open restaurant in an existing 1 story building with no new construction.

FAR	1952
Lot Area	3125 square feet
Building Area	3125
Building Height	11 feet
Front Setback	0
Rear Setback	4648 square feet
West side Setback	0
East side Setback	0
Parking	2 spaces

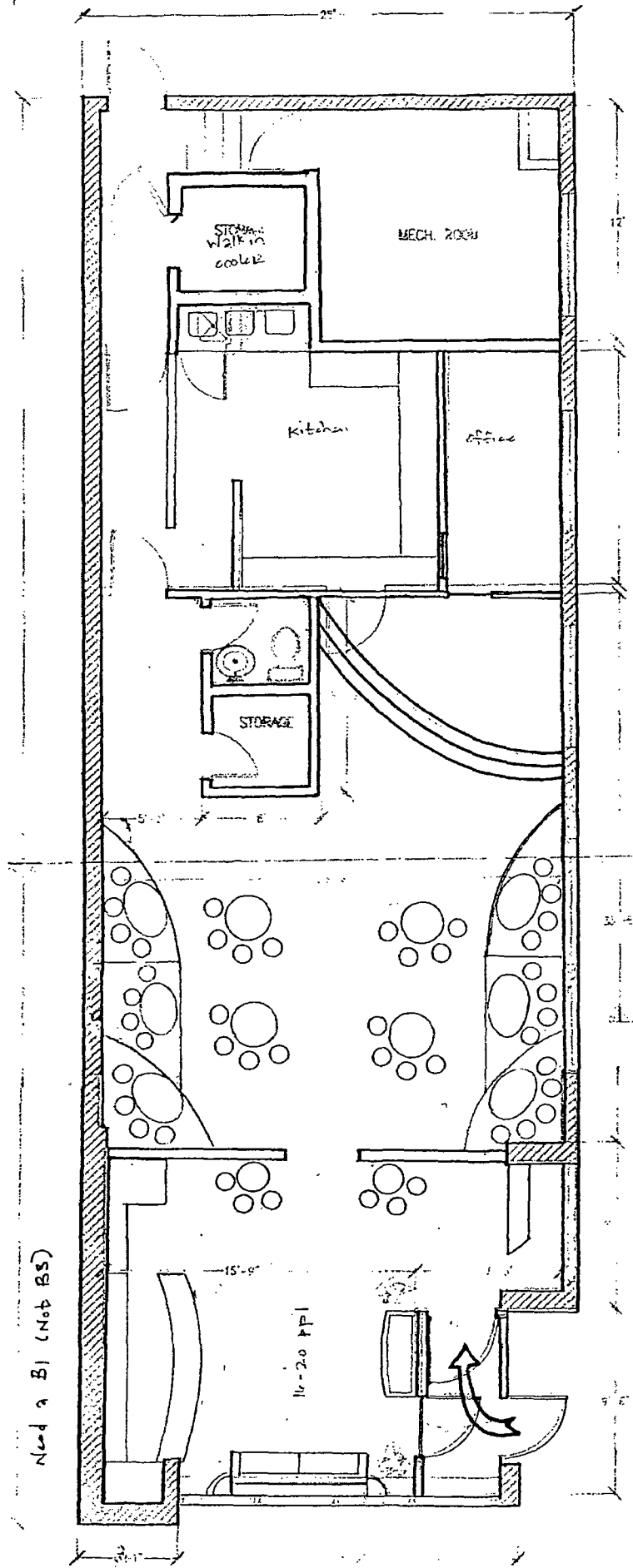
**FINAL FOR PUBLICATION**

## SITE PLAN



**W. 26TH. ST.**

FINAL FOR PUBLICATION



FINAL FOR PUBLICATION

600 W 26th STREET FLOOR PLAN

SCALE  $\approx \frac{1}{4}'' = 1'$

