



City of Chicago



O2017-3194

Office of the City Clerk

Document Tracking Sheet

Meeting Date:	4/19/2017
Sponsor(s):	Misc. Transmittal
Type:	Ordinance
Title:	Zoning Reclassification Map No. 4-G at 2018 S May St - App No. 19185T1
Committee(s) Assignment:	Committee on Zoning, Landmarks and Building Standards

19185 TI

INTRO. DATE:

APRIL 19, 2017

ORDINANCE

BE IT ORDAINED BY THE CITY COUNCIL OF THE CITY OF CHICAGO:

SECTION 1. Title 17 of the Municipal Code of Chicago, the Chicago Zoning Ordinance, is hereby amended by changing all of the RT-4 Residential Two-Flat, Townhouse and Multi Unit District symbols and indications as shown on Map No. 4-G in an area bound by

The public alley next West of and parallel to South May Street, a line 76.89 feet North of and parallel to West 20th Place, South May Street, a line 51.26 feet North of and parallel to West 20th Place

to those of a RM4.5 Residential Multi-Unit District.

SECTION 2. This ordinance takes effect after its passage and due publication.

Common Address of Property: 2018 South May Street, Chicago, IL 60608.

NARRATIVE

2018 South May Street

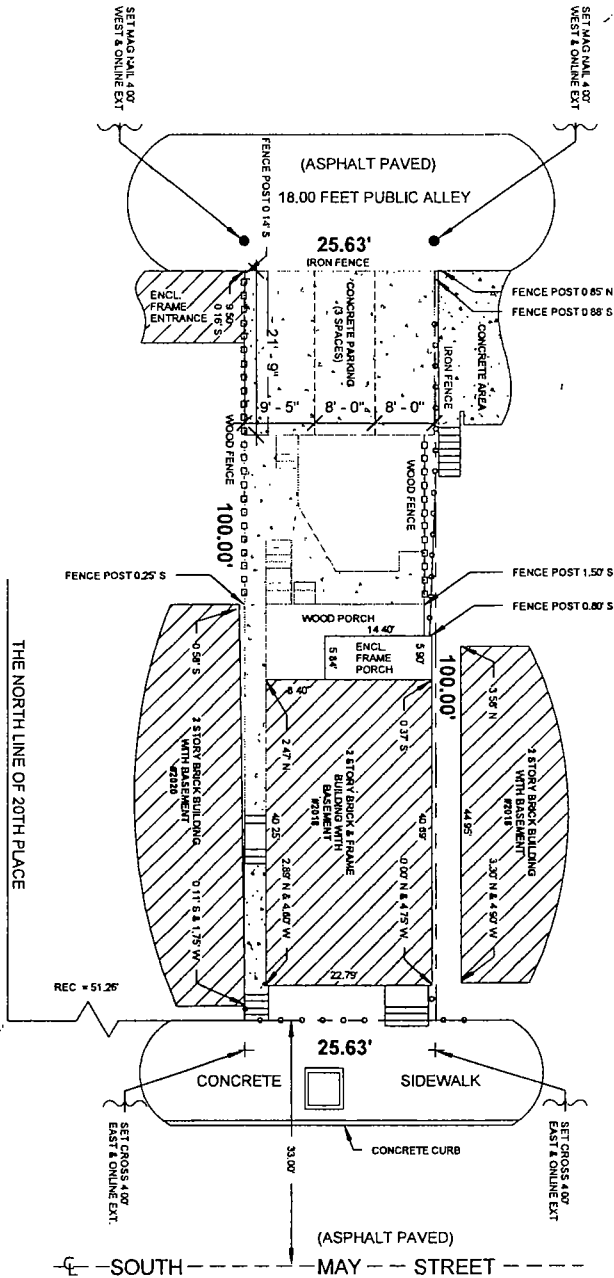
RT4 to RM4.5

In order to allow for the construction of a 1 dwelling unit in the existing ground floor of a 3 story 2 dwelling unit building 26 feet in height for a total of 3 dwelling units and 3 parking spaces

FAR	1.08
Lot Area	2563 square feet
Building Area	2765 square feet
Building Height	26 feet
Front Setback	4.60 feet
Rear Setback	49 feet
North side Setback	0 feet
South side Setback	2.4 feet
Parking	3 spaces

FINAL FOR APPLICATION

1 SITE PLAN
 Z1 SCALE: 1/16" = 1'-0"

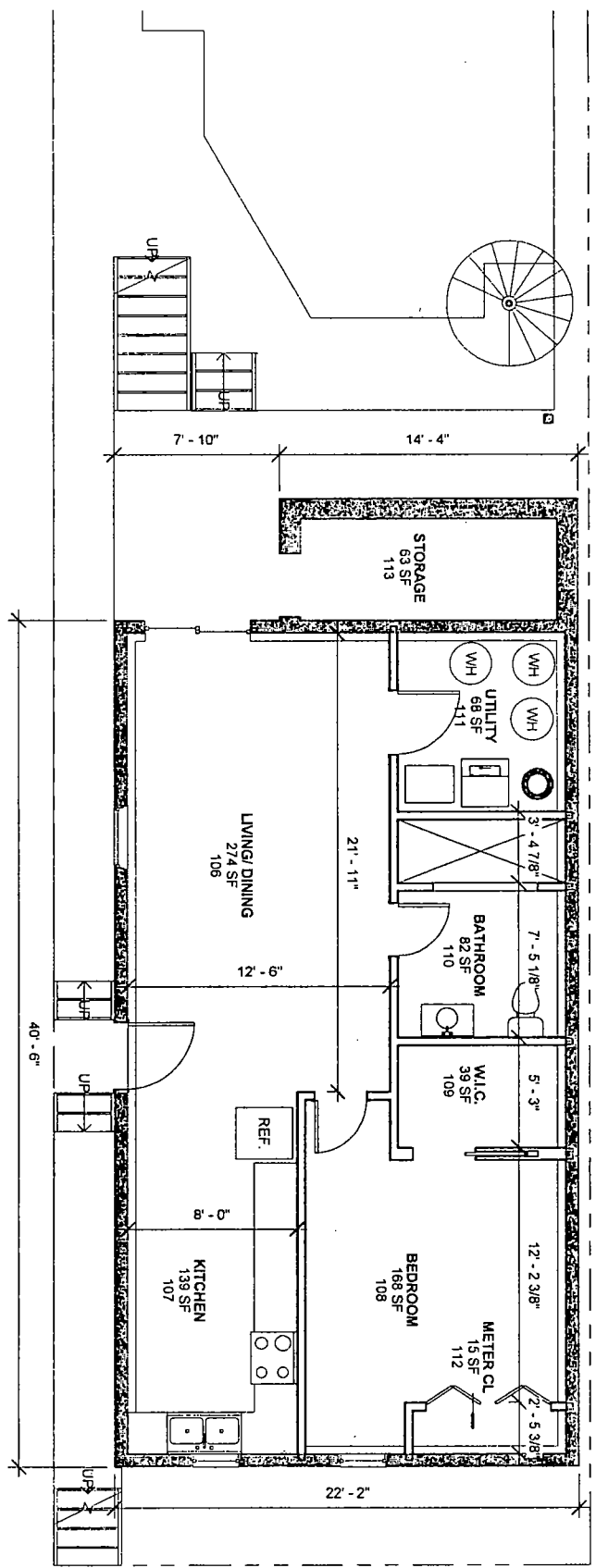


FINAL FOR PUBLICATION





1 BASEMENT PROPOSED PLAN
 Z2 SCALE 3/16" = 1'-0"



FINAL FOR SUBMITTAL

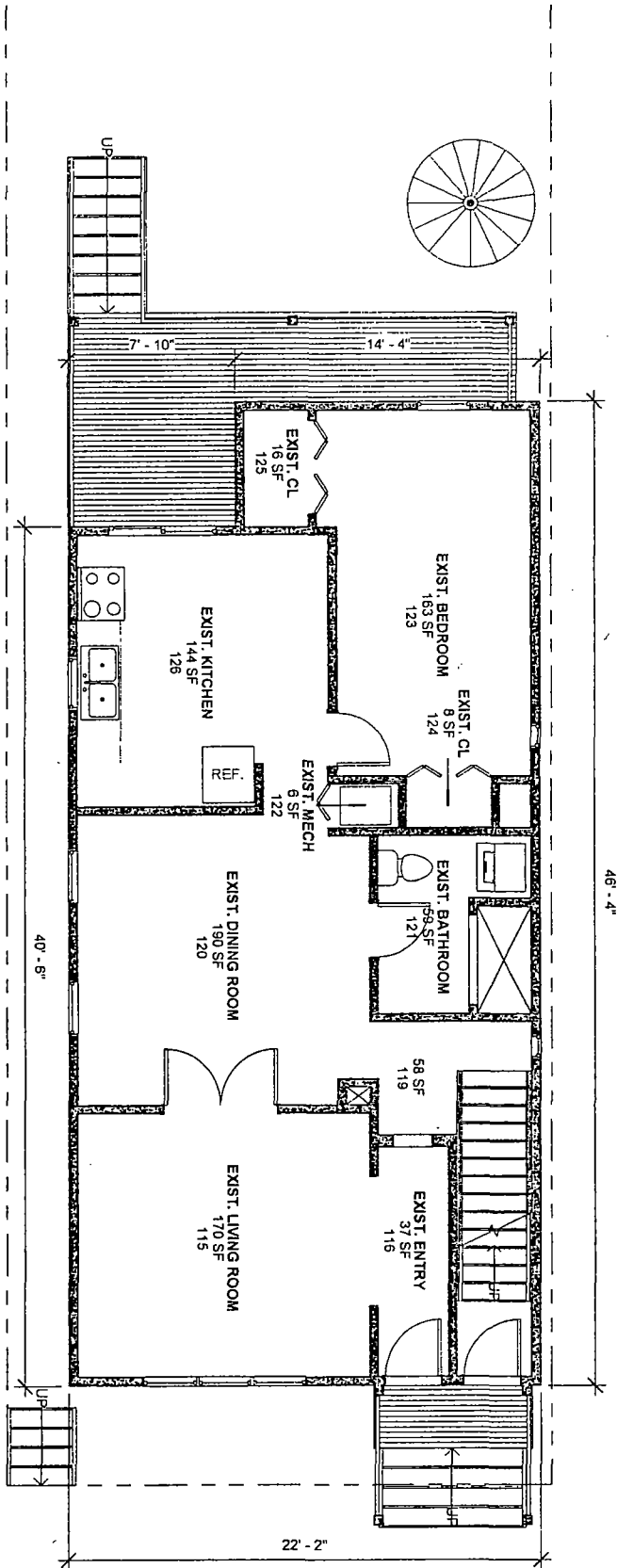
SENGA ARCHITECTS
 SENGARCHITECTS
 WWW.SENGARCH.COM
 355 N LAFIN #206
 Chicago Illinois 60607
 312-235-6802
 info@sengarch.com

ZONING CHANGE
 2018 S MAY ST, CHICAGO, IL 60608



Z3

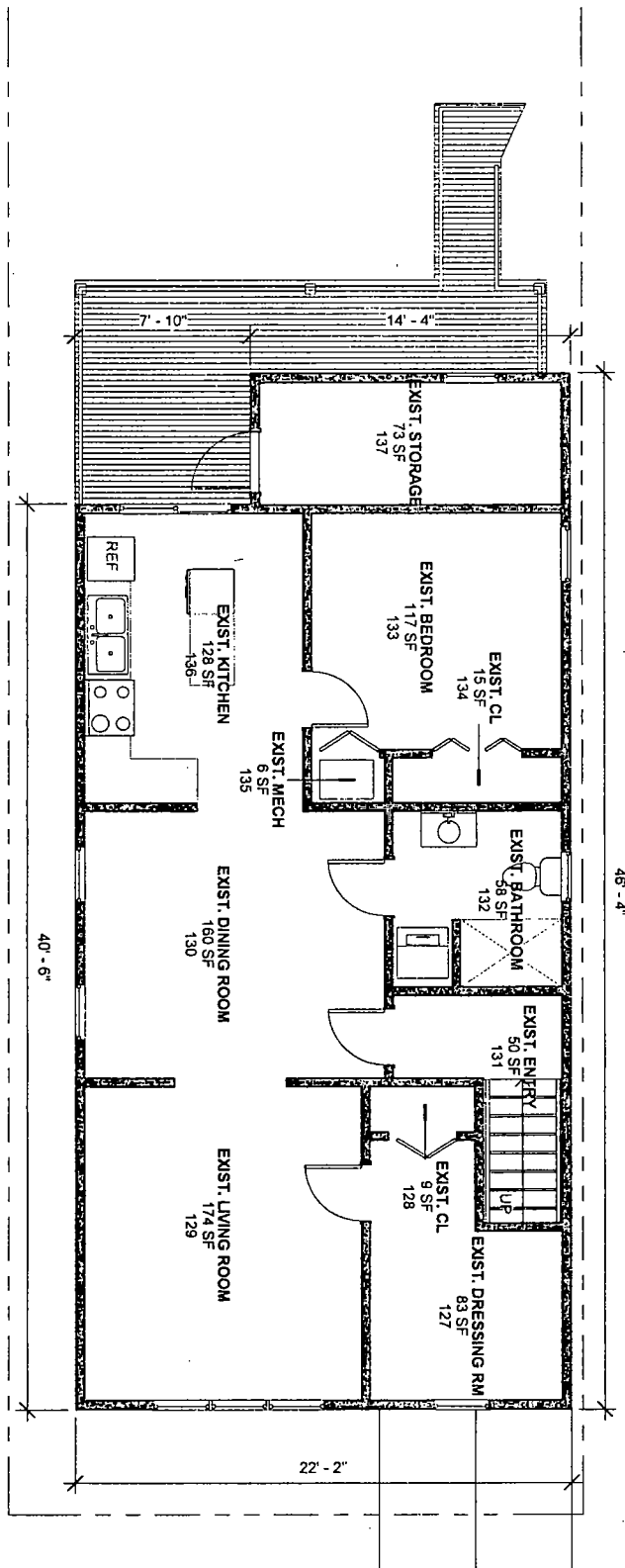
1 1ST FLOOR
 Z3 SCALE: 3/16" = 1'-0"




FINAL FOR SUBMITTAL



1 2ND FLOOR
 Z4 SCALE: 3/16" = 1'-0"



FINAL FOR PUBLICATION



SENGA ARCHITECTS
 SENG ARCHITECTS
 WWW.SENGARCH.COM

355 N LAFLIN #206
 Chicago Illinois
 60607
 312-235-6802
 info@sengarch.com

ZONING CHANGE

2018 S MAY ST, CHICAGO, IL 60608



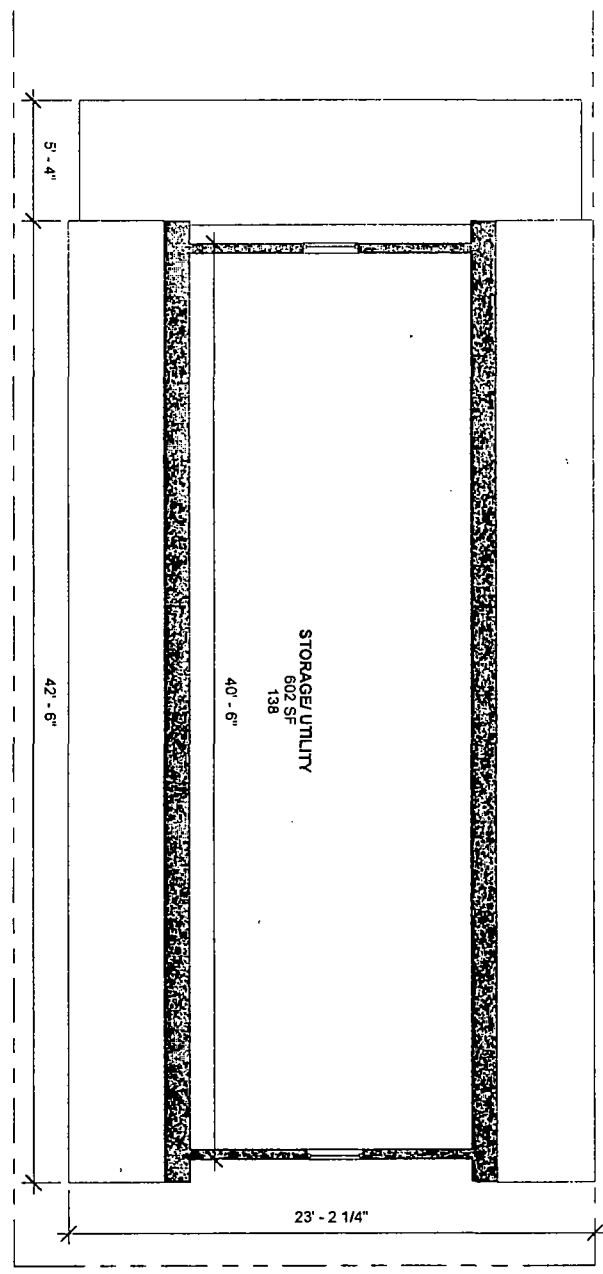
Z5

1

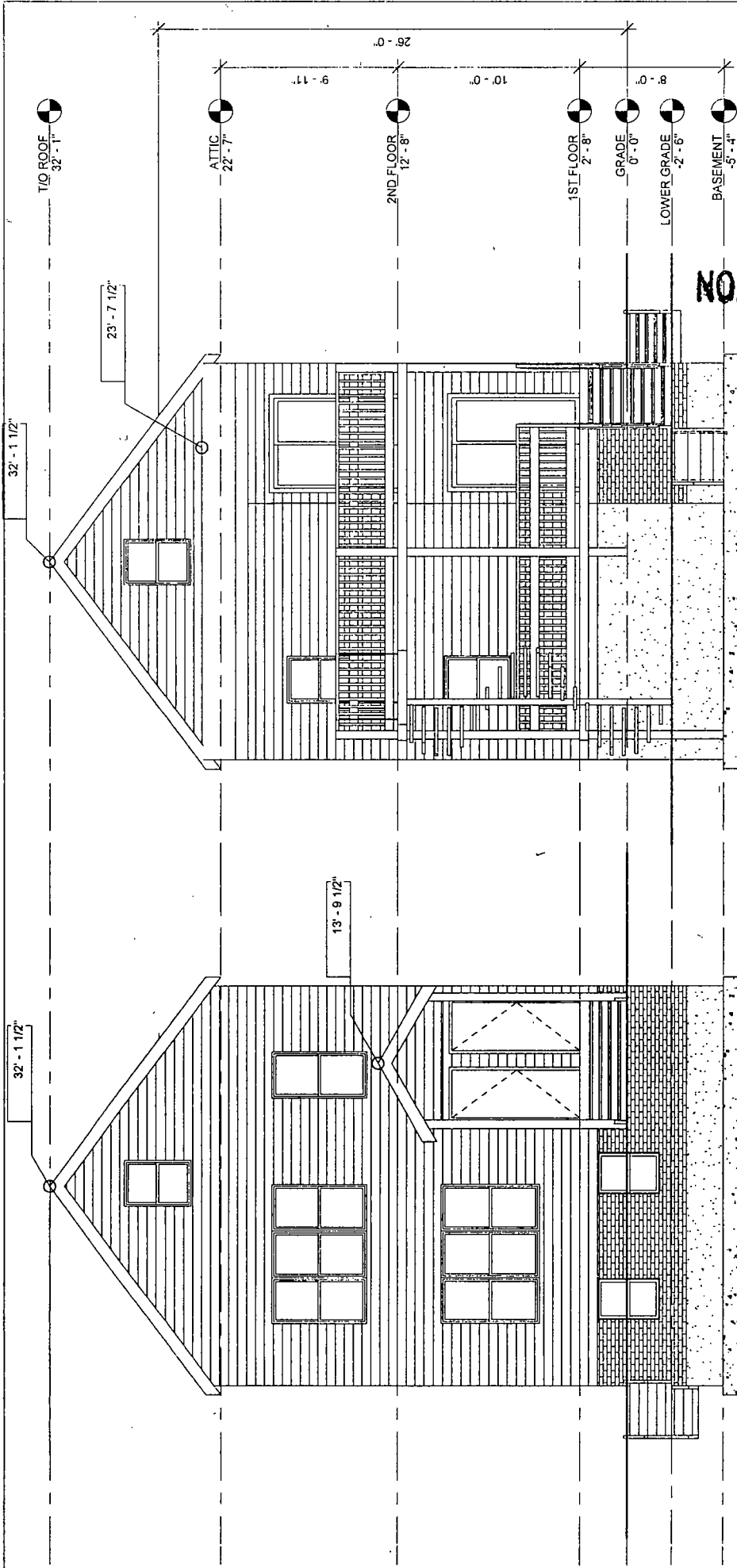
ATTIC

Z5

SCALE: 3/16" = 1'-0"



FINAL FOR PUBLICATION



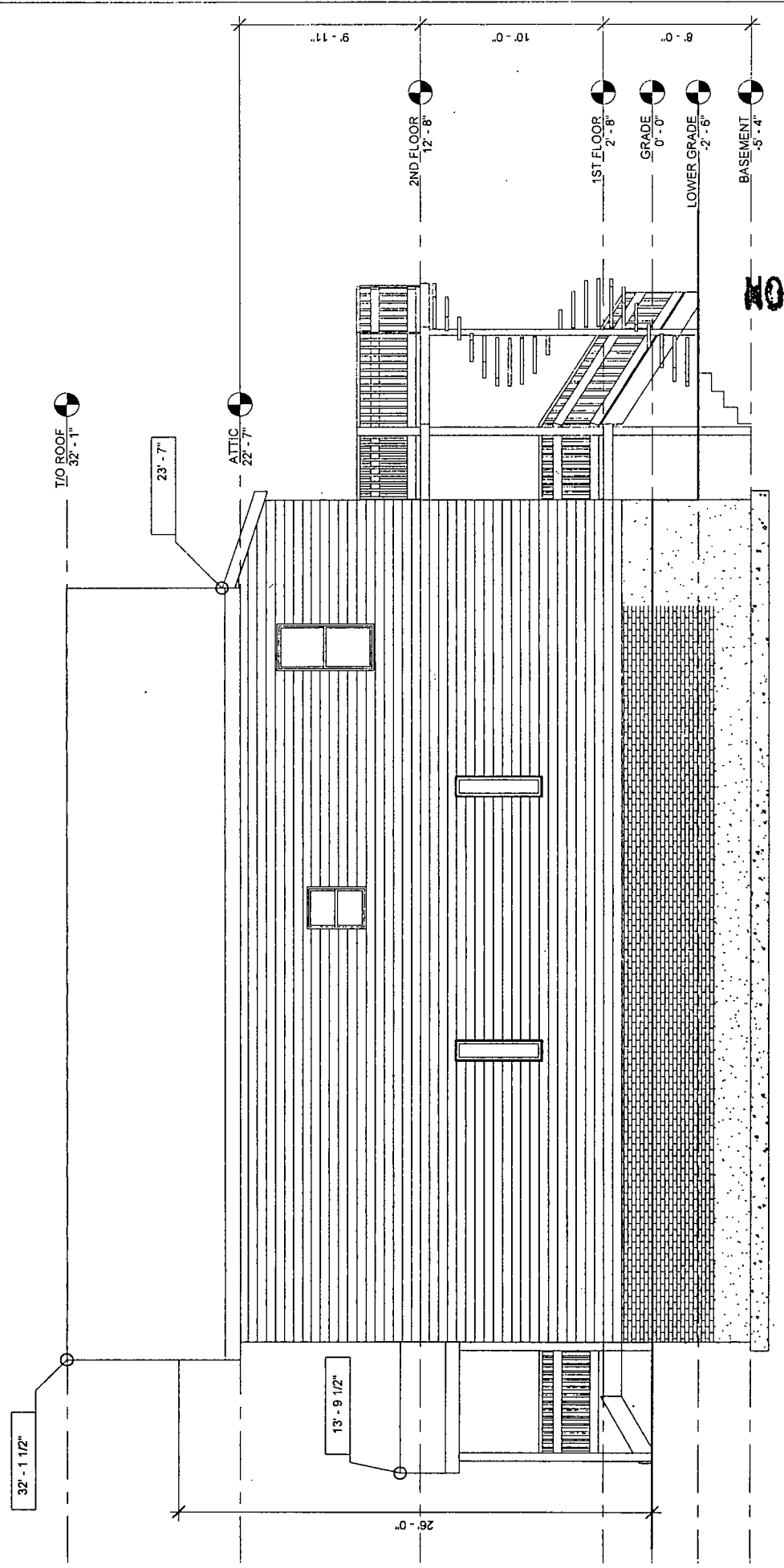
2 WEST ELEVATION
SCALE 3/16" = 1'-0"

1 EAST ELEVATION
SCALE 3/16" = 1'-0"

SENGA ARCHITECTS
SENGA ARCHITECTS
355 N LAFLIN #206
Chicago Illinois 60607
312-235-6802
info@sengaarch.com
www.sengaarch.com

ZONING CHANGE
2018 S MAY ST, CHICAGO, IL 60608

FINAL FOR PERMIT APPLICATION

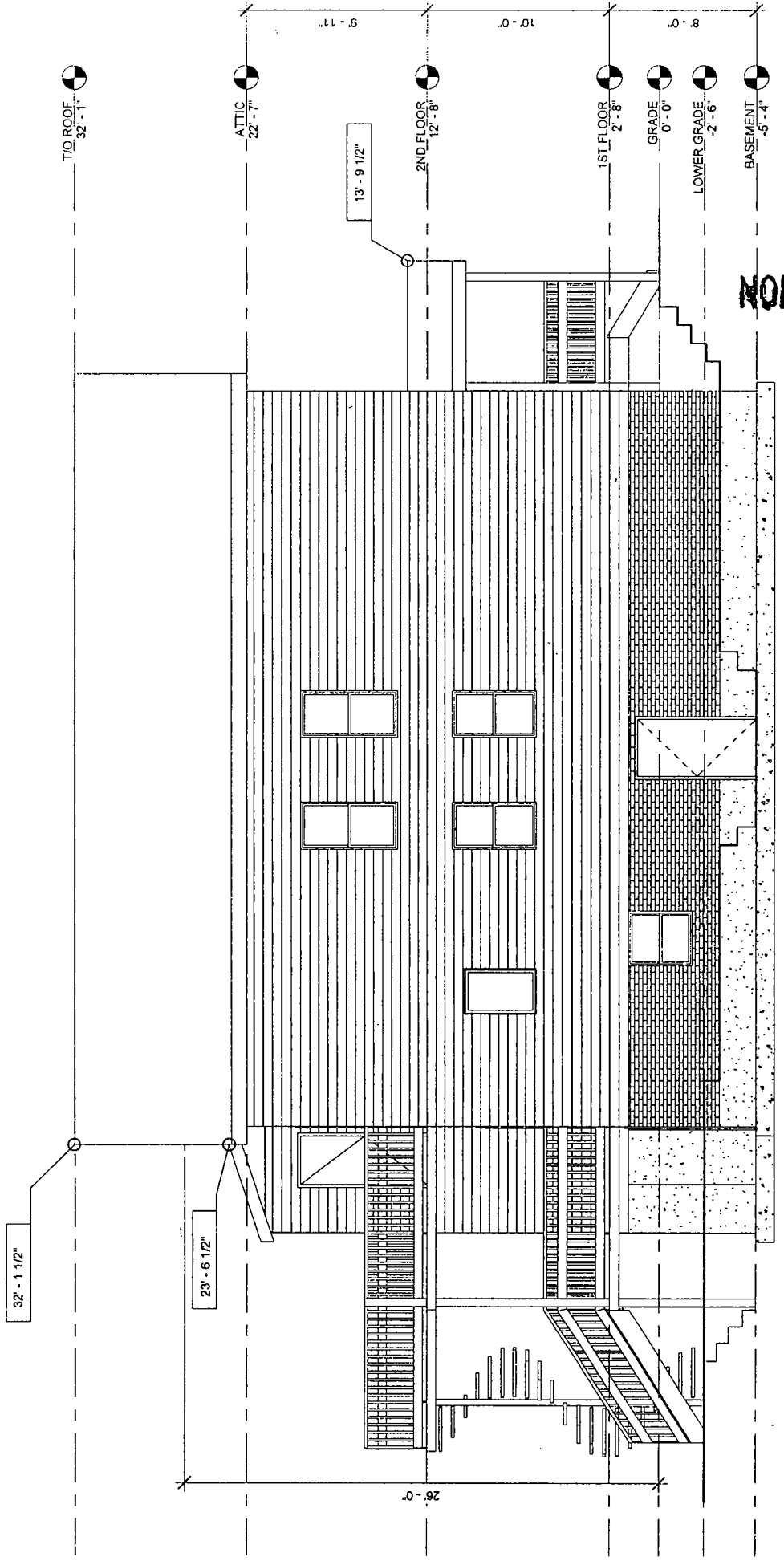


1 NORTH ELEVATION
SCALE: 3/16" = 1'-0"

SENGA ARCHITECTS
SENGA ARCHITECTS
355 N LAFLIN #206
Chicago Illinois 60607
312-235-6802
info@sengarch.com

ZONING CHANGE
2018 S MAY ST, CHICAGO, IL 60608

FILE FOR APPLICATION



1 SOUTH ELEVATION
SCALE: 3/16" = 1'-0"

SENGA ARCHITECTS
SENGA ARCHITECTS
WWW.SENGAARCH.COM
355 N LAFLIN #206
Chicago Illinois
312-235-6802
info@sengaarch.com

ZONING CHANGE
2018 S MAY ST, CHICAGO, IL 60608

FIGURE 1 SOUTH ELEVATION