



City of Chicago



O2018-2299

Office of the City Clerk

Document Tracking Sheet

Meeting Date:	3/28/2018
Sponsor(s):	Misc. Transmittal
Type:	Ordinance
Title:	Zoning Reclassification Map No. 5-I at 2660 W Armitage Ave - 19578T1
Committee(s) Assignment:	Committee on Zoning, Landmarks and Building Standards

ORDINANCE

FINAL FOR PUBLICATION

BE IT ORDAINED BY THE CITY COUNCIL OF THE CITY OF CHICAGO:

SECTION 1. Title 17 of the Municipal Code of Chicago, the Chicago Zoning Ordinance, is hereby amended by changing all of the B3-1 Community Shopping District symbols and indications as shown on Map No. 5-I in an area bound by

A line perpendicular to West Armitage Avenue 149 feet West of the intersection of North Point Street and West Armitage Avenue; the alley next North of and parallel to West Armitage Avenue, North Point Street; a line perpendicular to West Armitage Avenue 124 feet West of the intersection of North Point Street and West Armitage Avenue

to those of a B2-3 Neighborhood Mixed Use District.

SECTION 2. This ordinance takes effect after its passage and due publication.

Common Address of Property: 2660 West Armitage Avenue, Chicago, IL.

NARRATIVE

FINAL FOR PUBLICATION

2660 West Armitage Avenue

B3-1 to B2-3

Applicant seeks to construct a 3 story 3 dwelling unit building 39 feet 4 inches in height with 3 parking spaces

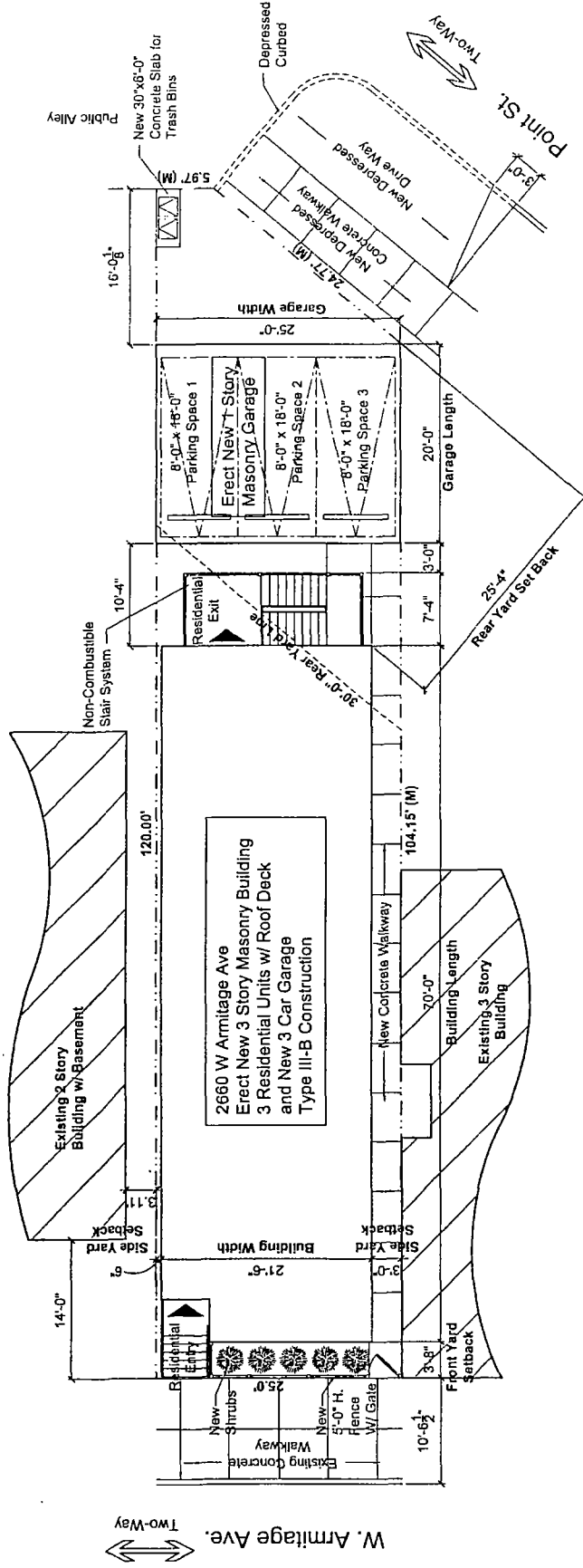
FAR	1.56
Lot Area	2,849.44 Square Feet
Minimum Lot Area Per Dwelling Unit	400 Square Feet
Building Area	8,548.32 Square Feet
Building Height	39 Feet 4 Inches
Front Setback	Zero
Rear Setback	30 Feet 0 Inches
West side Setback	0 Feet 6 Inches
East side Setback	3 Feet 0 Inches
Parking	3 Spaces

FINAL FOR PUBLICATION

2660 W Armitage Ave.

Chicago

Illinois



1 Site Plan
Scale: 1/8" = 1'-0"



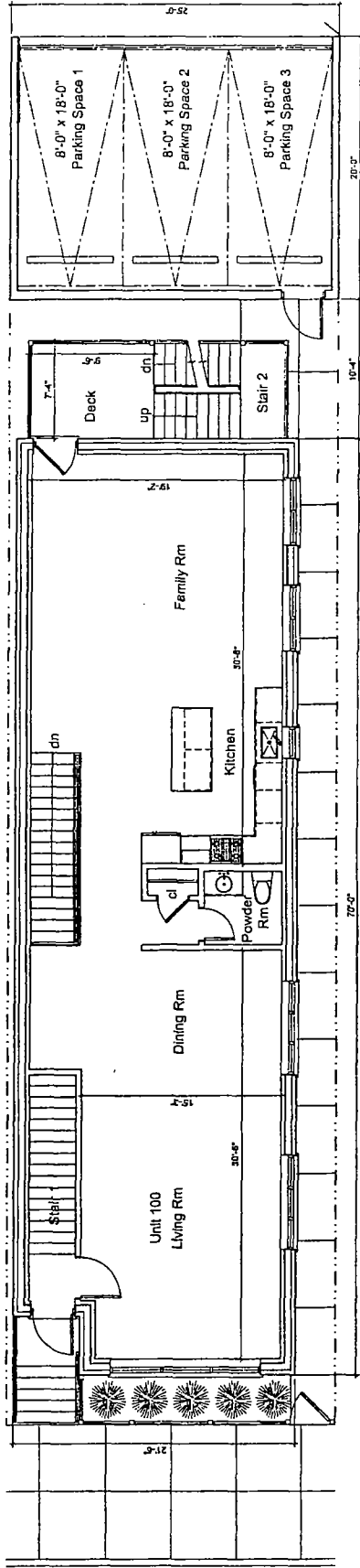
X I O S ARCHITECTS AND CONSULTANTS L.T.D.
101 N. WELLS
CHICAGO, ILLINOIS 60610
TEL. 312.246.1232
FAX 312.246.1232

FINAL FOR PUBLICATION

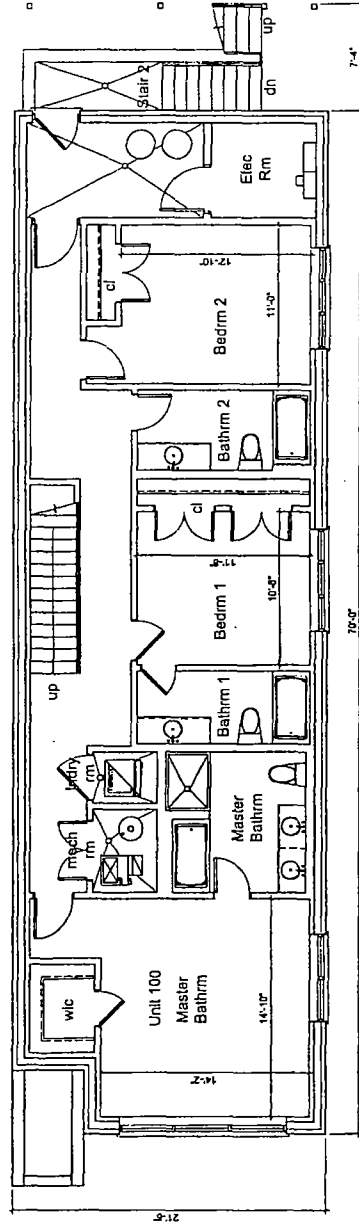
2660 W Armitage Ave.

Chicago

Illinois

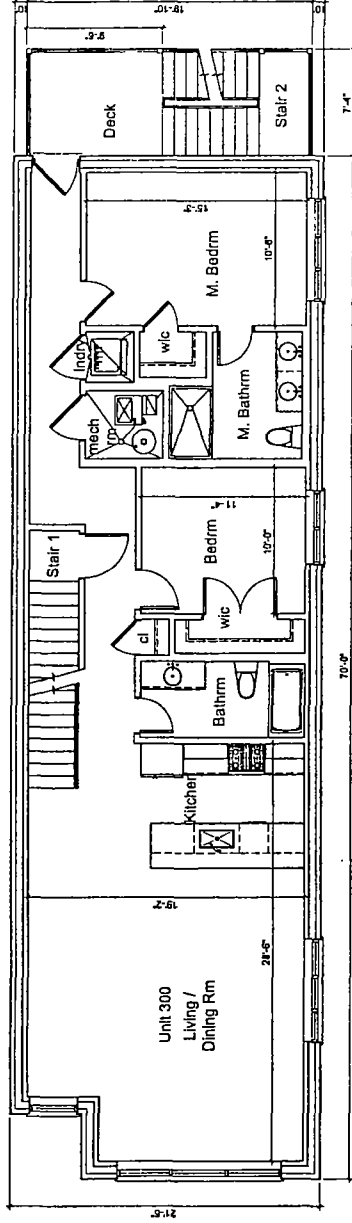


2 First Floor Plan
Scale: 1/8" = 1'-0"

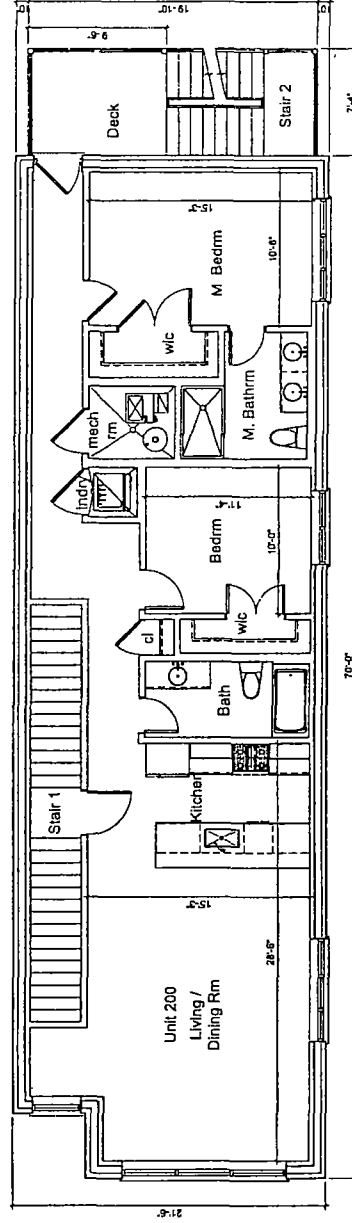


1 Basement Plan
Scale: 1/8" = 1'-0"





2 Third Floor Plan
P3 Scale: 1/8" = 1'-0"



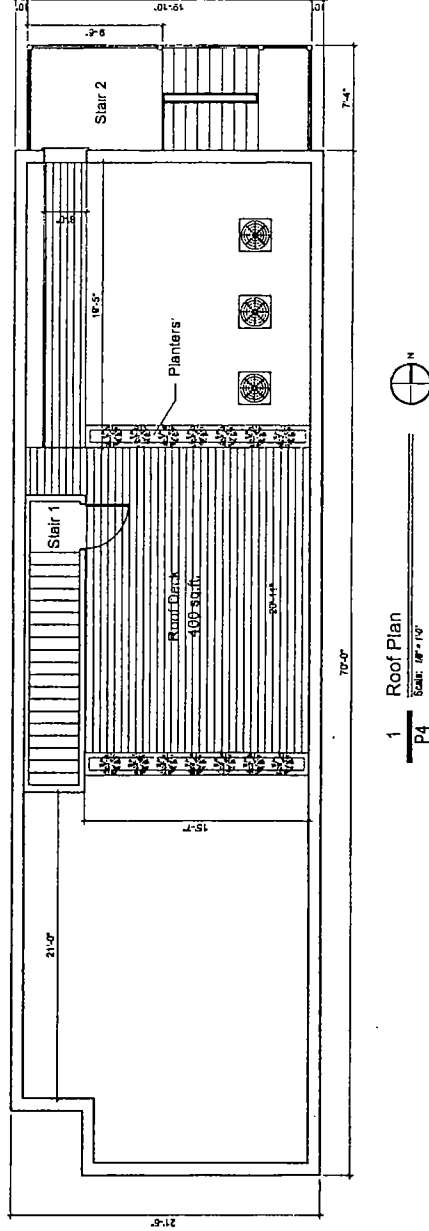
1 Second Floor Plan
P3 Scale: 1/8" = 1'-0"



X I O S ARCHITECTS AND CONSULTANTS L.T.D.

111 W. WELLS
SUITE 202
CHICAGO, ILLINOIS 60604

PH. 312.788.1222
FX. 312.788.1222



1 Roof Plan
p4 Scale: 1/8" = 1'-0"



X I O S ARCHITECTS AND CONSULTANTS L.T.D.

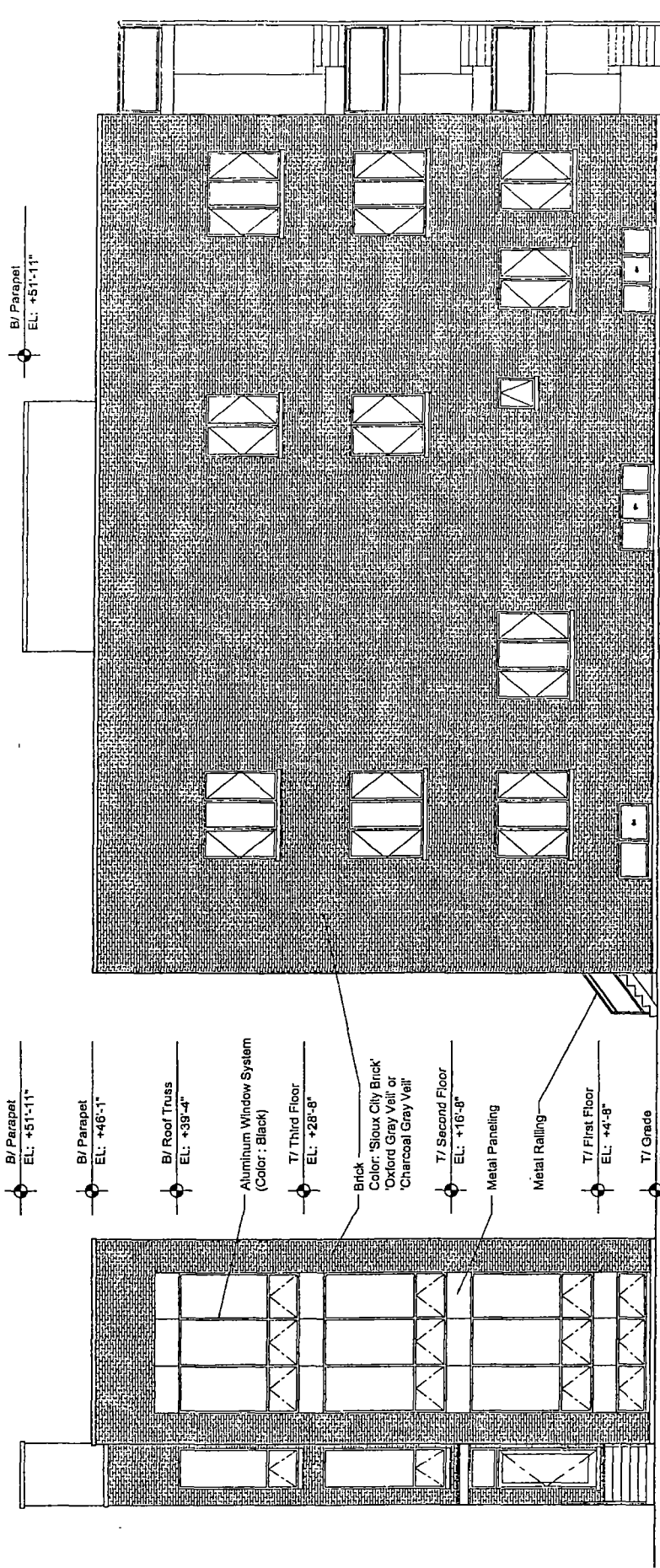
111 S. WELLS
SUITE 200
CHICAGO, ILLINOIS 60606
TEL: 312.468.1333
FAX: 312.468.1332

FINAL FOR PUBLICATION

2660 W Armitage Ave.

Chicago

Illinois



1 South Elevation
P5 Scale: 1/8" = 1'-0"

2 East Elevation
P5 Scale: 1/8" = 1'-0"

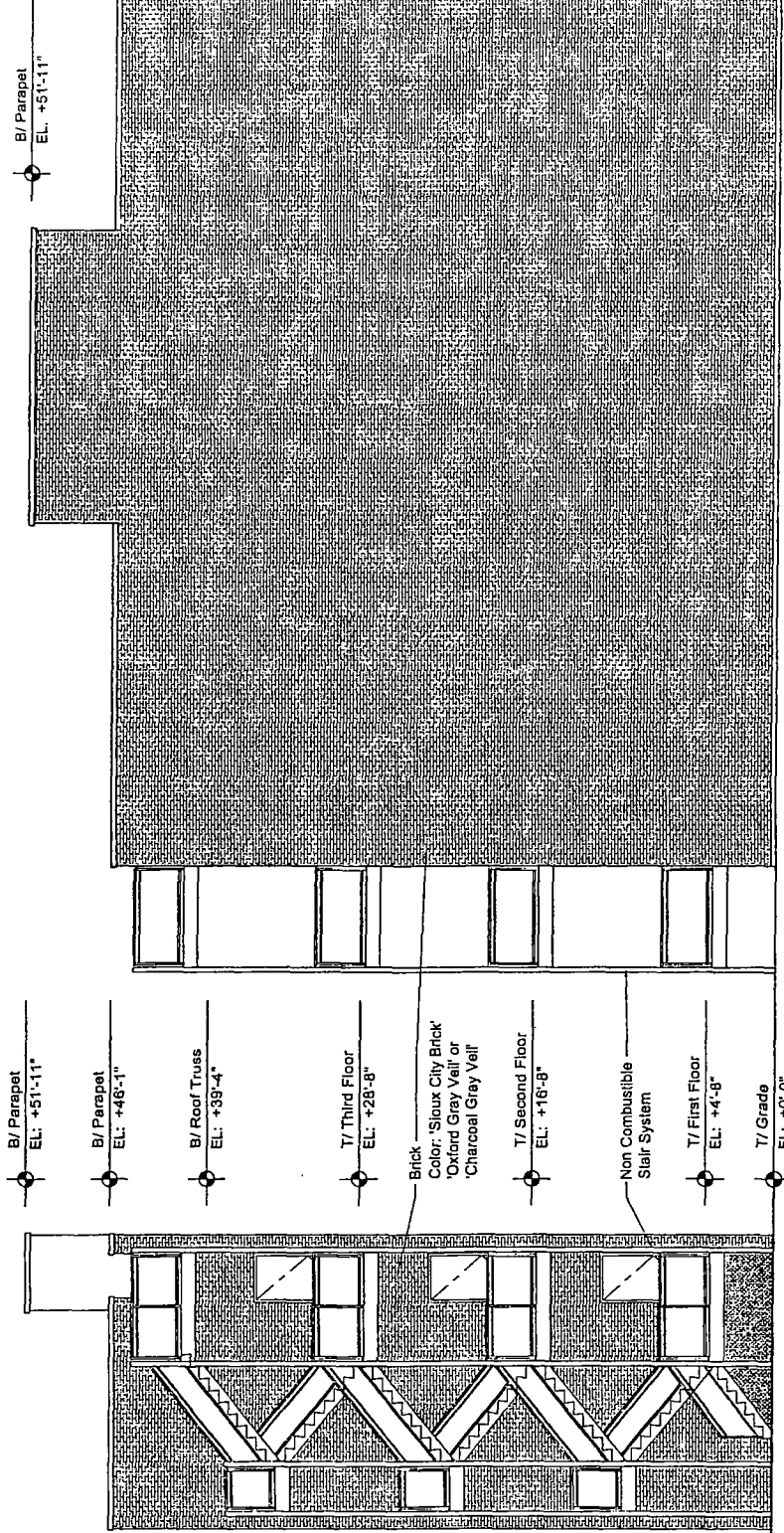


X I O S ARCHITECTS AND CONSULTANTS LTD.
1111 N. WABLER
CHICAGO, ILLINOIS 60610
TEL: 312.329.1111 FAX: 312.329.1112

2660 W Armitage Ave.

Chicago

Illinois



B/ Parapet EL: +51'-11"
 B/ Parapet EL: +46'-1"
 B/ Roof Truss EL: +39'-4"
 T/ Third Floor EL: +28'-8"
 Brick Color: 'Sioux City Brick', 'Oxford Gray Veil' or 'Charcoal Gray Veil'
 T/ Second Floor EL: +18'-8"
 Non Combustible Stair System
 T/ First Floor EL: +4'-8"
 T/ Grade EL: +0'-0"

1 North Elevation
P6 Scale: 1/8" = 1'-0"

1 West Elevation
P6 Scale: 1/8" = 1'-0"



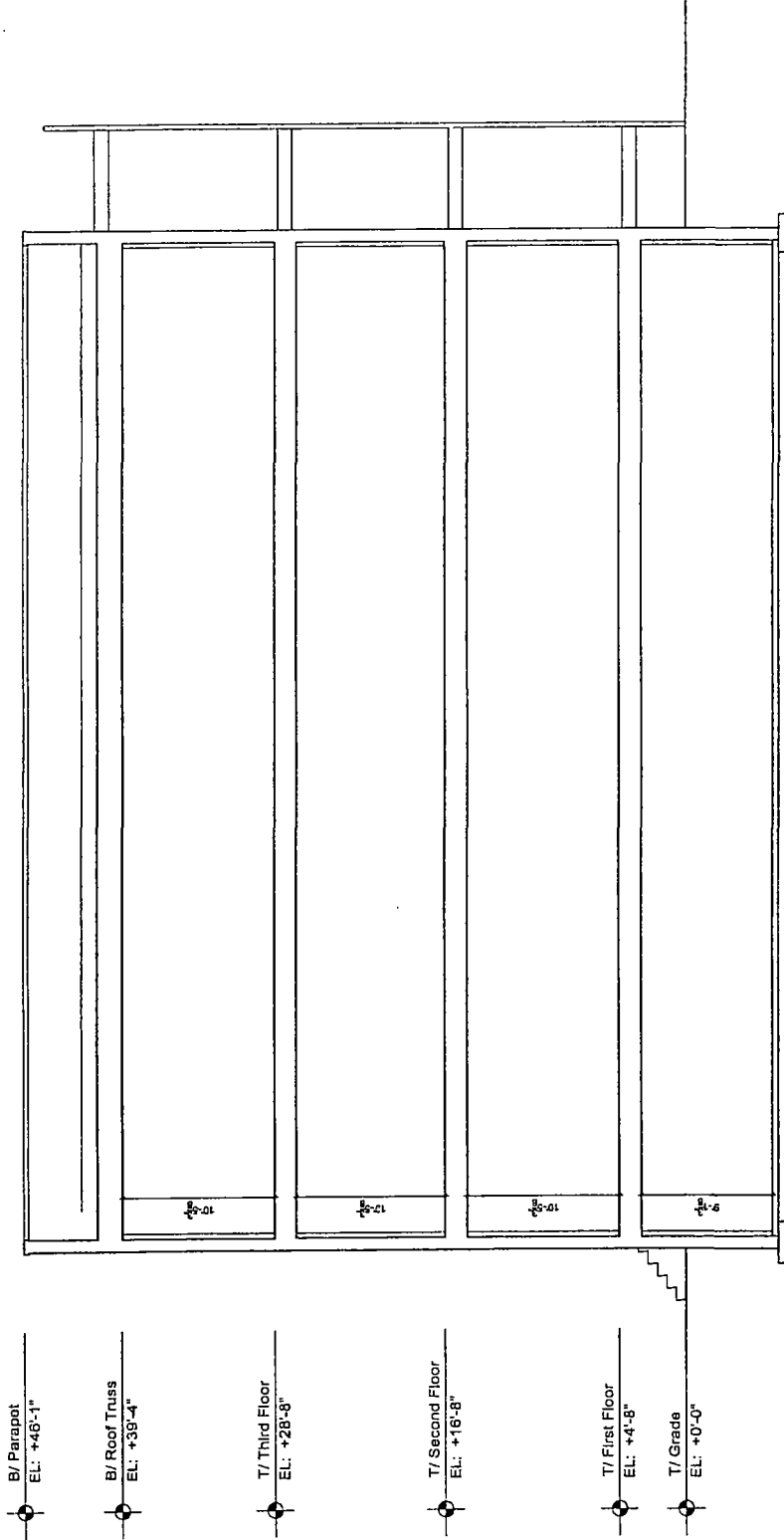
X I O S ARCHITECTS AND CONSULTANTS LTD.

142 N. WELLS
CHICAGO, ILLINOIS 60610
PH. 312.556.1333
FAX. 312.556.1334

2660 W Armitage Ave.

Chicago

Illinois



1 Section
P7
Scale: 1/8" = 1'-0"



X I O S ARCHITECTS AND CONSULTANTS L.T.D.

100 N. WELLS
CHICAGO, ILLINOIS 60602
P.O. BOX 1114
P.O. BOX 1114
CHICAGO, ILLINOIS 60602