



# City of Chicago



Or2018-433

Office of the City Clerk

## Document Tracking Sheet

|                                 |  |
|---------------------------------|--|
| <b>Meeting Date:</b>            | 9/20/2018  |
| <b>Sponsor(s):</b>              | Reilly (42)  |
| <b>Type:</b>                    | Order  |
| <b>Title:</b>                   | Issuance of permits for sign(s)/signboard(s) at 168 N Michigan Ave |
| <b>Committee(s) Assignment:</b> | Committee on Zoning, Landmarks and Building Standards              |

CITY COUNCIL  
COMMITTEE ON ZONING, LANDMARKS AND BUILDING STANDARDS

COUNCIL ORDER

RE: Approval of sign over 100 square feet in area or over 24 feet above grade

ORDERED, that the City Council hereby approves the following sign application submitted by:

Applicant\*: Hotel Julian

(\* The Applicant is the owner of the real property or the business tenant of the real property. Do not list the sign contractor, sign erector, sign company or advertising entity in the above space.)

This Order approves the following sign in accordance with Municipal Code of Chicago Section 13-20-680:

Address of Sign: 168 N Michigan Ave Chicago, IL 60601

Zoning District: DX-16

DOB Sign Permit Application #: 100773111

Sign Details:

1. On-premise X OR Off-premise \_\_\_\_\_

2. Static sign X OR Dynamic-image display sign \_\_\_\_\_

3. Number of sign faces 2

4. Projecting over the public way Y (Yes or No) If yes, Public Way Use #: 1135252

5. Dimensions: Length 4 feet 0 inches Height 13 feet 4 inches

Total square feet in area: 53 feet \_\_\_\_\_ inches

6. Height above grade: 29 feet 3 3/4 inches

7. Elevation (side of building or lot where the sign will be erected): WEST

8. Name of Sign Contractor/Erector: POBLOCKI SIGN COMPANY

To be legal, such sign shall comply with all provisions of Title 17 of the Chicago Municipal Code ("Zoning Ordinance") and all other provisions of the Municipal Code governing the permitting, construction and maintenance and removal of signs and sign structures. Failure of the applicant and the applicant's successors to comply shall be grounds for invalidation or revocation of the sign permit.

  
Alderman

42  
Ward

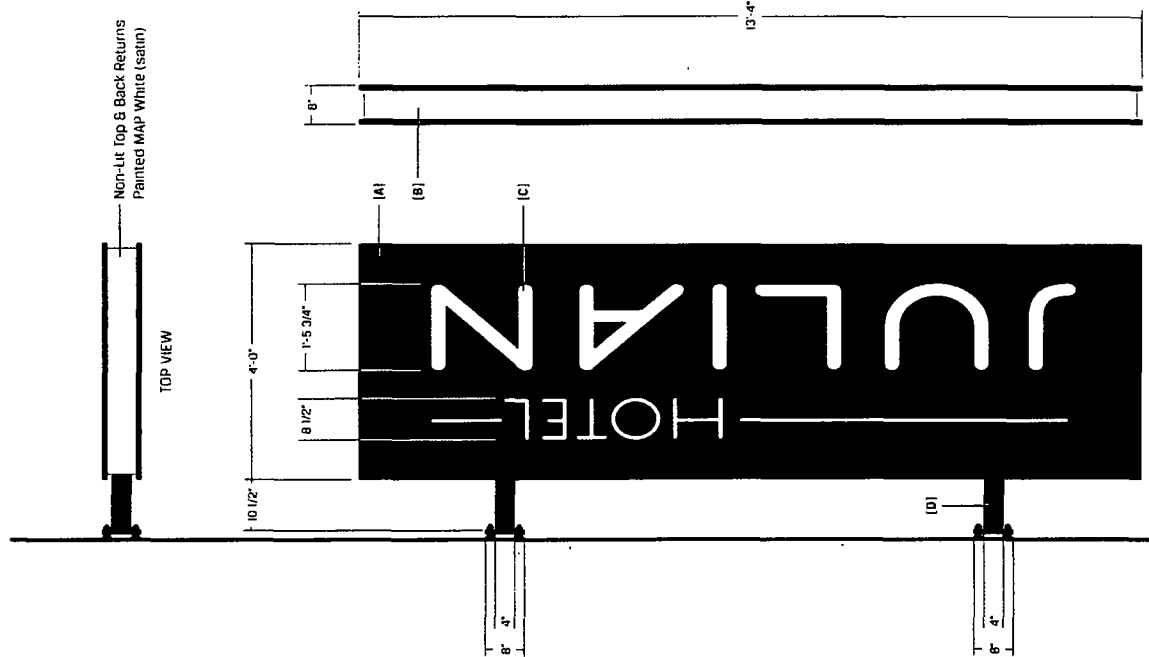


SIGN SPECIFICATIONS

- (A) - CABINET  
Lighting: LEDs w/ Dimming Module  
Voltage: 5.49 amps @ 120 volts  
Material: Aluminum  
Face Color: Black (satin)  
Return Inset Color: White (satin)  
Cabinet Color: Black (satin)
- (B) - EDGE LIGHTING (FRONT END & BOTTOM)  
Description: Push-Thru Flush  
Color: 7728 White Acrylic
- (C) - GRAPHICS  
Backed-up  
Letter Color: 7728 White Acrylic
- (D) - MOUNTING  
Material: 4" x 4" Steel Tube w/ 8" x 8" Steel Plate  
Color: Black (satin)  
Installation: Flag mounted from exterior wall

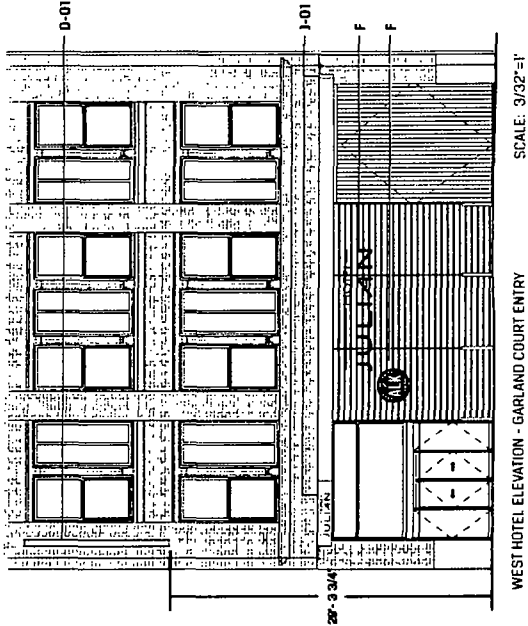


Side B  
Night View



Side A

Side View



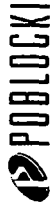
WEST HOTEL ELEVATION - GARLAND COURT ENTRY

SCALE: 3/32"=1'



WEST HOTEL ELEVATION - GARLAND COURT ENTRY

ARTIST RENDERING



322 S. ARTIST, ALHAMBRA, CA 91801  
415.757.4000 - POBLOCKI.COM

POBLOCKI, INC. is a professional architectural and interior design firm. We are a full-service firm, providing a wide range of services to our clients. Our services include architectural design, interior design, and construction management. We are committed to providing our clients with the highest quality of service and the most innovative solutions to their problems. We are a team of professionals who work together to create a vision for our clients and bring it to life. We are a firm that values our clients and their feedback. We are a firm that is always looking for ways to improve our services and our work. We are a firm that is always looking for new opportunities to grow our business and our team. We are a firm that is always looking for ways to make a positive impact on the world. We are a firm that is always looking for ways to make a difference. We are a firm that is always looking for ways to make a positive impact on the world. We are a firm that is always looking for ways to make a difference.

Project

HOTEL  
JULIAN  
168 N. Michigan

Chicago, IL

Scale: 1/2"=1'

Original Page Size: 11" x 17"

Notes

CONFIRM COLORS

Revisions

REV DESCRIPTION

BY DATE

Rev: Michael Dello

Drawn: James Jacobson Day: 04/06/2018

Sheet: 001

D-01

D/F Flag Mounted Cabinet

Copy Type

82140

101

001 - Project - Job No.

Design