



# City of Chicago



O2018-7018

Office of the City Clerk

## Document Tracking Sheet

<b>Meeting Date:</b>	9/20/2018
<b>Sponsor(s):</b>	Hairston (5)
<b>Type:</b>	Ordinance
<b>Title:</b>	Dedication of portions of S Stony Island Avenue and E Midway Plaisance Dr (north) and vacation of portions of E Midway Plaisance Dr (south) and S Cornell Dr
<b>Committee(s) Assignment:</b>	Committee on Transportation and Public Way

## INTERGOVERNMENTAL VACATION AND DEDICATION ORDINANCE

WHEREAS, the City of Chicago ("City") is a home rule unit of local government pursuant to Article VII, Section 6 (a) of the 1970 Constitution of the State of Illinois and, as such, may exercise any power and perform any function pertaining to its government and affairs; and

WHEREAS, certain properties located at approximately 5900-6300 S. Cornell Drive, 5901-6301 S. Cornell Drive, 5901-6301 S. Stony Island Avenue, 1601-1651 E. Midway Plaisance Drive North, 1601-1651 W. Midway Plaisance Drive South and 1600-1650 W. Midway Plaisance Drive South, are owned by the City Park District, a Municipal Corporation; and

WHEREAS, the City Council of the City of Chicago, after due investigation and consideration, has determined that the nature and extent of public use and the public interest to be subserved is such as to warrant the vacation of those parts of the public streets herein vacated, and to accept for public use that portion being dedicated for widening, each as set forth in this ordinance; now, therefore,

BE IT ORDAINED BY THE CITY COUNCIL OF THE CITY OF CHICAGO:

### SECTION 1.

#### HEREBY DEDICATED:

THAT PART OF THE NORTHWEST 1/4 AND THE FRACTIONAL NORTHEAST 1/4 OF SECTION 13, TOWNSHIP 38 NORTH, RANGE 14 EAST OF THE THIRD PRINCIPAL MERIDIAN, LYING WEST OF LAKE MICHIGAN, (EXCEPT THAT PORTION LYING WEST OF THE EAST LINE OF S. SOUTH SHORE DRIVE AND NORTH OF THE SOUTH LINE OF E. 56TH STREET) AND (EXCEPT THAT PART FALLING IN S. STONEY ISLAND AVENUE), AND THAT PART OF THE SOUTHWEST 1/4 AND THE FRACTIONAL SOUTHEAST 1/4 OF SECTION 13, TOWNSHIP 38 NORTH, RANGE 14 EAST OF THE THIRD PRINCIPAL MERIDIAN, LYING WEST OF THE WEST LINE OF LAKE MICHIGAN, (EXCEPTING THAT PART FALLING IN S. STONY ISLAND AVENUE), DESCRIBED AS FOLLOWS:

BEGINNING AT THE INTERSECTION OF THE SOUTH LINE OF E. 60TH STREET EXTENDED EASTERLY WITH A LINE 33.00 FEET EAST OF AND PARALLEL WITH THE WEST LINE OF SECTION 13, TOWNSHIP 38 NORTH, RANGE 13 EAST OF THE THIRD PRINCIPAL MERIDIAN, BEING ALSO A LINE 66.00 FEET EAST OF AND PARALLEL WITH THE WEST LINE OF S. STONY ISLAND AVENUE; THENCE NORTH 01 DEGREE 28 MINUTES 30 SECONDS WEST ALONG SAID PARALLEL LINE 554.86 FEET TO THE SOUTH BACK OF CURB OF E. MIDWAY PLAISANCE DRIVE NORTH; THENCE ALONG SAID SOUTH BACK OF CURB THE FOLLOWING DESCRIBED NINE (9) COURSES AND DISTANCES: 1) NORTHEASTERLY ALONG THE ARC OF A CURVE CONCAVE SOUTHEAST, HAVING A RADIUS OF 20.26 FEET, HAVING A CHORD BEARING NORTH 46 DEGREES 07 MINUTES 28

SECONDS EAST AND A CHORD DISTANCE OF 15.28 FEET FOR A DISTANCE OF 15.67 FEET; 2) THENCE NORTH 86 DEGREES 24 MINUTES 42 SECONDS EAST 27.98 FEET TO A NON-TANGENT CURVE; 3) THENCE EASTERLY ALONG THE ARC OF A CURVE CONCAVE NORTH, HAVING A RADIUS OF 337.52 FEET, HAVING A CHORD BEARING NORTH 81 DEGREES 13 MINUTES 19 SECONDS EAST AND A CHORD DISTANCE OF 61.06 FEET FOR A DISTANCE OF 61.14 FEET TO A NON-TANGENT CURVE; 4) THENCE NORTHEASTERLY ALONG THE ARC OF A CURVE CONCAVE NORTHWEST, HAVING A RADIUS OF 590.00 FEET, HAVING A CHORD BEARING NORTH 72 DEGREES 22 MINUTES 06 SECONDS EAST AND A CHORD DISTANCE OF 75.40 FEET FOR A DISTANCE OF 75.45 FEET TO A NON-TANGENT CURVE; 5) THENCE NORTHEASTERLY ALONG THE ARC OF A CURVE CONCAVE NORTHWEST, HAVING A RADIUS OF 503.81 FEET, HAVING A CHORD BEARING NORTH 64 DEGREES 45 MINUTES 44 SECONDS EAST AND A CHORD DISTANCE OF 69.28 FEET FOR A DISTANCE OF 69.33 FEET TO A NON-TANGENT CURVE; 6) THENCE NORTHEASTERLY ALONG THE ARC OF A CURVE CONCAVE NORTHWEST, HAVING A RADIUS OF 670.66 FEET, HAVING A CHORD BEARING NORTH 58 DEGREES 27 MINUTES 48 SECONDS EAST AND A CHORD DISTANCE OF 34.31 FEET FOR A DISTANCE OF 34.31 FEET; 7) THENCE NORTH 57 DEGREES 02 MINUTES 38 SECONDS EAST 29.79 FEET TO A NON-TANGENT CURVE; 8) THENCE EASTERLY ALONG THE ARC OF A CURVE CONCAVE SOUTH, HAVING A RADIUS OF 43.49 FEET, HAVING A CHORD BEARING NORTH 86 DEGREES 11 MINUTES 53 SECONDS EAST AND A CHORD DISTANCE OF 42.91 FEET FOR A DISTANCE OF 44.87 FEET TO A NON-TANGENT CURVE; 9) THENCE EASTERLY ALONG THE ARC OF A CURVE CONCAVE SOUTHEAST, HAVING A RADIUS OF 88.84 FEET, HAVING A CHORD BEARING SOUTH 61 DEGREES 39 MINUTES 12 SECONDS EAST AND A CHORD DISTANCE OF 8.03 FEET FOR A DISTANCE OF 8.03 FEET TO A NON-TANGENT CURVE; THENCE SOUTHWESTERLY ALONG THE ARC OF A CURVE CONCAVE NORTHWEST, HAVING A RADIUS OF 476.54 FEET, HAVING A CHORD BEARING SOUTH 65 DEGREES 23 MINUTES 20 SECONDS WEST AND A CHORD DISTANCE OF 311.66 FEET FOR A DISTANCE OF 317.50 FEET; THENCE SOUTH 42 DEGREES 06 MINUTES 05 SECONDS WEST 28.98 FEET TO A LINE 67.00 FEET EAST OF AND PARALLEL WITH THE WEST LINE OF SAID SECTION 13; THENCE SOUTH 01 DEGREE 28 MINUTES 30 SECONDS EAST ALONG SAID PARALLEL LINE 1672.65 FEET; THENCE SOUTH 88 DEGREES 31 MINUTES 30 SECONDS WEST 34.00 FEET TO SAID LINE 33.00 FEET EAST OF AND PARALLEL WITH THE WEST LINE OF SECTION 13; THENCE NORTH 01 DEGREE 28 MINUTES 30 SECONDS WEST ALONG SAID PARALLEL LINE 1162.74 FEET TO THE POINT OF BEGINNING; SAID PARCEL OF LAND HEREIN DESCRIBED CONTAINS 70,427 SQUARE FEET, MORE OR LESS, OR 1.62 ACRES, MORE OR LESS, ALL IN COOK COUNTY, ILLINOIS as shaded and legally described by the words "HEREBY DEDICATED" on the plat hereto attached as Exhibit A, which plat for greater clarity, is hereby made a part of this ordinance, be and the same is hereby opened, inasmuch as the same is required for public use and the public interest will be subserved by such dedications.

**HEREBY VACATED:**

**THAT PART OF THE NORTHWEST 1/4 AND THE FRACTIONAL NORTHEAST 1/4 OF SECTION 13, TOWNSHIP 38 NORTH, RANGE 14 EAST OF THE THIRD PRINCIPAL MERIDIAN, LYING WEST OF LAKE MICHIGAN, (EXCEPT THAT PORTION LYING WEST OF THE EAST LINE OF S. SOUTH SHORE DRIVE AND NORTH OF THE SOUTH LINE OF E. 56TH STREET) AND (EXCEPT THAT PART FALLING IN S. STONY ISLAND AVENUE), AND THAT PART OF THE SOUTHWEST 1/4 AND THE FRACTIONAL SOUTHEAST 1/4 OF SECTION 13, TOWNSHIP 38 NORTH, RANGE 14 EAST OF THE THIRD PRINCIPAL MERIDIAN, LYING WEST OF THE WEST LINE OF LAKE MICHIGAN, (EXCEPTING THAT PART FALLING IN S. STONY ISLAND AVENUE), DESCRIBED AS FOLLOWS:**

**COMMENCING AT THE INTERSECTION OF THE SOUTH LINE OF E. 60TH STREET EXTENDED EASTERLY WITH A LINE 67.00 FEET EAST OF AND PARALLEL WITH THE WEST LINE OF SECTION 13, TOWNSHIP 38 NORTH, RANGE 13 EAST OF THE THIRD PRINCIPAL MERIDIAN; THENCE NORTH 01 DEGREE 28 MINUTES 30 SECONDS WEST ALONG SAID PARALLEL LINE 104.46 FEET TO THE SOUTH BACK OF CURB OF E. MIDWAY PLAISANCE DRIVE SOUTH FOR A POINT OF BEGINNING; THENCE CONTINUING NORTH 01 DEGREE 28 MINUTES 30 SECONDS WEST ALONG SAID PARALLEL LINE 43.28 FEET TO THE NORTH BACK OF CURB OF E. MIDWAY PLAISANCE DRIVE SOUTH; THENCE ALONG SAID NORTH BACK OF CURB OF E. MIDWAY PLAISANCE DRIVE SOUTH AND THE WEST BACK OF CURB OF S. CORNELL DRIVE THE FOLLOWING DESCRIBED SEVENTEEN (17) COURSES AND DISTANCES: 1) NORTH 88 DEGREES 43 MINUTES 31 SECONDS EAST 26.17 FEET TO A NON-TANGENT CURVE; 2) THENCE EASTERLY ALONG THE ARC OF A CURVE CONCAVE SOUTH, HAVING A RADIUS OF 678.51 FEET, HAVING A CHORD BEARING SOUTH 89 DEGREES 41 MINUTES 24 SECONDS EAST AND A CHORD DISTANCE OF 37.53 FEET FOR A DISTANCE OF 37.53 FEET TO A NON-TANGENT CURVE; 3) THENCE EASTERLY ALONG THE ARC OF A CURVE CONCAVE SOUTH, HAVING A RADIUS OF 134.58 FEET, HAVING A CHORD BEARING SOUTH 85 DEGREES 01 MINUTE 28 SECONDS EAST AND A CHORD DISTANCE OF 14.46 FEET FOR A DISTANCE OF 14.47 FEET TO A NON-TANGENT CURVE; 4) THENCE EASTERLY ALONG THE ARC OF A CURVE CONCAVE SOUTH, HAVING A RADIUS OF 408.64 FEET, HAVING A CHORD BEARING SOUTH 77 DEGREES 17 MINUTES 09 SECONDS EAST AND A CHORD DISTANCE OF 66.49 FEET FOR A DISTANCE OF 66.56 FEET; 5) THENCE SOUTH 71 DEGREES 30 MINUTES 46 SECONDS EAST 127.79 FEET; 6) THENCE SOUTH 77 DEGREES 05 MINUTES 09 SECONDS EAST 15.64 FEET; 7) THENCE SOUTH 81 DEGREES 09 MINUTES 17 SECONDS EAST 8.18 FEET TO A NON-TANGENT CURVE; 8) THENCE EASTERLY ALONG THE ARC OF A CURVE CONCAVE NORTHWEST, HAVING A RADIUS OF 13.58 FEET, HAVING A CHORD BEARING NORTH 51 DEGREES 19 MINUTES 01 SECOND EAST AND A CHORD DISTANCE OF 21.57 FEET FOR A DISTANCE OF 24.93 FEET; 9) THENCE NORTH 08 DEGREES 53 MINUTES 31 SECONDS EAST 221.32 FEET TO A NON-TANGENT CURVE; 10) THENCE NORTHERLY ALONG THE ARC OF A CURVE CONCAVE WEST, HAVING A RADIUS OF 661.30 FEET, HAVING A CHORD BEARING NORTH 02 DEGREES 44 MINUTES 01 SECOND EAST AND A**

CHORD DISTANCE OF 143.74 FEET FOR A DISTANCE OF 144.02 FEET; 11) THENCE NORTH 04 DEGREES 45 MINUTES 12 SECONDS WEST 65.29 FEET TO A NON-TANGENT CURVE; 12) THENCE NORTHERLY ALONG THE ARC OF A CURVE CONCAVE WEST, HAVING A RADIUS OF 203.17 FEET, HAVING A CHORD BEARING NORTH 06 DEGREES 32 MINUTES 10 SECONDS WEST AND A CHORD DISTANCE OF 12.64 FEET FOR A DISTANCE OF 12.64 FEET TO A NON-TANGENT CURVE; 13) THENCE NORTHERLY ALONG THE ARC OF A CURVE CONCAVE WEST, HAVING A RADIUS OF 518.74 FEET, HAVING A CHORD BEARING NORTH 10 DEGREES 35 MINUTES 53 SECONDS WEST AND A CHORD DISTANCE OF 41.26 FEET FOR A DISTANCE OF 41.27 FEET; 14) THENCE NORTH 16 DEGREES 13 MINUTES 52 SECONDS WEST 32.09 FEET TO A NON-TANGENT CURVE; 15) THENCE NORTHWESTERLY ALONG THE ARC OF A CURVE CONCAVE SOUTHWEST, HAVING A RADIUS OF 206.83 FEET, HAVING A CHORD BEARING NORTH 19 DEGREES 45 MINUTES 27 SECONDS WEST AND A CHORD DISTANCE OF 25.44 FEET FOR A DISTANCE OF 25.46 FEET TO A NON-TANGENT CURVE; 16) THENCE NORTHWESTERLY ALONG THE ARC OF A CURVE CONCAVE SOUTHWEST, HAVING A RADIUS OF 88.01 FEET, HAVING A CHORD BEARING NORTH 28 DEGREES 45 MINUTES 52 SECONDS WEST AND A CHORD DISTANCE OF 16.81 FEET FOR A DISTANCE OF 16.84 FEET TO A NON-TANGENT CURVE; 17) THENCE NORTHWESTERLY ALONG THE ARC OF A CURVE CONCAVE SOUTHWEST, HAVING A RADIUS OF 38.88 FEET, HAVING A CHORD BEARING NORTH 47 DEGREES 29 MINUTES 35 SECONDS WEST AND A CHORD DISTANCE OF 16.07 FEET FOR A DISTANCE OF 16.19 FEET TO A NON-TANGENT CURVE; THENCE NORTHEASTERLY ALONG THE ARC OF A CURVE CONCAVE NORTHWEST, HAVING A RADIUS OF 476.54 FEET, HAVING A CHORD BEARING NORTH 42 DEGREES 50 MINUTES 21 SECONDS EAST AND A CHORD DISTANCE OF 57.57 FEET FOR A DISTANCE OF 57.61 FEET; THENCE NORTH 88 DEGREES 43 MINUTES 12 SECONDS EAST 30.01 FEET TO THE EAST BACK OF CURB OF S. CORNELL DRIVE; THENCE ALONG SAID BACK OF CURB THE FOLLOWING DESCRIBED TWENTY-SEVEN (27) COURSES AND DISTANCES: 1) SOUTH 03 DEGREES 15 MINUTES 39 SECONDS EAST 16.25 FEET TO A NON-TANGENT CURVE; 2) THENCE SOUTHERLY ALONG THE ARC OF A CURVE CONCAVE EAST, HAVING A RADIUS OF 318.65 FEET, HAVING A CHORD BEARING SOUTH 09 DEGREES 21 MINUTES 45 SECONDS EAST AND A CHORD DISTANCE OF 67.74 FEET FOR A DISTANCE OF 67.87 FEET; 3) THENCE SOUTH 13 DEGREES 26 MINUTES 06 SECONDS EAST 50.06 FEET; 4) THENCE SOUTH 12 DEGREES 14 MINUTES 41 SECONDS EAST 33.71 FEET; 5) THENCE SOUTH 09 DEGREES 40 MINUTES 17 SECONDS EAST 17.33 FEET; 6) THENCE SOUTH 07 DEGREES 54 MINUTES 02 SECONDS EAST 46.99 FEET TO A NON-TANGENT CURVE; 7) THENCE SOUTHERLY ALONG THE ARC OF A CURVE CONCAVE WEST, HAVING A RADIUS OF 756.49 FEET, HAVING A CHORD BEARING SOUTH 04 DEGREES 48 MINUTES 37 SECONDS EAST AND A CHORD DISTANCE OF 81.57 FEET FOR A DISTANCE OF 81.61 FEET; 8) THENCE SOUTH 01 DEGREE 44 MINUTES 19 SECONDS EAST 33.71 FEET; 9) THENCE SOUTH 01 DEGREE 03 MINUTES 54 SECONDS EAST 45.33 FEET; 10) THENCE SOUTH 00 DEGREES 06 MINUTES 26

SECONDS EAST 32.07 FEET TO A NON-TANGENT CURVE; 11) THENCE SOUTHERLY ALONG THE ARC OF A CURVE CONCAVE WEST, HAVING A RADIUS OF 346.36 FEET, HAVING A CHORD BEARING SOUTH 01 DEGREES 31 MINUTES 29 SECONDS WEST AND A CHORD DISTANCE OF 19.73 FEET FOR A DISTANCE OF 19.73 FEET TO A NON-TANGENT CURVE; 12) THENCE SOUTHERLY ALONG THE ARC OF A CURVE CONCAVE WEST, HAVING A RADIUS OF 869.90 FEET, HAVING A CHORD BEARING SOUTH 03 DEGREES 43 MINUTES 10 SECONDS WEST AND A CHORD DISTANCE OF 52.46 FEET FOR A DISTANCE OF 52.47 FEET; 13) THENCE SOUTH 05 DEGREES 03 MINUTES 41 SECONDS WEST 151.69 FEET TO A NON-TANGENT CURVE; 14) THENCE SOUTHERLY ALONG THE ARC OF A CURVE CONCAVE EAST, HAVING A RADIUS OF 518.11 FEET, HAVING A CHORD BEARING SOUTH 02 DEGREES 17 MINUTES 47 SECONDS WEST AND A CHORD DISTANCE OF 49.99 FEET FOR A DISTANCE OF 50.01 FEET TO A NON-TANGENT CURVE; 15) THENCE SOUTHERLY ALONG THE ARC OF A CURVE CONCAVE EAST, HAVING A RADIUS OF 235.81 FEET, HAVING A CHORD BEARING SOUTH 02 DEGREES 30 MINUTES 40 SECONDS EAST AND A CHORD DISTANCE OF 16.81 FEET FOR A DISTANCE OF 16.81 FEET TO A NON-TANGENT CURVE; 16) THENCE SOUTHERLY ALONG THE ARC OF A CURVE CONCAVE EAST, HAVING A RADIUS OF 664.52 FEET, HAVING A CHORD BEARING SOUTH 06 DEGREES 53 MINUTES 48 SECONDS EAST AND A CHORD DISTANCE OF 54.33 FEET FOR A DISTANCE OF 54.35 FEET TO A NON-TANGENT CURVE; 17) THENCE SOUTHERLY ALONG THE ARC OF A CURVE CONCAVE EAST, HAVING A RADIUS OF 259.79 FEET, HAVING A CHORD BEARING SOUTH 12 DEGREES 57 MINUTES 45 SECONDS EAST AND A CHORD DISTANCE OF 33.74 FEET FOR A DISTANCE OF 33.76 FEET TO A NON-TANGENT CURVE; 18) THENCE SOUTHEASTERLY ALONG THE ARC OF A CURVE CONCAVE NORTHEAST, HAVING A RADIUS OF 1488.64 FEET, HAVING A CHORD BEARING SOUTH 17 DEGREES 20 MINUTES 30 SECONDS EAST AND A CHORD DISTANCE OF 34.11 FEET FOR A DISTANCE OF 34.11 FEET; 19) THENCE SOUTH 18 DEGREES 18 MINUTES 16 SECONDS EAST 120.65 FEET; 20) THENCE SOUTH 17 DEGREES 43 MINUTES 39 SECONDS EAST 16.20 FEET TO A NON-TANGENT CURVE; 21) THENCE SOUTHEASTERLY ALONG THE ARC OF A CURVE CONCAVE SOUTHWEST, HAVING A RADIUS OF 2765.14 FEET, HAVING A CHORD BEARING SOUTH 15 DEGREES 00 MINUTES 44 SECONDS EAST AND A CHORD DISTANCE OF 117.15 FEET FOR A DISTANCE OF 117.16 FEET TO A NON-TANGENT CURVE; 22) THENCE SOUTHEASTERLY ALONG THE ARC OF A CURVE CONCAVE WEST, HAVING A RADIUS OF 1316.68 FEET, HAVING A CHORD BEARING SOUTH 11 DEGREES 36 MINUTES 27 SECONDS EAST AND A CHORD DISTANCE OF 123.50 FEET FOR A DISTANCE OF 123.55 FEET; 23) THENCE SOUTH 10 DEGREES 01 MINUTE 49 SECONDS EAST 17.37 FEET TO A NON-TANGENT CURVE; 24) THENCE SOUTHERLY ALONG THE ARC OF A CURVE CONCAVE WEST, HAVING A RADIUS OF 1441.11 FEET, HAVING A CHORD BEARING SOUTH 08 DEGREES 37 MINUTES 40 SECONDS EAST AND A CHORD DISTANCE OF 70.54 FEET FOR A DISTANCE OF 70.55 FEET TO A NON-TANGENT CURVE; 25) THENCE

SOUTHERLY ALONG THE ARC OF A CURVE CONCAVE WEST, HAVING A RADIUS OF 2911.95 FEET, HAVING A CHORD BEARING SOUTH 06 DEGREES 06 MINUTES 13 SECONDS EAST AND A CHORD DISTANCE OF 113.98 FEET FOR A DISTANCE OF 113.99 FEET TO A NON-TANGENT CURVE; 26) THENCE SOUTHERLY ALONG THE ARC OF A CURVE CONCAVE WEST, HAVING A RADIUS OF 1834.69 FEET, HAVING A CHORD BEARING SOUTH 03 DEGREES 22 MINUTES 24 SECONDS EAST AND A CHORD DISTANCE OF 103.03 FEET FOR A DISTANCE OF 103.04 FEET; 27) THENCE SOUTH 02 DEGREES 29 MINUTES 07 SECONDS EAST 359.36 FEET; THENCE SOUTH 88 DEGREES 54 MINUTES 14 SECONDS WEST 83.03 FEET TO THE WEST BACK OF CURB OF S. CORNELL DRIVE; THENCE ALONG SAID WEST BACK OF CURB AND THE SOUTH BACK OF CURB OF E. MIDWAY PLAISANCE DRIVE SOUTH THE FOLLOWING DESCRIBED TWENTY-ONE (21) COURSES AND DISTANCES: 1) NORTH 02 DEGREES 07 MINUTES 23 SECONDS WEST 256.79 FEET; 2) THENCE NORTH 02 DEGREES 37 MINUTES 54 SECONDS WEST 136.49 FEET TO A NON-TANGENT CURVE; 3) THENCE NORTHERLY ALONG THE ARC OF A CURVE CONCAVE WEST, HAVING A RADIUS OF 1958.85 FEET, HAVING A CHORD BEARING NORTH 06 DEGREES 58 MINUTES 19 SECONDS WEST AND A CHORD DISTANCE OF 296.49 FEET FOR A DISTANCE OF 296.77 FEET TO A NON-TANGENT CURVE; 4) THENCE NORTHERLY ALONG THE ARC OF A CURVE CONCAVE WEST, HAVING A RADIUS OF 2278.81 FEET, HAVING A CHORD BEARING NORTH 13 DEGREES 16 MINUTES 50 SECONDS WEST AND A CHORD DISTANCE OF 156.54 FEET FOR A DISTANCE OF 156.57 FEET TO A NON-TANGENT CURVE; 5) THENCE NORTHERLY ALONG THE ARC OF A CURVE CONCAVE SOUTHWEST, HAVING A RADIUS OF 569.06 FEET, HAVING A CHORD BEARING NORTH 16 DEGREES 23 MINUTES 00 SECONDS WEST AND A CHORD DISTANCE OF 22.54 FEET FOR A DISTANCE OF 22.54 FEET; 6) THENCE NORTH 17 DEGREES 15 MINUTES 18 SECONDS WEST 50.31 FEET; 7) THENCE NORTH 18 DEGREES 08 MINUTES 19 SECONDS WEST 33.11 FEET TO A NON-TANGENT CURVE; 8) THENCE NORTHWESTERLY ALONG THE ARC OF A CURVE CONCAVE SOUTHWEST, HAVING A RADIUS OF 1681.72 FEET, HAVING A CHORD BEARING NORTH 19 DEGREES 02 MINUTES 11 SECONDS WEST AND A CHORD DISTANCE OF 52.70 FEET FOR A DISTANCE OF 52.70 FEET; 9) THENCE NORTH 20 DEGREES 23 MINUTES 05 SECONDS WEST 50.59 FEET TO A NON-TANGENT CURVE; 10) THENCE NORTHWESTERLY ALONG THE ARC OF A CURVE CONCAVE SOUTHWEST, HAVING A RADIUS OF 487.39 FEET, HAVING A CHORD BEARING NORTH 17 DEGREES 51 MINUTES 43 SECONDS WEST AND A CHORD DISTANCE OF 42.91 FEET FOR A DISTANCE OF 42.92 FEET TO A NON-TANGENT CURVE; 11) THENCE NORTHWESTERLY ALONG THE ARC OF A CURVE CONCAVE SOUTHWEST, HAVING A RADIUS OF 664.97 FEET, HAVING A CHORD BEARING NORTH 17 DEGREES 52 MINUTES 09 SECONDS WEST AND A CHORD DISTANCE OF 58.70 FEET FOR A DISTANCE OF 58.72 FEET TO A NON-TANGENT CURVE; 12) THENCE NORTHWESTERLY ALONG THE ARC OF A CURVE CONCAVE SOUTHWEST, HAVING A RADIUS OF 112.35 FEET, HAVING A CHORD BEARING NORTH 27 DEGREES 03 MINUTES 33 SECONDS WEST AND A CHORD DISTANCE

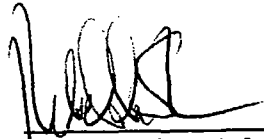
OF 26.06 FEET FOR A DISTANCE OF 26.12 FEET TO A NON-TANGENT CURVE;  
13) THENCE NORTHWESTERLY ALONG THE ARC OF A CURVE CONCAVE  
SOUTHWEST, HAVING A RADIUS OF 206.14 FEET, HAVING A CHORD BEARING  
NORTH 37 DEGREES 09 MINUTES 40 SECONDS WEST AND A CHORD DISTANCE  
OF 24.76 FEET FOR A DISTANCE OF 24.77 FEET TO A NON-TANGENT CURVE;  
14) THENCE NORTHWESTERLY ALONG THE ARC OF A CURVE CONCAVE  
SOUTHWEST, HAVING A RADIUS OF 122.65 FEET, HAVING A CHORD BEARING  
NORTH 49 DEGREES 21 MINUTES 37 SECONDS WEST AND A CHORD DISTANCE  
OF 37.34 FEET FOR A DISTANCE OF 37.49 FEET TO A NON-TANGENT CURVE;  
15) THENCE NORTHWESTERLY ALONG THE ARC OF A CURVE CONCAVE  
SOUTHWEST, HAVING A RADIUS OF 180.70 FEET, HAVING A CHORD BEARING  
NORTH 61 DEGREES 48 MINUTES 49 SECONDS WEST AND A CHORD DISTANCE  
OF 23.29 FEET FOR A DISTANCE OF 23.31 FEET TO A NON-TANGENT CURVE;  
16) THENCE NORTHWESTERLY ALONG THE ARC OF A CURVE CONCAVE  
SOUTHWEST, HAVING A RADIUS OF 231.03 FEET, HAVING A CHORD BEARING  
NORTH 68 DEGREES 00 MINUTES 44 SECONDS WEST AND A CHORD DISTANCE  
OF 20.17 FEET FOR A DISTANCE OF 20.18 FEET; 17) THENCE NORTH 70  
DEGREES 51 MINUTES 23 SECONDS WEST 61.79 FEET TO A NON-TANGENT  
CURVE; 18) THENCE NORTHWESTERLY ALONG THE ARC OF A CURVE  
CONCAVE SOUTHWEST, HAVING A RADIUS OF 393.52 FEET, HAVING A CHORD  
BEARING NORTH 74 DEGREES 13 MINUTES 16 SECONDS WEST AND A CHORD  
DISTANCE OF 46.19 FEET FOR A DISTANCE OF 46.22 FEET TO A NON-TANGENT  
CURVE; 19) THENCE WESTERLY ALONG THE ARC OF A CURVE CONCAVE  
SOUTH, HAVING A RADIUS OF 165.36 FEET, HAVING A CHORD BEARING  
NORTH 80 DEGREES 55 MINUTES 10 SECONDS WEST AND A CHORD DISTANCE  
OF 19.23 FEET FOR A DISTANCE OF 19.24 FEET TO A NON-TANGENT CURVE;  
20) THENCE WESTERLY ALONG THE ARC OF A CURVE CONCAVE SOUTH,  
HAVING A RADIUS OF 705.62 FEET, HAVING A CHORD BEARING NORTH 85  
DEGREES 31 MINUTES 33 SECONDS WEST AND A CHORD DISTANCE OF 31.36  
FEET FOR A DISTANCE OF 31.36 FEET; 21) THENCE SOUTH 89 DEGREES 08  
MINUTES 26 SECONDS WEST 45.64 FEET TO THE POINT OF BEGINNING; SAID  
PARCEL OF LAND HEREIN DESCRIBED CONTAINS 162,765 SQUARE FEET,  
MORE OR LESS, OR 3.74 ACRES, MORE OR LESS, ALL IN COOK COUNTY,  
ILLINOIS as shaded and legally described by the words, "HEREBY VACATED" on the plat  
hereto attached as Exhibit B, which plat for greater clarity, is hereby made a part of this  
ordinance, be and the same is hereby vacated and closed, inasmuch as the same is no longer  
required for public use and the public interest will be subserved by such vacations.

SECTION 2 The vacations and dedications herein provided for are made upon the express condition that, the terms and conditions, including but not limited to, the required improvements ("Improvements") for Department of Water Management sewer and water facilities and associated structures, all as memorialized in the Department of Water Management letters dated March 14, 2018 and June 14, 2018, attached hereto as Exhibits C and D, respectively, and made a part hereof, be complied with and completed at the sole expense of the Department of Planning and Development or its assigns. Completion of the Improvements is subject to and must be approved in writing by the Department of Water Management Sewer Section.

SECTION 3. The vacations and dedications herein provided for are made upon the express condition that within one thousand ninety-five (1095) days after the passage of this ordinance, the Department of Planning and Development or its assign shall file or cause to be filed for recordation with the Office of the Recorder of Deeds of Cook County, Illinois, a certified copy of this ordinance, together with the associated full sized plats as approved by the Department of Transportation's Acting Superintendent of Maps and Plats.

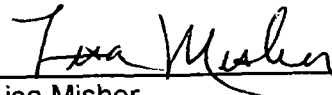
SECTION 4. This ordinance shall take effect and be in force from and after its passage and approval. The vacations and dedications shall take effect and be in force from and after the recording of the approved ordinance and its associated plats.

Vacations and Dedications Approved:

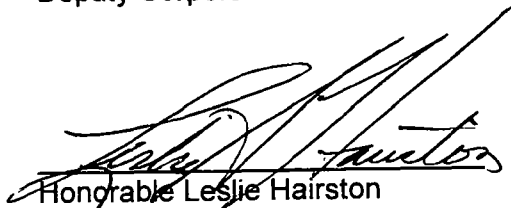


Rebekah Scheinfeld  
Commissioner

Approved as to Form and Legality

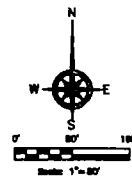
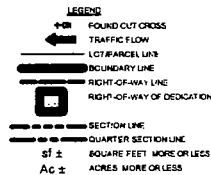


Lisa Misher  
Deputy Corporation Counsel

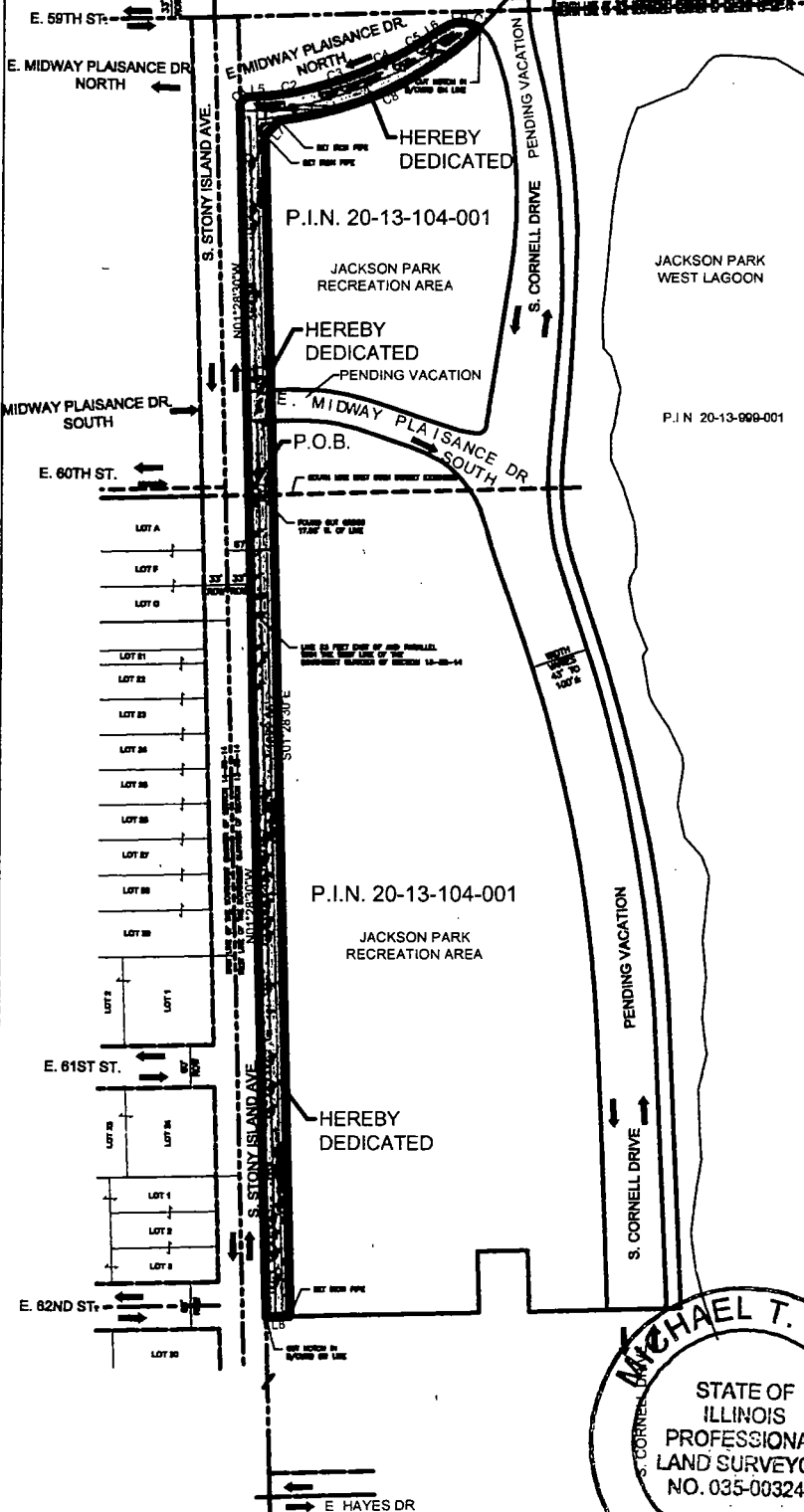


Honorable Leslie Hairston  
Alderman, 5th Ward

# EXHIBIT A PLAT OF DEDICATION



P.I.N. 20-13-104-001



Line Table		
Line #	Length	Direction
L5	27.66'	N88°24'42"E
L6	29.79'	N57°02'36"E
L7	28.06'	S42°06'05"W
L8	34.00'	S08°31'30"W

Curve Table				
Curve #	Length	Radius	Chord Bearing	Chord Length
C1	15.67'	20.26'	N44°07'28"E	15.28'
C2	81.14'	337.52'	N81°13'19"E	81.06'
C3	75.45'	590.00'	N72°22'08"E	75.40'
C4	60.33'	503.91'	N64°45'44"E	60.28'
C5	34.31'	670.66'	N55°27'48"E	34.31'
C6	44.87'	43.48'	N86°11'53"E	42.91'
C7	8.03'	88.84'	S61°39'12"E	8.03'
C8	317.50'	476.54'	S65°23'20"W	311.66'

AREA TO BE DEDICATED	
70,427 sf ±	
1.62 Ac ±	

## NOTES

- DIMENSIONS ARE SHOWN IN FEET AND DECIMAL PARTS THEREOF
- NO DIMENSIONS SHOULD BE ASSUMED BY SCALE MEASUREMENT
- THIS SURVEY IS BASED ON A BOUNDARY SURVEY PREPARED BY ENVIRONMENTAL DESIGN INTERNATIONAL INC. PROJECT 1985 001 01, LAST REVISED 05/07/18
- PROPERTY SHOWN HEREON LIES IN ZONE POS-1 PER CITY OF CHICAGO ZONING MAP AS VIEWED ON THE CITY OF CHICAGO WEBSITE
- THIS SURVEY WAS PERFORMED ON THE GROUND AND COMPLETED ON 12/21/2017
- MONUMENTATION OF THE WEST AND NORTH SIDES TO BE DEDICATED HAS BEEN WAIVED BY THE CITY OF CHICAGO SINCE THE LIMITS OF THIS DEDICATION IS THE EXISTING BACK OF CURB. THE OVERALL BOUNDARY AS REFERENCED IN NOTE NO. 3 WAS MONUMENTED
- ALL MEASUREMENTS SHOWN HEREON ARE MEASURED
- BASIS OF BEARINGS IS ILLINOIS STATE PLANE, EAST ZONE, NAD83 (2011), GPS DERIVED

STATE OF ILLINOIS  
JSS  
COUNTY OF COOK

WE, ENVIRONMENTAL DESIGN INTERNATIONAL, INC. ILLINOIS PROFESSIONAL DESIGN FIRM NO. 184-001224, HEREBY CERTIFY THAT THIS PLAT WAS PREPARED AT AND UNDER THE DIRECT SUPERVISION OF AN ILLINOIS PROFESSIONAL LAND SURVEYOR, AND THAT THIS PLAT REPRESENTS THE CONDITIONS FOUND AT THE TIME OF SAID SURVEY

GIVEN UNDER MY HAND AND SEAL THIS 12th DAY OF JULY 2018 IN CHICAGO, ILLINOIS.

ENVIRONMENTAL DESIGN INTERNATIONAL, INC.



MICHAEL T. RING, PLS NO. 035-003244  
LICENSE EXPIRES 11/30/2018

THIS PROFESSIONAL SERVICE CONFORMS TO THE CURRENT ILLINOIS MINIMUM STANDARDS FOR A BOUNDARY SURVEY

CDOT# 13-05-18-3845

SHEET NUMBER	1 of 2
PROJECT No.	1985 001 05
SCALE	1" = 80'
REVIEWED BY	MR
CHECKED BY	MR
DRAWN BY	JJS
FIELD CREW	JTAW
FIELD DATE	12/21/2017
DATE	02/18/2018
PLAN TYPE	PLAT OF DEDICATION



Prepared For and Made by  
THE OBAMA FOUNDATION  
5235 S HARPER CT  
SUITE 1100  
CHICAGO, IL 60615

PROJECT  
OBAMA PRESIDENTIAL  
CENTER  
JACKSON PARK  
CHICAGO, IL 60637

**EDI**  
Environmental Design International Inc  
Civil Survey, Engineering and Construction Inspection Services  
33 W. MADISON STREET, SUITE 1800 CHICAGO, IL 60601  
Ph: (312) 345-1400 Fax: (312) 345-0529  
www.edi-design.com MBE/WBE/DBE

EXHIBIT A  
PLAT OF DEDICATION

PIN NUMBER:

20-13-104-001

LEGAL DESCRIPTION

THAT PART OF THE NORTHWEST 1/4 AND THE FRACTIONAL NORTHEAST 1/4 OF SECTION 13, TOWNSHIP 38 NORTH, RANGE 14 EAST OF THE THIRD PRINCIPAL MERIDIAN LYING WEST OF LAKE MICHIGAN (EXCEPT THAT PORTION LYING WEST OF THE EAST LINE OF S. SHORE DRIVE AND NORTH OF THE SOUTH LINE OF E. 50TH STREET) AND (EXCEPT THAT PART FALLING IN S. STONEY ISLAND AVENUE) AND THAT PART OF THE SOUTHWEST 1/4 AND THE FRACTIONAL SOUTHEAST 1/4 OF SECTION 13, TOWNSHIP 38 NORTH, RANGE 14 EAST OF THE THIRD PRINCIPAL MERIDIAN LYING WEST OF THE WEST LINE OF LAKE MICHIGAN (EXCEPTING THAT PART FALLING IN STONEY ISLAND AVENUE), DESCRIBED AS FOLLOWS:

BEGINNING AT THE INTERSECTION OF THE SOUTH LINE OF E. 80TH STREET EXTENDED EASTERLY WITH A LINE 33.00 FEET EAST OF AND PARALLEL WITH THE WEST LINE OF SECTION 13, TOWNSHIP 38 NORTH, RANGE 14 EAST OF THE THIRD PRINCIPAL MERIDIAN BEING ALSO A LINE 66.00 FEET EAST OF AND PARALLEL WITH THE WEST LINE OF S. STONEY ISLAND AVENUE; THENCE NORTH 91 DEGREE 28 MINUTES 36 SECONDS WEST ALONG SAID PARALLEL LINE 554.82 FEET TO THE SOUTH BACK OF CURB OF E. MIDWAY PLAZA DRIVE NORTH; THENCE ALONG SAID SOUTH BACK OF CURB THE FOLLOWING DESCRIBED NINE (9) COURSES AND DISTANCES: 1) NORTHEASTERLY ALONG THE ARC OF A CURVE CONCAVE SOUTHEAST HAVING A RADIUS OF 20.25 FEET HAVING A CHORD BEARING NORTH 46 DEGREES 07 MINUTES 28 SECONDS EAST AND A CHORD DISTANCE OF 15.28 FEET FOR A DISTANCE OF 15.97 FEET; 2) THENCE NORTH 86 DEGREES 24 MINUTES 42 SECONDS EAST 27.98 FEET TO A NON-TANGENT CURVE; 3) THENCE EASTERLY ALONG THE ARC OF A CURVE CONCAVE NORTH HAVING A RADIUS OF 337.52 FEET HAVING A CHORD BEARING NORTH 51 DEGREES 13 MINUTES 19 SECONDS EAST AND A CHORD DISTANCE OF 81.98 FEET FOR A DISTANCE OF 81.14 FEET TO A NON-TANGENT CURVE; 4) THENCE NORTHEASTERLY ALONG THE ARC OF A CURVE CONCAVE NORTHWEST HAVING A RADIUS OF 580.00 FEET HAVING A CHORD BEARING NORTH 72 DEGREES 22 MINUTES 06 SECONDS EAST AND A CHORD DISTANCE OF 75.40 FEET FOR A DISTANCE OF 75.40 FEET TO A NON-TANGENT CURVE; 5) THENCE NORTHEASTERLY ALONG THE ARC OF A CURVE CONCAVE NORTHWEST HAVING A RADIUS OF 503.81 FEET HAVING A CHORD BEARING NORTH 84 DEGREES 45 MINUTES 44 SECONDS EAST AND A CHORD DISTANCE OF 69.28 FEET FOR A DISTANCE OF 69.30 FEET TO A NON-TANGENT CURVE; 6) THENCE NORTHEASTERLY ALONG THE ARC OF A CURVE CONCAVE NORTHWEST HAVING A RADIUS OF 870.8 FEET HAVING A CHORD BEARING NORTH 84 DEGREES 11 MINUTES 53 SECONDS EAST AND A CHORD DISTANCE OF 42.51 FEET FOR A DISTANCE OF 44.91 FEET TO A NON-TANGENT CURVE; 7) THENCE NORTH 57 DEGREES 02 MINUTES 38 SECONDS EAST 29.75 FEET TO A NON-TANGENT CURVE; 8) THENCE EASTERLY ALONG THE ARC OF A CURVE CONCAVE SOUTH HAVING A RADIUS OF 43.46 FEET HAVING A CHORD BEARING NORTH 84 DEGREES 11 MINUTES 53 SECONDS EAST AND A CHORD DISTANCE OF 42.51 FEET FOR A DISTANCE OF 44.91 FEET TO A NON-TANGENT CURVE; 9) THENCE EASTERLY ALONG THE ARC OF A CURVE CONCAVE SOUTHEAST HAVING A RADIUS OF 36.84 FEET HAVING A CHORD BEARING SOUTH 01 DEGREES 30 MINUTES 12 SECONDS EAST AND A CHORD DISTANCE OF 8.03 FEET FOR A DISTANCE OF 8.03 FEET TO A NON-TANGENT CURVE; THENCE SOUTHEASTERLY ALONG THE ARC OF A CURVE CONCAVE NORTHWEST HAVING A RADIUS OF 476.54 FEET HAVING A CHORD BEARING SOUTH 85 DEGREES 25 MINUTES 20 SECONDS WEST AND A CHORD DISTANCE OF 311.08 FEET FOR A DISTANCE OF 317.50 FEET; THENCE SOUTH 42 DEGREES 08 MINUTES 03 SECONDS WEST 26.88 FEET TO A LINE 67.00 FEET EAST OF AND PARALLEL WITH THE WEST LINE OF SAID SECTION 13; THENCE SOUTH 01 DEGREE 28 MINUTES 36 SECONDS EAST ALONG SAID PARALLEL LINE 1875.45 FEET; THENCE SOUTH 86 DEGREES 21 MINUTES 30 SECONDS WEST 34.00 FEET TO SAID LINE 33.00 FEET EAST OF AND PARALLEL WITH THE WEST LINE OF SECTION 13; THENCE NORTH 01 DEGREE 28 MINUTES 36 SECONDS WEST ALONG SAID PARALLEL LINE 1102.74 FEET TO THE POINT OF BEGINNING SAID PARCEL OF LAND HEREIN DESCRIBED CONTAINS TO 427 SQUARE FEET MORE OR LESS OR 1.62 ACRES MORE OR LESS ALL IN COOK COUNTY, ILLINOIS.

OWNER'S CERTIFICATE

STATE OF ILLINOIS )  
COUNTY OF )

I, \_\_\_\_\_, HEREBY CERTIFY THAT IT IS THE OWNER OF THE PROPERTY DESCRIBED HEREOF AND AS SUCH HAS CAUSED SAID PROPERTY TO BE SURVEYED FOR THE PURPOSE OF DEDICATING PUBLIC ROADWAY AS SHOWN AND DEPICTED ON PLAT HEREON.

IN WITNESS WHEREOF SAID \_\_\_\_\_ HAS CAUSED THIS CERTIFICATE TO BE SIGNED BY ITS DULY AUTHORIZED \_\_\_\_\_ ON THIS BEHALF  
THIS \_\_\_\_\_ DAY OF \_\_\_\_\_, 20\_\_\_\_

BY: MICHAEL P. KELLY, GENERAL Supt AND CEO  
ADDRESS \_\_\_\_\_

NOTARY'S CERTIFICATE

STATE OF ILLINOIS )  
COUNTY OF )

I, A NOTARY PUBLIC IN AND FOR SAID COUNTY AND STATE AFORESAID DO HEREBY CERTIFY THAT PERSONALLY KNOWN TO BE THE SAME PERSON(S) WHOSE NAME(S) SUBSCRIBED TO THE FOREGOING INSTRUMENT AS SUCH OWNER(S), APPEARED BEFORE ME THIS DAY IN PERSON AND ACKNOWLEDGED THAT THEY SIGNED AND DELIVERED THE ANNEXED PLAT AS THEIR OWN FREE AND VOLUNTARY ACT FOR THE USES AND PURPOSES THEREIN SET FORTH.

GIVEN UNDER SET HAND AND NOTARIAL SEAL THIS \_\_\_\_\_ DAY  
OF \_\_\_\_\_, A.D. 20\_\_\_\_ AT \_\_\_\_\_, ILLINOIS

C.D.O.T.

CITY DEPARTMENT OF FINANCE

COOK COUNTY

CDOT# 13-05-18-3845

SHEET NUMBER	PROJECT No. 1085 001.05		
	SCALE 1" = 80'		
2 OF 2	REVIEWED BY MR.		
	CHECKED BY MR.		
	DRAWN BY JJS		
	FIELD CROWN JTW	PER CDOT REVIEW	8/1/13
	FIELD DATE 12/27/2017	PER CDOT REVIEW	3/15/14
	DATE 02/16/2018	PER CDOT REVIEW	3/15/14
PLAN TYPE PLAT OF DEDICATION	1 PER CDOT REVIEW	8/27/13	
	No. Revision/Issue	Date	



Prepared for and Mail to  
THE OBAMA FOUNDATION  
5235 S HARPER CT.,  
SUITE 1100  
CHICAGO, IL 60615

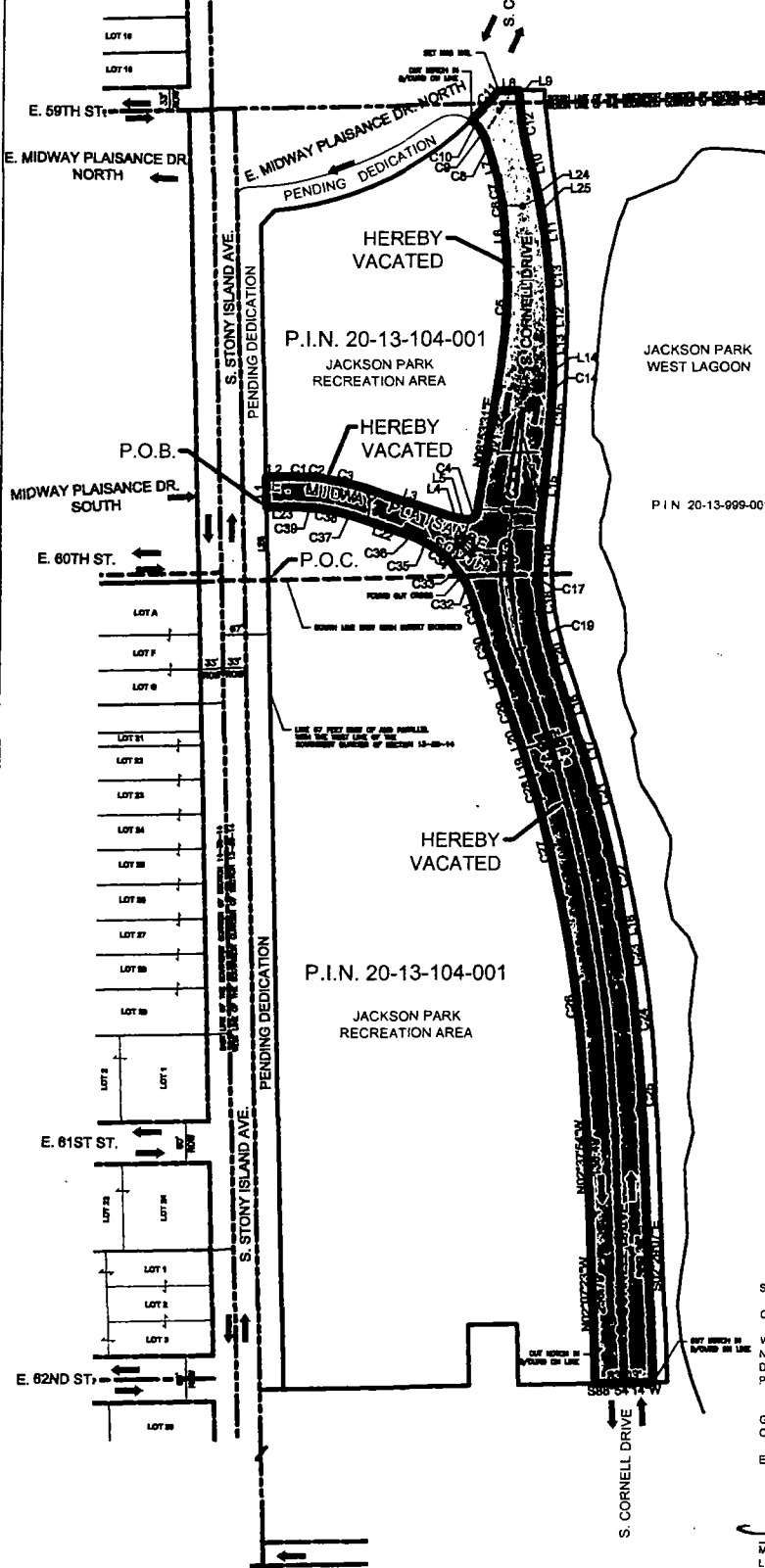
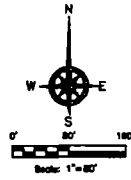
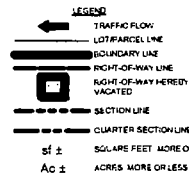
PROJECT  
OBAMA PRESIDENTIAL  
CENTER  
JACKSON PARK  
CHICAGO, IL 60637



Environmental Design International Inc  
Civil Survey, Environmental and Construction Inspection Services  
33 W. 40TH STREET, SUITE 1825 CHICAGO, IL 60603  
PH (312) 345-1400 FAX (312) 345-6529  
www.ediinc.com MBE/WBE/DBE  
Prepared by: [Signature]

# EXHIBIT B PLAT OF VACATION

P.I.N. 20-13-104-001



Line Table			Curve Table			
Line #	Length	Direction	Curve #	Length	Radius	Chord Bearing Chord Length
L1	43.28'	N01°28'30"W	C1	37.53'	678.51'	S89°41'24"E 37.53'
L2	26.17'	N88°43'31"E	C2	14.47'	134.58'	S85°01'28"E 14.46'
L3	127.79'	S71°30'46"E	C3	66.56'	408.64'	S77°17'09"E 66.49'
L4	15.84'	S77°05'00"E	C4	24.93'	13.56'	N51°19'01"E 21.57'
L5	8.18'	S81°08'17"E	C5	144.02'	661.30'	N02°44'01"E 143.74'
L6	68.29'	N04°45'12"W	C6	12.64'	203.17'	N08°32'10"W 12.64'
L7	32.08'	N18°13'52"W	C7	41.27'	518.74'	N10°35'53"W 41.26'
L8	30.01'	N88°43'12"E	C8	25.48'	206.83'	N18°45'27"W 25.44'
L9	16.25'	S03°15'38"E	C9	16.84'	88.01'	N28°45'52"W 16.81'
L10	80.06'	S13°28'06"E	C10	16.18'	36.88'	N47°29'35"W 16.07'
L11	46.99'	S07°54'02"E	C11	67.81'	476.54'	N42°50'21"E 67.57'
L12	33.71'	S01°44'10"E	C12	67.87'	318.65'	S09°21'40"E 67.74'
L13	45.33'	S01°03'54"E	C13	81.81'	736.46'	S04°48'37"E 81.87'
L14	32.07'	S00°06'26"E	C14	19.73'	346.36'	S01°31'29"W 19.73'
L15	151.88'	S05°03'41"W	C15	52.47'	889.80'	S03°43'10"W 52.46'
L16	120.65'	S18°18'16"E	C16	50.01'	516.11'	S02°17'47"W 49.99'
L17	16.20'	S17°43'38"E	C17	16.81'	235.81'	S02°30'40"E 16.81'
L18	17.37'	S10°01'46"E	C18	54.35'	664.52'	S06°53'48"E 54.33'
L19	50.31'	N17°15'18"W	C19	33.76'	256.79'	S12°57'45"E 33.74'
L20	33.11'	N18°08'19"W	C20	34.11'	1488.84'	S17°28'30"E 34.11'
L21	50.56'	N20°23'05"W	C21	117.18'	2786.14'	S18°00'44"E 117.18'
L22	61.79'	N70°51'23"W	C22	123.55'	1316.68'	S11°36'27"E 123.50'
L23	45.64'	S89°06'26"W	C23	70.55'	1441.11'	S08°37'40"E 70.54'
L24	33.71'	S12°14'41"E	C24	113.88'	2911.85'	S08°06'13"E 113.88'
L25	17.33'	S08°40'17"E	C25	103.04'	1634.68'	S03°22'24"E 103.03'
L26	104.48'	N01°28'30"W	C26	286.77'	1856.65'	N06°58'19"W 286.49'
L27	156.57'	2278.81'	C27	156.57'	2278.81'	N13°18'50"W 156.54'
L28	22.54'	588.06'	C28	22.54'	588.06'	N16°23'00"W 22.54'
L29	52.70'	1681.72'	C29	52.70'	1681.72'	N19°02'11"W 52.70'
L30	42.82'	487.36'	C30	42.82'	487.36'	N17°51'43"W 42.91'
L31	58.72'	664.97'	C31	58.72'	664.97'	N17°52'08"W 58.70'
L32	26.12'	112.35'	C32	26.12'	112.35'	N27°03'33"W 26.06'
L33	24.77'	206.14'	C33	24.77'	206.14'	N37°09'40"W 24.76'
L34	37.49'	122.85'	C34	37.49'	122.85'	N49°21'37"W 37.34'
L35	23.31'	180.70'	C35	23.31'	180.70'	N51°48'46"W 23.20'
L36	20.18'	231.03'	C36	20.18'	231.03'	N58°00'44"W 20.17'
L37	46.22'	363.52'	C37	46.22'	363.52'	N74°13'18"W 46.19'
L38	19.24'	165.36'	C38	19.24'	165.36'	N80°55'10"W 19.23'
L39	31.36'	705.82'	C39	31.36'	705.82'	N85°31'33"W 31.36'

AREA TO BE VACATED:  
162,765 sf ±  
3.74 Ac ±

## NOTES

- DIMENSIONS ARE SHOWN IN FEET AND DECIMAL PARTS THEREOF
- NO DIMENSIONS SHOULD BE ASSUMED BY SCALE MEASUREMENT
- THIS SURVEY IS BASED ON A BOUNDARY SURVEY PREPARED BY ENVIRONMENTAL DESIGN INTERNATIONAL INC. PROJECT 1985 001 01, LAST REVISED 05/07/18
- PROPERTY SHOWN HEREON LIES IN ZONE POS-1 PER CITY OF CHICAGO ZONING MAP AS VIEWED ON THE CITY OF CHICAGO WEBSITE
- THIS SURVEY WAS PERFORMED ON THE GROUND AND COMPLETED ON 12/21/2017
- MONUMENTATION OF THE AREA TO BE VACATED HAS BEEN WAIVED BY THE CITY OF CHICAGO SINCE THE LIMITS OF THIS VACATION IS THE EXISTING BACK OF CURB. THE OVERALL BOUNDARY AS REFERENCED IN NOTE NO. 3 WAS MONUMENTED
- ALL MEASUREMENTS SHOWN HEREON ARE MEASURED
- BASIS OF BEARINGS IS ILLINOIS STATE PLANE, EAST ZONE, NAD83 (2011), GPS DERIVED

STATE OF ILLINOIS  
COUNTY OF COOK

WE, ENVIRONMENTAL DESIGN INTERNATIONAL, INC., ILLINOIS PROFESSIONAL DESIGN FIRM NO. 184-001224, HEREBY CERTIFY THAT THIS PLAT WAS PREPARED AT AND UNDER THE DIRECT SUPERVISION OF AN ILLINOIS PROFESSIONAL LAND SURVEYOR AND THAT THIS PLAT REPRESENTS THE CONDITIONS FOUND AT THE TIME OF SAID SURVEY

GIVEN UNDER MY HAND AND SEAL THIS 21 DAY OF JULY, 2018  
CHICAGO, ILLINOIS

ENVIRONMENTAL DESIGN INTERNATIONAL, INC.

MICHAEL T. RING, IPLS NO. 035 003244  
LICENSE EXPIRES 11/30/2018

THIS PROFESSIONAL SERVICE CONFORMS TO THE CURRENT ILLINOIS MINIMUM STANDARDS FOR A BOUNDARY SURVEY



CDOT# 13-05-18-3845

SHEET NUMBER	PROJECT No.	SCALE	REVIEWED BY	CHECKED BY	DRAWN BY	FIELD DATE	DATE	PLAN TYPE
1 of 2	1885 001.05	1" = 80'	MR	MR	JJS	12/21/17	02/16/2018	PLAT OF VACATION
			PER CDOT REVIEW					
			2/19/18					
			2/19/18					
			2/19/18					
			2/19/18					
			2/19/18					



Prepared For and Mailed to:  
THE OBAMA FOUNDATION  
5235 S. HARPER CT.  
SUITE 1100  
CHICAGO, IL 60615

PROJECT  
OBAMA PRESIDENTIAL  
CENTER  
JACKSON PARK  
CHICAGO, IL 60637

Environmental Design International Inc  
201 S. Wacker Drive, Suite 1800, Chicago, IL 60606  
Tel: (312) 345-1400 Fax: (312) 345-0505  
www.ediinc.com MBE/WBE/DBE

Supplemental Digital Content is available in the form of a downloadable text file. Visit [www.lww.com](http://www.lww.com) for more information.