



City of Chicago



O2018-6985

Office of the City Clerk

Document Tracking Sheet

Meeting Date:	9/20/2018
Sponsor(s):	Misc. Transmittal
Type:	Ordinance
Title:	Zoning Reclassification Map No. 7-J at 3124 N Central Park Ave - App No. 19808T1
Committee(s) Assignment:	Committee on Zoning, Landmarks and Building Standards

ORDINANCE

BE IT ORDAINED BY THE CITY COUNCIL OF THE CITY OF CHICAGO:

SECTION 1. Title 17 of the Municipal Code of Chicago, the Chicago Zoning Ordinance, is hereby amended by changing all of the RS3 Residential Single-Unit (Detached House) District symbols and indications as shown on Map No. 7-J in an area bound by

The alley next west of and parallel to North Central Park Avenue; a line 341 feet south of and parallel to West Belmont Avenue; North Central Park Avenue, a line 366 feet south of and parallel to West Belmont Avenue.

to those of an RM4.5 Residential Multi-Use District.

SECTION 2. This ordinance takes effect after its passage and due publication.

Common Address of Property: 3124 North Central Park Avenue

FINAL FOR PUBLICATION

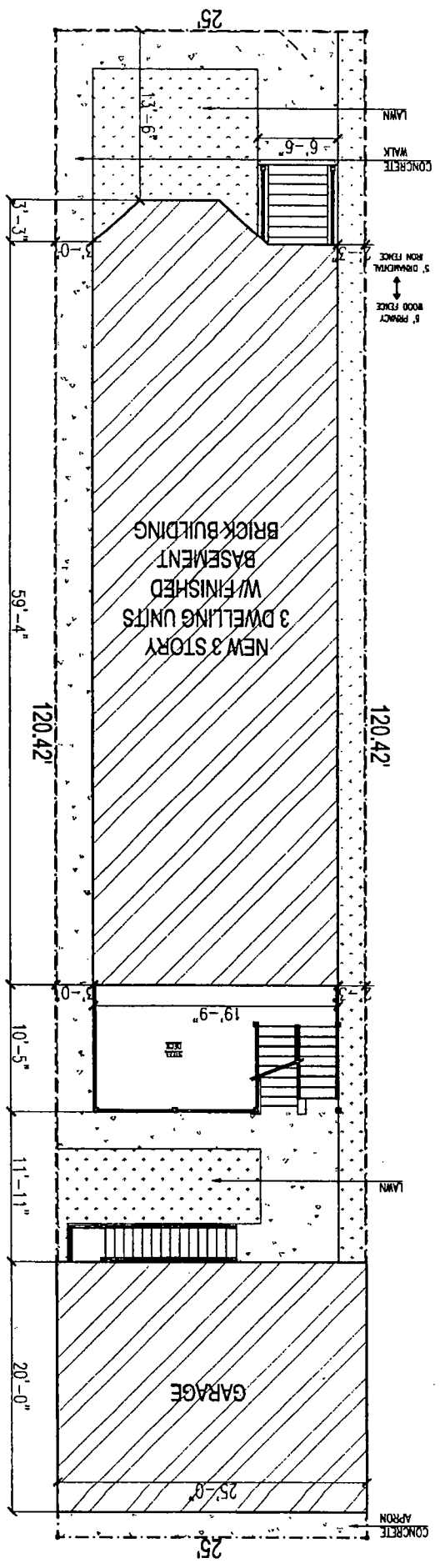
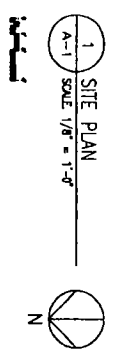
NARRATIVE AND PLANS
3124 NORTH CENTRAL PARK AVENUE
Zoning from RS3 to RM4.5

Applicant seeks to build a 3 story, 3 dwelling unit building 38.0' in height with 3 parking spaces.

FAR	1.19
Lot Area	3010.5 Square Feet
Building Area	3582 Square Feet
Building Height	38 Feet 0 Inches
Front Setback	13 Feet 6 Inches
Rear Setback	44 Feet 4 Inches
West side Setback	2 Feet 3 Inches
East side Setback	3 Feet 0 Inches
Parking	3 Spaces

FINAL FOR PUBLICATION

FINAL FOR PUBLICATION



3124 N CENTRAL PARK, CHICAGO, IL
NEW 3 FLOOR 3 DWELLING UNITS BRICK BUILDING

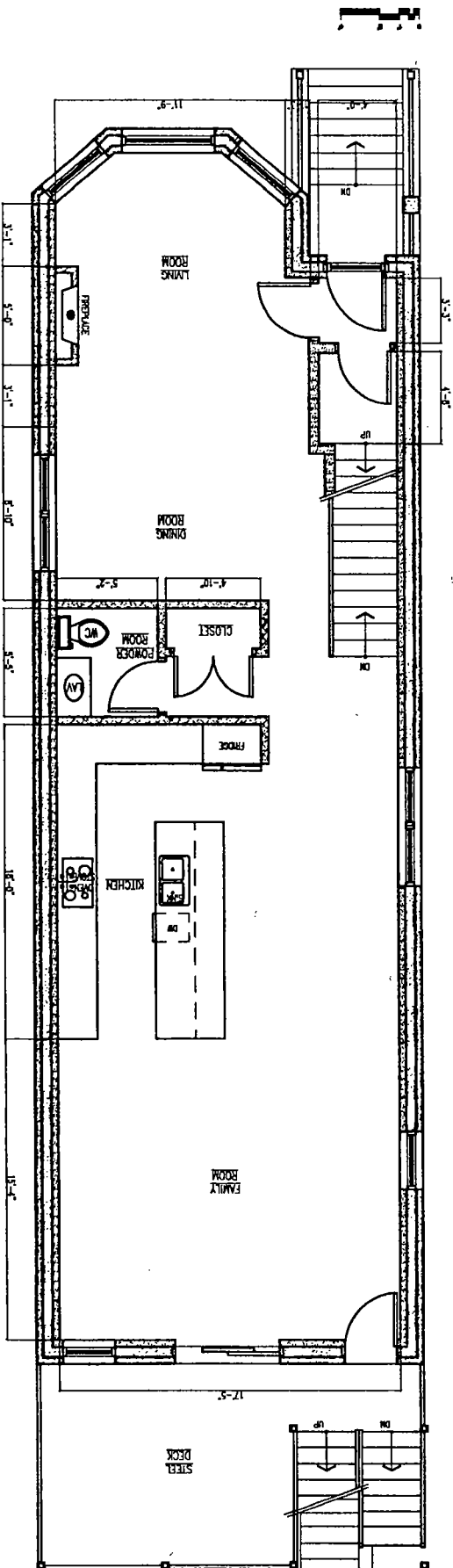
This is a detailed floor plan of a three-bedroom house. The layout includes the following rooms and features:

- Bedroom #1:** Located at the top left, measuring 11'-9" wide by 10'-2" deep. It features a bay window.
- Master Bedroom:** Located in the center, measuring 11'-9" wide by 10'-2" deep. It includes a master bathroom with a tub, shower, and toilet, and a walk-in closet (W.C.).
- Bedroom #2:** Located in the center-right, measuring 11'-2" wide by 10'-10" deep. It has a closet.
- Bedroom #3:** Located at the bottom right, measuring 12'-1" wide by 11'-8" deep. It includes a closet.
- Bathrooms:** In addition to the master bathroom, there is a Jack & Jill bath between Bedroom #2 and Bedroom #3, and a full bathroom near Bedroom #1.
- Kitchen and Dining Area:** Located on the right side, featuring a kitchen with a sink, stove, and refrigerator, and an adjacent dining area.
- Living Area:** Located on the left side, featuring a fireplace and a large window.
- Staircases:** Two staircases are shown, one labeled "UP" and another labeled "DOWN".
- Other Features:** The plan includes a front porch, a rear porch, and a central hallway connecting the rooms.

**3124 N CENTRAL PARK, CHICAGO, IL
NEW 3 FLOOR 3 DWELLING UNITS BRICK BUILDING**

FINAL FOR PUBLICATION

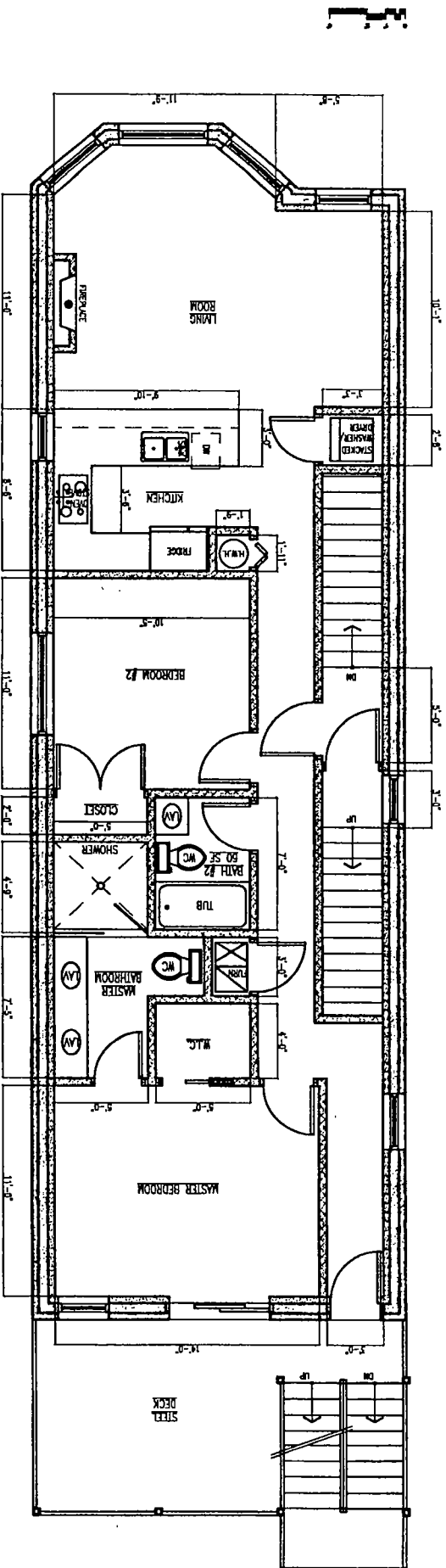
1 FIRST FLOOR PLAN
A-3 SCALE: 3/16" = 1'-0"



3124 N CENTRAL PARK, CHICAGO, IL
NEW 3 FLOOR 3 DWELLING UNITS BRICK BUILDING

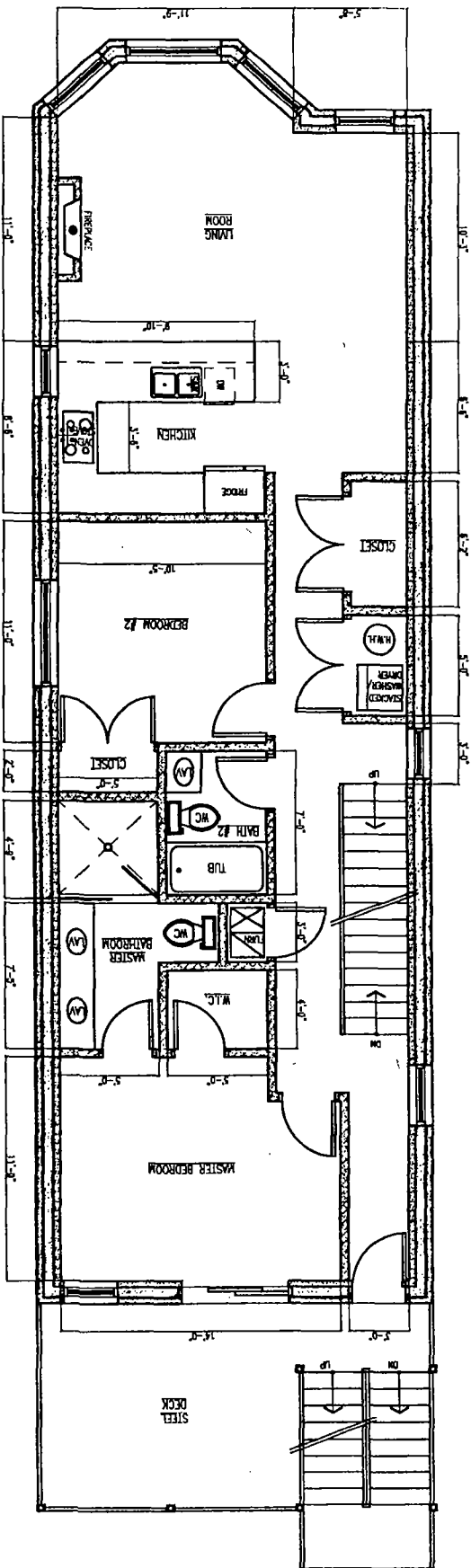
FINAL FOR PUBLICATION

1 SECOND FLOOR PLAN
A-4 / SCALE 3/16" = 1'-0"



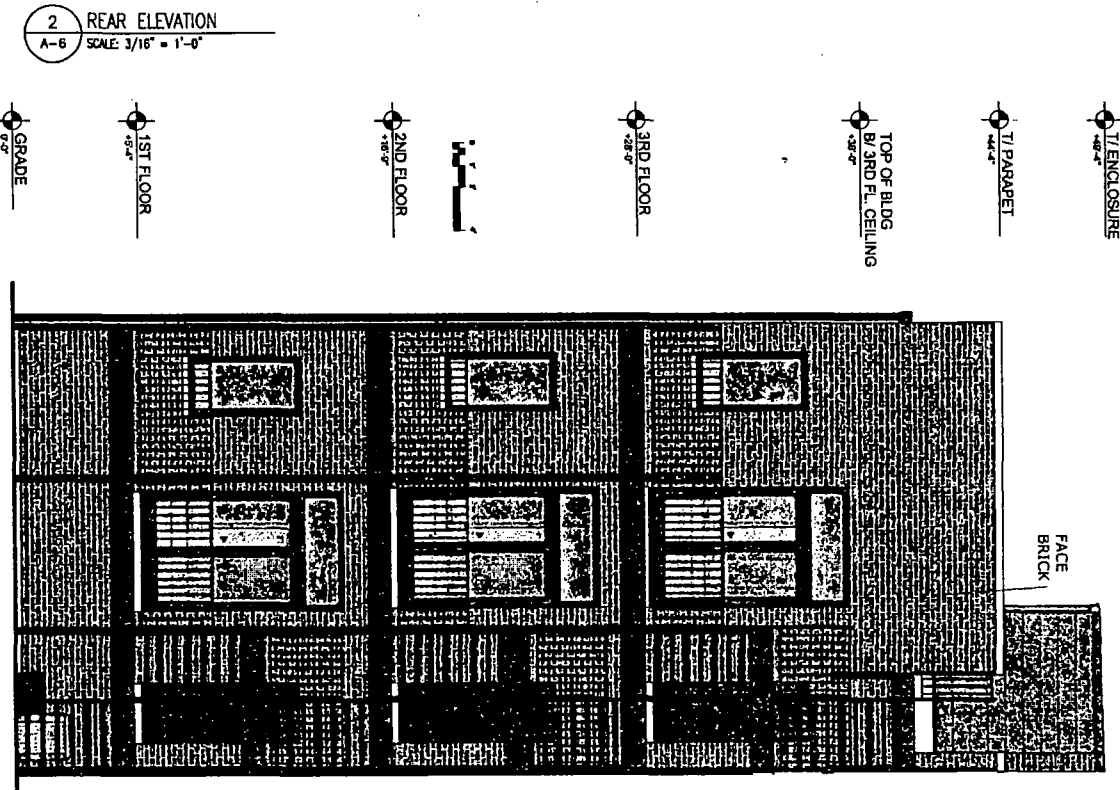
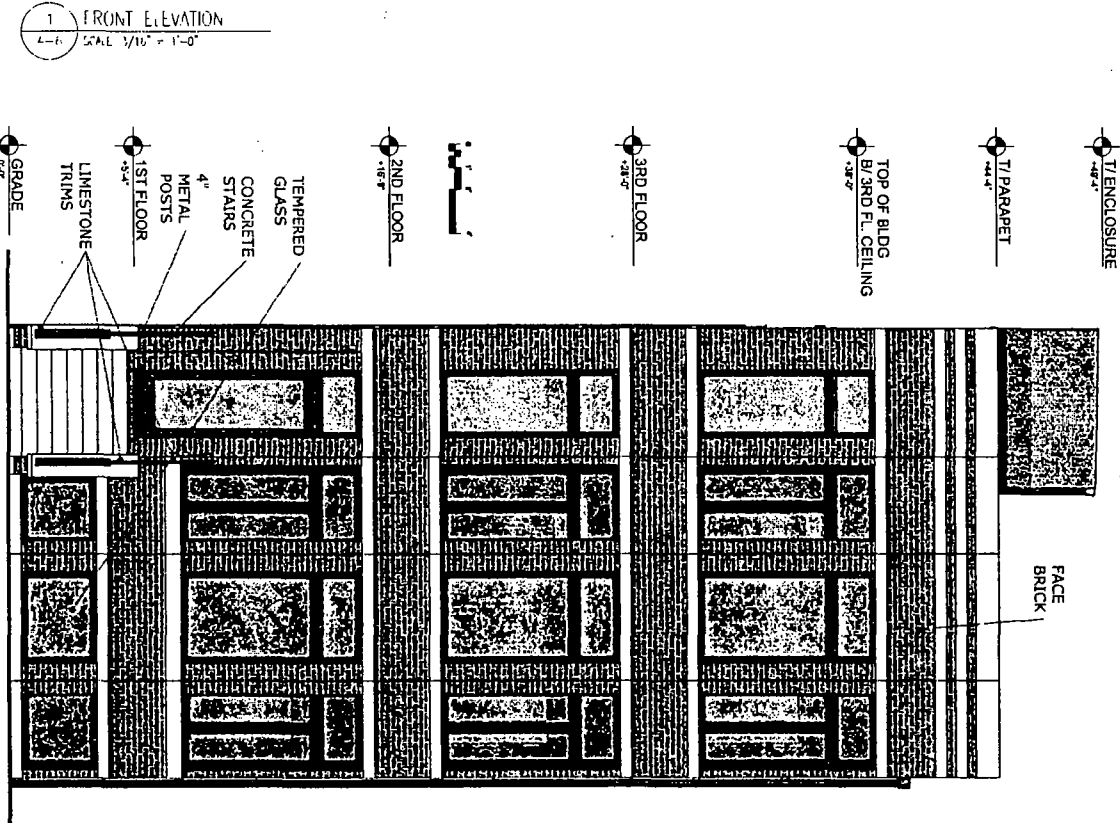
3124 N CENTRAL PARK, CHICAGO, IL
NEW 3 FLOOR 3 DWELLING UNITS BRICK BUILDING

A circle with a horizontal diameter. Two chords are drawn from the left endpoint of the diameter to the upper and lower arcs of the circle, forming a triangle with the left radius. The left radius is labeled with the letter 'z'.



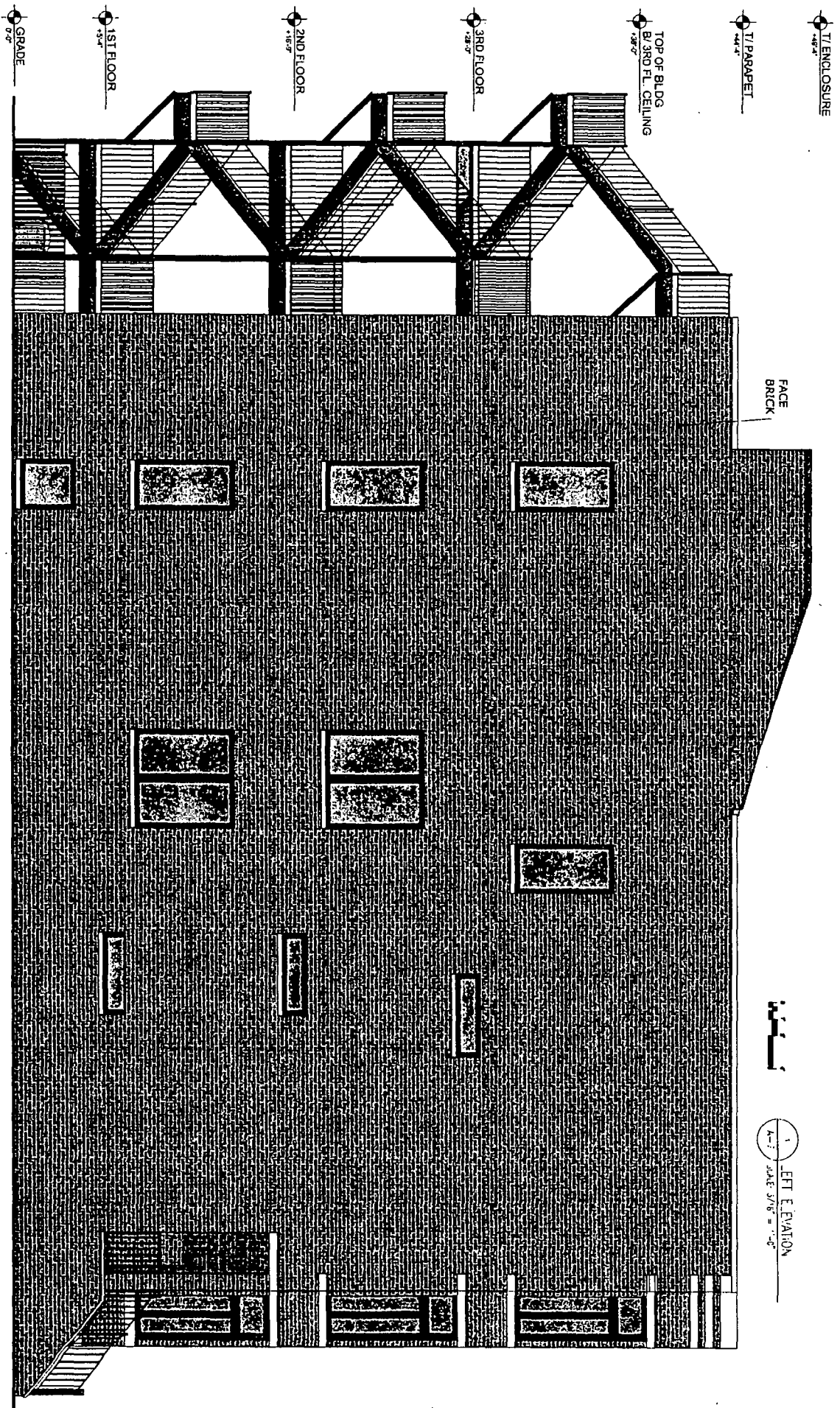
**3124 N CENTRAL PARK, CHICAGO, IL
NEW 3 FLOOR 3 DWELLING UNITS BRICK BUILDING**

FINAL FOR PUBLICATION



3124 N CENTRAL PARK, CHICAGO, IL
NEW 3 FLOOR 3 DWELLING UNITS BRICK BUILDING

FINAL FOR PUBLICATION



3124 N CENTRAL PARK, CHICAGO, IL
NEW 3 FLOOR 3 DWELLING UNITS BRICK BUILDING

FINAL FOR PUBLICATION

