



City of Chicago



O2019-4364

Office of the City Clerk

Document Tracking Sheet

Meeting Date:	6/12/2019
Sponsor(s):	Hopkins (2)
Type:	Ordinance
Title:	Grant(s) of privilege in public way for Steinway, Inc.
Committee(s) Assignment:	Committee on Transportation and Public Way

ORDINANCE
STEINWAY, INC.
Acct. No. 409939 - 2
Permit No. 1138181

Be It Ordained by the City Council of the City of Chicago:

SECTION 1. Permission and authority are hereby given and granted to STEINWAY, INC., upon the terms and subject to the conditions of this ordinance to maintain and use one (1) sign(s) projecting over the public right-of-way attached to its premises known as 1960 N. Clybourn Ave..

Said sign structure(s) measures as follows; along N CLYBOURN AVE:

One (1) at two (2) feet in length, twelve (12) feet in height and ten point zero eight (10.08) feet above grade level.

The location of said privilege shall be as shown on prints kept on file with the Department of Business Affairs and Consumer Protection and the Office of the City Clerk.

Said privilege shall be constructed in accordance with plans and specifications approved by the Department of Transportation (Division of Project Development) and Zoning Department - Signs.

This grant of privilege in the public way shall be subject to the provisions of Section 10-28-015 and all other required provisions of the Municipal Code of Chicago.

The grantee shall ~~pay to the~~ City of Chicago as compensation for the privilege #1138181 herein granted the sum of one hundred (\$100.00) per annum in advance.

A 25% penalty will be added for payments received after due date.

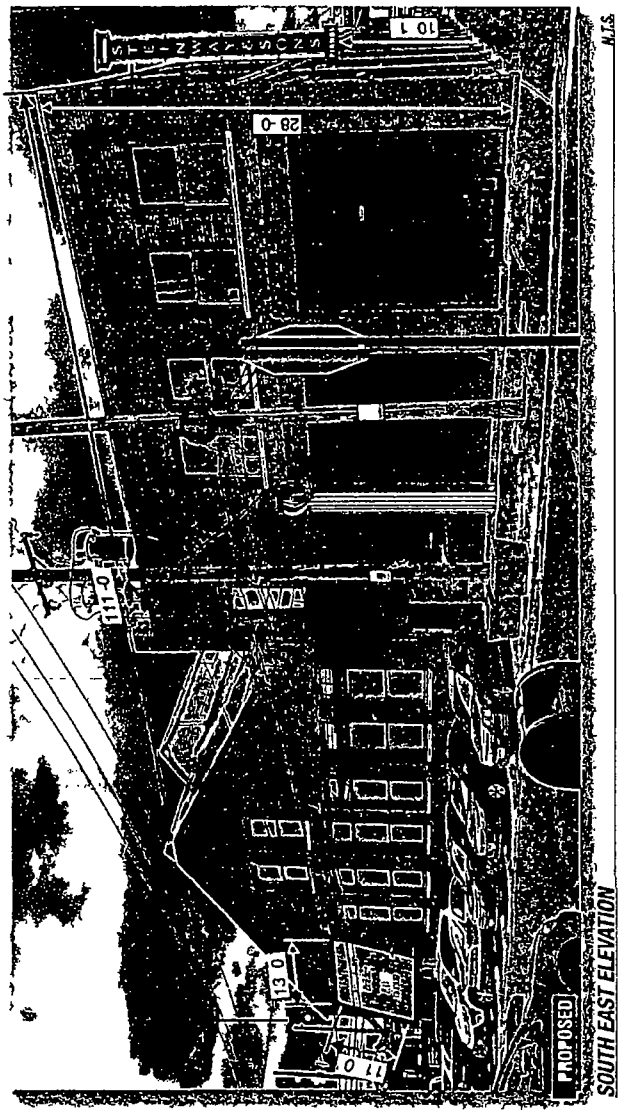
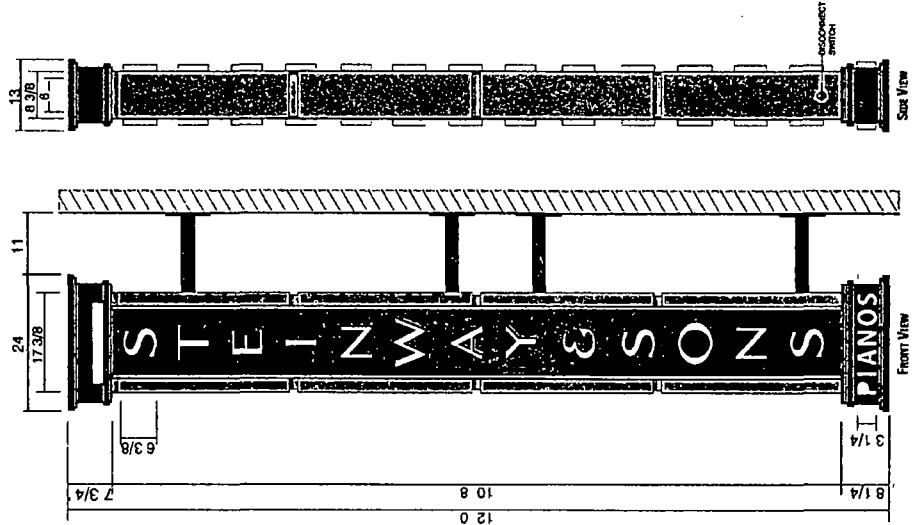
The permit holder agrees to hold the City of Chicago harmless for any damage, relocation or replacement costs associated with damage, relocation or removal of private property caused by the City performing work in the public way.

Authority herein given and granted for a period of five (5) years from and after Date of Passage.

Alderman



Brian Hopkins 2nd Ward



1/2" = 1'-0"

U.L. #E136187
SIGN WEIGHT 210 LBS
VOLT AMP LOAD 180.277V
BRANCH CIRCUIT(S) 1 EXISTING
TOTAL WATTAGE 60 WATTS
POWER SUPPLY(S) 2 SUPPLIES

ITEM	DESCRIPTION	QUANTITY	UNIT	PRICE	TOTAL
1	Sign Structure	1	Each	1800.00	1800.00
2	Sign Blade	1	Each	1200.00	1200.00
3	Sign Post	1	Each	1000.00	1000.00
4	Sign Hardware	1	Each	500.00	500.00
5	Sign Electrical	1	Each	300.00	300.00
6	Sign Fabrication	1	Each	200.00	200.00
7	Sign Installation	1	Each	100.00	100.00
8	Sign Maintenance	1	Each	50.00	50.00
9	Sign Signage	1	Each	25.00	25.00
10	Sign Signage	1	Each	25.00	25.00
11	Sign Signage	1	Each	25.00	25.00
12	Sign Signage	1	Each	25.00	25.00
13	Sign Signage	1	Each	25.00	25.00
14	Sign Signage	1	Each	25.00	25.00
15	Sign Signage	1	Each	25.00	25.00
16	Sign Signage	1	Each	25.00	25.00
17	Sign Signage	1	Each	25.00	25.00
18	Sign Signage	1	Each	25.00	25.00
19	Sign Signage	1	Each	25.00	25.00
20	Sign Signage	1	Each	25.00	25.00
21	Sign Signage	1	Each	25.00	25.00
22	Sign Signage	1	Each	25.00	25.00
23	Sign Signage	1	Each	25.00	25.00
24	Sign Signage	1	Each	25.00	25.00
25	Sign Signage	1	Each	25.00	25.00
26	Sign Signage	1	Each	25.00	25.00
27	Sign Signage	1	Each	25.00	25.00
28	Sign Signage	1	Each	25.00	25.00
29	Sign Signage	1	Each	25.00	25.00
30	Sign Signage	1	Each	25.00	25.00
31	Sign Signage	1	Each	25.00	25.00
32	Sign Signage	1	Each	25.00	25.00
33	Sign Signage	1	Each	25.00	25.00
34	Sign Signage	1	Each	25.00	25.00
35	Sign Signage	1	Each	25.00	25.00
36	Sign Signage	1	Each	25.00	25.00
37	Sign Signage	1	Each	25.00	25.00
38	Sign Signage	1	Each	25.00	25.00
39	Sign Signage	1	Each	25.00	25.00
40	Sign Signage	1	Each	25.00	25.00
41	Sign Signage	1	Each	25.00	25.00
42	Sign Signage	1	Each	25.00	25.00
43	Sign Signage	1	Each	25.00	25.00
44	Sign Signage	1	Each	25.00	25.00
45	Sign Signage	1	Each	25.00	25.00
46	Sign Signage	1	Each	25.00	25.00
47	Sign Signage	1	Each	25.00	25.00
48	Sign Signage	1	Each	25.00	25.00
49	Sign Signage	1	Each	25.00	25.00
50	Sign Signage	1	Each	25.00	25.00
51	Sign Signage	1	Each	25.00	25.00
52	Sign Signage	1	Each	25.00	25.00
53	Sign Signage	1	Each	25.00	25.00
54	Sign Signage	1	Each	25.00	25.00
55	Sign Signage	1	Each	25.00	25.00
56	Sign Signage	1	Each	25.00	25.00
57	Sign Signage	1	Each	25.00	25.00
58	Sign Signage	1	Each	25.00	25.00
59	Sign Signage	1	Each	25.00	25.00
60	Sign Signage	1	Each	25.00	25.00
61	Sign Signage	1	Each	25.00	25.00
62	Sign Signage	1	Each	25.00	25.00
63	Sign Signage	1	Each	25.00	25.00
64	Sign Signage	1	Each	25.00	25.00
65	Sign Signage	1	Each	25.00	25.00
66	Sign Signage	1	Each	25.00	25.00
67	Sign Signage	1	Each	25.00	25.00
68	Sign Signage	1	Each	25.00	25.00
69	Sign Signage	1	Each	25.00	25.00
70	Sign Signage	1	Each	25.00	25.00
71	Sign Signage	1	Each	25.00	25.00
72	Sign Signage	1	Each	25.00	25.00
73	Sign Signage	1	Each	25.00	25.00
74	Sign Signage	1	Each	25.00	25.00
75	Sign Signage	1	Each	25.00	25.00
76	Sign Signage	1	Each	25.00	25.00
77	Sign Signage	1	Each	25.00	25.00
78	Sign Signage	1	Each	25.00	25.00
79	Sign Signage	1	Each	25.00	25.00
80	Sign Signage	1	Each	25.00	25.00
81	Sign Signage	1	Each	25.00	25.00
82	Sign Signage	1	Each	25.00	25.00
83	Sign Signage	1	Each	25.00	25.00
84	Sign Signage	1	Each	25.00	25.00
85	Sign Signage	1	Each	25.00	25.00
86	Sign Signage	1	Each	25.00	25.00
87	Sign Signage	1	Each	25.00	25.00
88	Sign Signage	1	Each	25.00	25.00
89	Sign Signage	1	Each	25.00	25.00
90	Sign Signage	1	Each	25.00	25.00
91	Sign Signage	1	Each	25.00	25.00
92	Sign Signage	1	Each	25.00	25.00
93	Sign Signage	1	Each	25.00	25.00
94	Sign Signage	1	Each	25.00	25.00
95	Sign Signage	1	Each	25.00	25.00
96	Sign Signage	1	Each	25.00	25.00
97	Sign Signage	1	Each	25.00	25.00
98	Sign Signage	1	Each	25.00	25.00
99	Sign Signage	1	Each	25.00	25.00
100	Sign Signage	1	Each	25.00	25.00

Customer's Signature _____ Date _____

Comments: _____

job# 18 7453
10-19 18
rev # 11 19

drawn by: Dan S

STEINWAY PIANO
1960 N CLYBOURN CHICAGO IL

OLYMPIK SIGNS
1150 N. Garland
Lombard, IL 60148 Ph: 630.424.6100 Fx: 630.424.6120 WWW.OLYSIGNS.COM

None of our products, components, materials or accessories are made in or from the U.S. or Canada. Components are imported from various countries. We are not responsible for any damage to property or equipment caused by the use of our products. All other trademarks are the property of their respective owners.

page 1 of 2



06/12/2019

Alderman **Brian Hopkins**
Ward # 02
City of Chicago
City Hall, Room 200
121 North LaSalle Street
Chicago, Illinois 60602

Re: An ordinance to use and maintain a portion of the public right-of-way for **one (1) sign(s)** for **STEINWAY, INC.**, adjacent to the premises known as **1960 N. Clybourn Ave.**.

Dear Alderman **Brian Hopkins**:

The applicant referenced above has requested the use of the public right-of-way for a **sign(s)**. An ordinance has been prepared by the Department of Business Affairs and Consumer Protection – Small Business Center - Public Way Use Unit for presentation to the City Council. Because this request was made for properties located in your ward, ~~as approved~~ by you as per the attached, I respectfully request that you introduce the attached ordinance at the next City Council meeting.

If you have any questions regarding this ordinance, please contact Anthony Bertuca at (312) 744-5506.

Department of Business Affairs and Consumer Protection