



City of Chicago



O2020-4258

Office of the City Clerk

Document Tracking Sheet

Meeting Date:	9/9/2020
Sponsor(s):	Cardona, Jr. (31)
Type:	Ordinance
Title:	Grant(s) of privilege in public way for Metro by T-Mobile
Committee(s) Assignment:	Committee on Transportation and Public Way

ORDINANCE
METRO BY T-MOBILE
Acct. No. 460063 - 1
Permit No. 1146182

Be It Ordained by the City Council of the City of Chicago:

SECTION 1. Permission and authority are hereby given and granted to METRO BY T-MOBILE, upon the terms and subject to the conditions of this ordinance to maintain and use one (1) sign(s) projecting over the public right-of-way attached to its premises known as 5603 W. Belmont Ave..

Said sign structure(s) measures as follows; along W. Belmont Avenue:

One (1) at twelve point five eight (12.58) feet in length, one point six seven (1.67) feet in height and ten (10) feet above grade level.

The location of said privilege shall be as shown on prints kept on file with the Department of Business Affairs and Consumer Protection and the Office of the City Clerk.

Said privilege shall be constructed in accordance with plans and specifications approved by the Department of Transportation (Division of Project Development) and Zoning Department - Signs.

This grant of privilege in the public way shall be subject to the provisions of Section 10-28-015 and all other required provisions of the Municipal Code of Chicago.

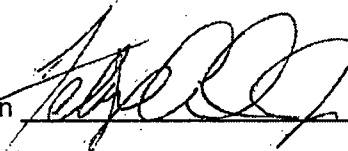
The grantee shall pay to the City of Chicago as compensation for the privilege #1146182 herein granted the sum of one hundred (\$100.00) per annum in advance.

A 25% penalty will be added for payments received after due date.

The permit holder agrees to hold the City of Chicago harmless for any damage, relocation or replacement costs associated with damage, relocation or removal of private property caused by the City performing work in the public way.

Authority herein given and granted for a period of five (5) years from and after Date of Passage.

Alderman



Felix Cardona Jr. 31st Ward

EXISTING PHOTO - SIGN A

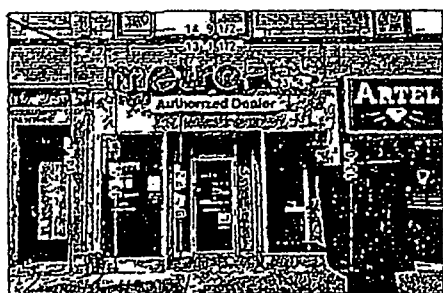
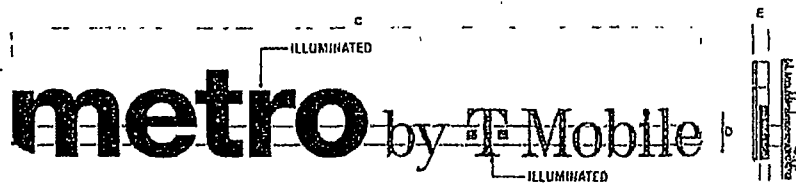


PHOTO ENHANCEMENT - SIGN A



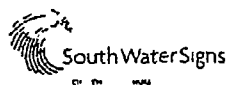
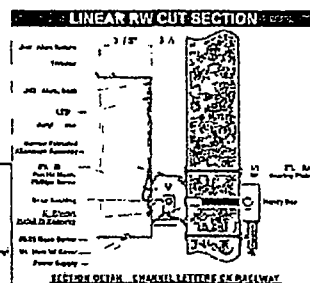
Illuminated Linear Channel Letters On Raceway

SPECIFICATIONS

Metro and comma
FACES 118 OPTIX 34MLD DIFFUSER ACRYLIC W/ PERFORATED HIRATEC FILM #47902 1 DEEP PURPLE DR ARLOH DEEP PURPLE DUAL COLOR FILM #1597-45564085557
RETURNS 649 8 5 3 ALUMINUM COIL PAINTED WHITE
BACKS 653 ALUMINUM
TRIM CAP 1 WHITE JEWELITE
ILLUMINATION SLOAN PRISM 6500K OR PRINCIPAL LEDS
by T Mobile
FACES 118 OPTIX 34MLD DIFFUSER ACRYLIC W/ TRANSLUCENT HIRATEC FILM #35532 1 MAGENTA DR ARLOH TRANSLUCENT MAGENTA FILM #5456-4557948155436
RETURNS 649 8 5 3 ALUMINUM COIL PAINTED MATTHEWS MP 65055 MAGENTA
BACKS 653 ALUMINUM
TRIM CAP 1 JEWELITE PAINTED MATTHEWS MP 65055 MAGENTA
ILLUMINATION SLOAN PRISM 6500K OR PRINCIPAL LEDS
5 NARROW RACEWAY
SIDE 5 5/8" COMP EXTRUDED NARROW RACEWAY
COLOR PAINT TO MATCH FASCIA

SIGNMENT	A	B	C	D	E	F	G	H
MAIN CLWRP 154	1 3	1 2 5/8	12 4 1/4	10 3/4	5	3	20 48	

- 10451122741
- 1. Material: 1/2" Thick
 - 2. Material: 1/2" Thick
 - 3. Material: 1/2" Thick
 - 4. Material: 1/2" Thick
 - 5. Material: 1/2" Thick
 - 6. Material: 1/2" Thick
 - 7. Material: 1/2" Thick
 - 8. Material: 1/2" Thick
 - 9. Material: 1/2" Thick
 - 10. Material: 1/2" Thick
 - 11. Material: 1/2" Thick
 - 12. Material: 1/2" Thick
 - 13. Material: 1/2" Thick
 - 14. Material: 1/2" Thick
 - 15. Material: 1/2" Thick
 - 16. Material: 1/2" Thick
 - 17. Material: 1/2" Thick
 - 18. Material: 1/2" Thick
 - 19. Material: 1/2" Thick
 - 20. Material: 1/2" Thick
 - 21. Material: 1/2" Thick
 - 22. Material: 1/2" Thick
 - 23. Material: 1/2" Thick
 - 24. Material: 1/2" Thick
 - 25. Material: 1/2" Thick
 - 26. Material: 1/2" Thick
 - 27. Material: 1/2" Thick
 - 28. Material: 1/2" Thick
 - 29. Material: 1/2" Thick
 - 30. Material: 1/2" Thick
 - 31. Material: 1/2" Thick
 - 32. Material: 1/2" Thick
 - 33. Material: 1/2" Thick
 - 34. Material: 1/2" Thick
 - 35. Material: 1/2" Thick
 - 36. Material: 1/2" Thick
 - 37. Material: 1/2" Thick
 - 38. Material: 1/2" Thick
 - 39. Material: 1/2" Thick
 - 40. Material: 1/2" Thick
 - 41. Material: 1/2" Thick
 - 42. Material: 1/2" Thick
 - 43. Material: 1/2" Thick
 - 44. Material: 1/2" Thick
 - 45. Material: 1/2" Thick
 - 46. Material: 1/2" Thick
 - 47. Material: 1/2" Thick
 - 48. Material: 1/2" Thick
 - 49. Material: 1/2" Thick
 - 50. Material: 1/2" Thick
 - 51. Material: 1/2" Thick
 - 52. Material: 1/2" Thick
 - 53. Material: 1/2" Thick
 - 54. Material: 1/2" Thick
 - 55. Material: 1/2" Thick
 - 56. Material: 1/2" Thick
 - 57. Material: 1/2" Thick
 - 58. Material: 1/2" Thick
 - 59. Material: 1/2" Thick
 - 60. Material: 1/2" Thick
 - 61. Material: 1/2" Thick
 - 62. Material: 1/2" Thick
 - 63. Material: 1/2" Thick
 - 64. Material: 1/2" Thick
 - 65. Material: 1/2" Thick
 - 66. Material: 1/2" Thick
 - 67. Material: 1/2" Thick
 - 68. Material: 1/2" Thick
 - 69. Material: 1/2" Thick
 - 70. Material: 1/2" Thick
 - 71. Material: 1/2" Thick
 - 72. Material: 1/2" Thick
 - 73. Material: 1/2" Thick
 - 74. Material: 1/2" Thick
 - 75. Material: 1/2" Thick
 - 76. Material: 1/2" Thick
 - 77. Material: 1/2" Thick
 - 78. Material: 1/2" Thick
 - 79. Material: 1/2" Thick
 - 80. Material: 1/2" Thick
 - 81. Material: 1/2" Thick
 - 82. Material: 1/2" Thick
 - 83. Material: 1/2" Thick
 - 84. Material: 1/2" Thick
 - 85. Material: 1/2" Thick
 - 86. Material: 1/2" Thick
 - 87. Material: 1/2" Thick
 - 88. Material: 1/2" Thick
 - 89. Material: 1/2" Thick
 - 90. Material: 1/2" Thick
 - 91. Material: 1/2" Thick
 - 92. Material: 1/2" Thick
 - 93. Material: 1/2" Thick
 - 94. Material: 1/2" Thick
 - 95. Material: 1/2" Thick
 - 96. Material: 1/2" Thick
 - 97. Material: 1/2" Thick
 - 98. Material: 1/2" Thick
 - 99. Material: 1/2" Thick
 - 100. Material: 1/2" Thick



South Water Signs #
7040916

metro
by T-Mobile

ADDRESS 5603 W 18 Ave 1A
Ch 8 IL 60614

PAGE #
3

CLIENT SIGNATURE

DATE

04 15 20

SITE ID

39445

DESIGN

SWD Design

FILE NAME

10451122741

REVISIONS

DATE

DESCRIPTION



09/09/2020

Alderman **Felix Cardona Jr.**
Ward # 31
City of Chicago
City Hall, Room 300
121 North LaSalle Street
Chicago, Illinois 60602

Re: An ordinance to use and maintain a portion of the public right-of-way for **one (1) sign(s)** for **METRO BY T-MOBILE**, adjacent to the premises known as **5603 W. Belmont Ave.**

Dear Alderman **Felix Cardona Jr.**:

The applicant referenced above has requested the use of the public right-of-way for a **sign(s)**. An ordinance has been prepared by the Department of Business Affairs and Consumer Protection – Small Business Center - Public Way Use Unit for presentation to the City Council. Because this request was made for properties located in your ward, as approved by you as per the attached, I respectfully request that you introduce the attached ordinance at the next City Council meeting.

If you have any questions regarding this ordinance, please contact Anthony Bertuca at (312) 744-5506.

Department of Business Affairs and Consumer Protection