



City of Chicago



Or2021-270

Office of the City Clerk

Document Tracking Sheet

Meeting Date:	10/14/2021
Sponsor(s):	Reilly (42)
Type:	Order
Title:	Issuance of permits for sign(s)/signboard(s) at 300 N Michigan
Committee(s) Assignment:	Committee on Zoning, Landmarks and Building Standards

CITY COUNCIL
COMMITTEE ON ZONING, LANDMARKS AND BUILDING STANDARDS

COUNCIL ORDER

RE: Approval of sign over 100 square feet in area or over 24 feet above grade

ORDERED, that the City Council hereby approves the following sign application submitted by:

Applicant*: 300 N. MICHIGAN, LLC

(* The Applicant is the owner of the real property or the business tenant of the real property. Do not list the sign contractor, sign erector, sign company or advertising entity in the above space.)

This Order approves the following sign in accordance with Municipal Code of Chicago Section 13-20-680:

Address of Sign: 300 N. MICHIGAN AVENUE CHICAGO IL 60601 Chicago, IL 60601

Zoning District: PD 1453

DOB Sign Permit Application #: 100938400

Sign Details:

1. On-premise OR Off-premise

2. Static sign OR Dynamic-image display sign

3. Number of sign faces 1

4. Projecting over the public way (Yes or No) If yes, Public Way Use #: BACP1587667

5. Dimensions: Length 4 feet 8 inches Height 6 feet 7.5 inches

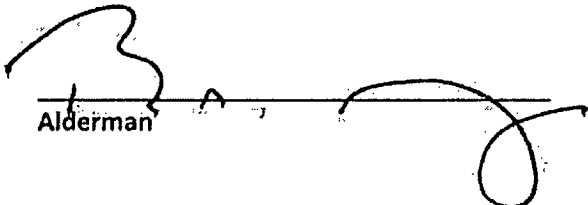
Total square feet in area: 31 feet 0 inches

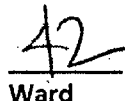
6. Height above grade: 70 feet 0 inches

7. Elevation (side of building or lot where the sign will be erected): NORTH MICHIGAN AVENUE

8. Name of Sign Contractor/Erector: POBLOCKI SIGN COMPANY

To be legal, such sign shall comply with all provisions of Title 17 of the Chicago Municipal Code ("Zoning Ordinance") and all other provisions of the Municipal Code governing the permitting, construction and maintenance and removal of signs and sign structures. Failure of the applicant and the applicant's successors to comply shall be grounds for invalidation or revocation of the sign permit.


Alderman


Ward

POBLOCKI & ASSOCIATES, INC. is a registered Professional Engineering Firm in the State of Wisconsin. The firm is a member of the National Society of Professional Engineers (NSPE) and the National Electrical Contractors Association (NECA). The firm is also a member of the International Brotherhood of Electrical Workers (IBEW) Local 1000. The firm is a member of the National Fire Protection Association (NFPA) and the National Safety Council. The firm is a member of the National Association of Professional Engineers (NAPE) and the National Association of Professional Engineers and Surveyors (NAPE&S). The firm is a member of the National Association of Professional Engineers and Surveyors (NAPE&S) and the National Association of Professional Engineers and Surveyors (NAPE&S).

Project

Citizen M Hotel
Chicago, IL

Scale: 3/4"=1'
Original Page Size: 11" x 17"

Notes

SURVEY REQUIRED

VERIFY COLOR OF GLAZINGS ON BUILDING

Revisions

REV.	DATE	DESCRIPTION
01	01.13.21	Backer panel
02	01.19.21	Panel / cutout
03	02.23.21	Size
04	04.20.21	Installation
05	05.07.21	Specs
06	05.26.21	Notes

Rev: Erik Curry
Drawn by: Jason Harkness
Orig. Date: 6/18/20

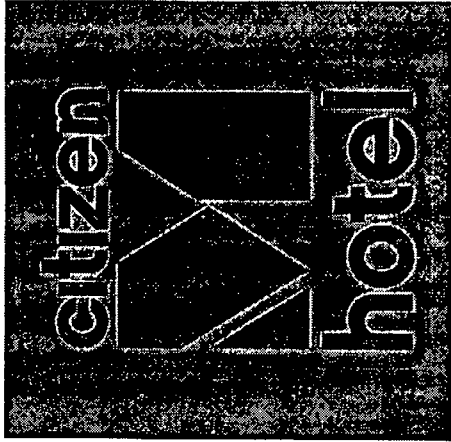
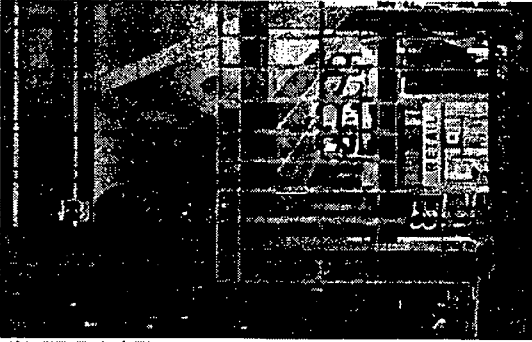
Sign Location

LL-01

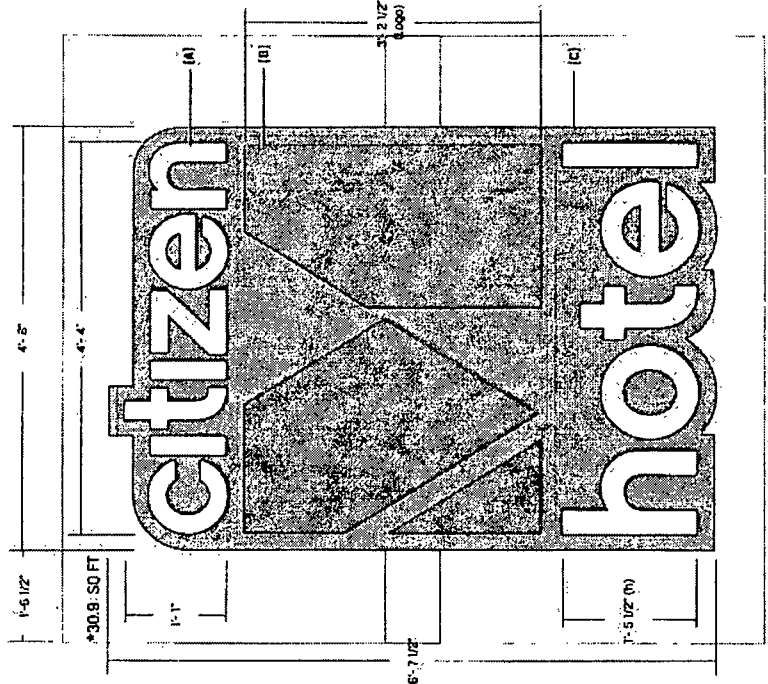
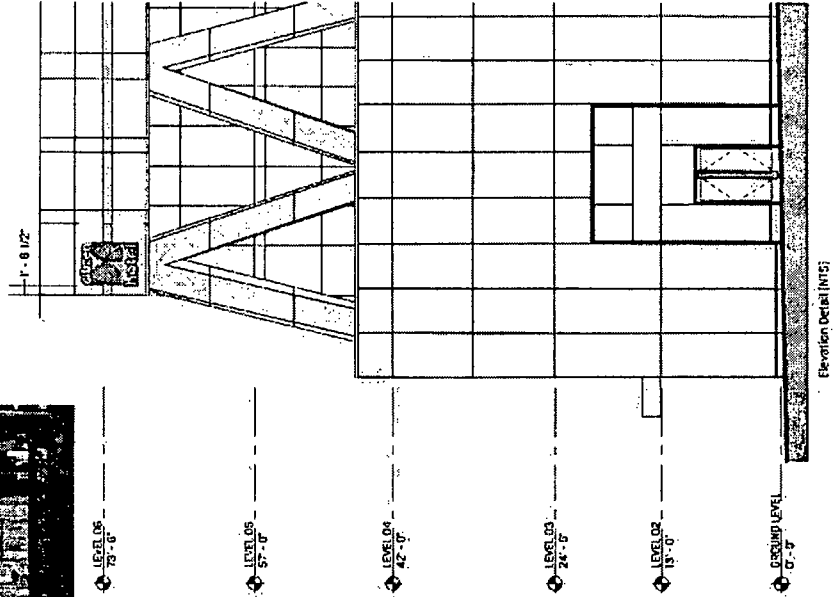
Lit Letters
Sign Type

87272
Project - Job No.

J01
Design



Proposed Night View [NFS]



SIGN SPECIFICATIONS

(A) - ILLUMINATED LETTERS

Lighting: LED 6500K
Voltage: 120/277V
Dimmer Required
Description: Back-Lit (Remode), Aluminum
Face Color: White
Return Color: Black
Installation: Stand-off, 1 1/2" Paint Black
Mounted to Backer Panel

(B) - ILLUMINATED LOGO

Lighting: LED 6500K
Voltage: 120/277V
Dimmer Required
Description: Back-Lit (Remode)
Face Color: Paint To Match PMS Rec 199c
Return Color: Black
Installation: Stand-off, 1 1/2" Paint Black
Mounted to Backer Panel

(C) - BACKER PANEL

Material: 080 Aluminum
Color: Paint to Match Glazing on Building
[T80] - Suede Finish
Installation: Mount to Steel Support Structure (provided by others)

