



City of Chicago



SO2021-1087

Office of the City Clerk

Document Tracking Sheet

Meeting Date:	3/24/2021
Sponsor(s):	Misc. Transmittal
Type:	Ordinance
Title:	Zoning Reclassification Map No. 3-1 at 1535 N Maplewood Ave - App No. 20642T1
Committee(s) Assignment:	Committee on Zoning, Landmarks and Building Standards

ORDINANCE

BE IT ORDAINED BY THE CITY COUNCIL OF THE CITY OF CHICAGO:

SECTION 1. Title 17 of the Municipal Code of Chicago, the Chicago Zoning Ordinance, is hereby amended by changing all of the RS-3 Residential Single-Unit (Detached House) District symbols and Indications as shown on Map No. 3-1 in the area bounded by

A line 216 feet south of and parallel to West North Avenue; And the public alley next east of and parallel to North Maplewood Avenue; A line 241 feet south of and parallel to West North Avenue; And North Maplewood Avenue;

To those of a RM-4.5 Residential Multi-Unit District

SECTION 2. This ordinance shall be in force and effect from and after its passage and due publication.

Common Address of Property: 1535 North Maplewood Avenue

ZONING NARRATIVE AND PLANS
AMENDED TO BE A TYPE-1
ZONING MAP AMENDMENT AT
1535 NORTH MAPLEWOOD AVENUE
FILE# 20642

Applicant seeks a map amendment from RS-3 Residential Single-Unit (Detached House) District to that of a RM-4.5 Residential Multi-Unit District in order to establish a proposed 3rd floor addition and two additional dwelling units to an existing two-story, two-dwelling unit with basement for a total of 4 dwelling unit building. Subject lot is 3,154.38 sq. ft. with three open off-street parking spaces at the rear of the property.

- Lot Area: 3,154.38 sq. ft.
- Floor Area Ratio: 1.374 proposed FAR
- Building Size: 4,335 sq. ft.
- Density (lot area per dwelling unit): four units at 788.5 sq. ft.
- Off-Street Parking Spaces: Three off-street parking spaces at the rear of the property.
- Setbacks: Front Yard = 7.33 ft. to stairs, no change to face of building

Side Yard = 0.00 ft. south side
2.645 ft. north side

Rear Yard = 29.416 ft.

- Building Height: 41 ft. top of parapet

Final for Publication

NO.	REVISION	DATE
1	ISSUED FOR PERMIT	04/05/21
2	REVISED PER COMMENTS	04/05/21
3	REVISED PER COMMENTS	04/05/21

THIS PLAN AND ALL INFORMATION HEREON ARE THE PROPERTY OF CHICAGOLAND SURVEY COMPANY INC. AND ARE NOT TO BE REPRODUCED OR TRANSMITTED IN ANY FORM OR BY ANY MEANS, ELECTRONIC OR MECHANICAL, INCLUDING PHOTOCOPYING, RECORDING, OR BY ANY INFORMATION STORAGE AND RETRIEVAL SYSTEM, WITHOUT THE WRITTEN PERMISSION OF CHICAGOLAND SURVEY COMPANY INC. ANY REPRODUCTION OR TRANSMISSION OF THIS PLAN OR INFORMATION HEREON WITHOUT THE WRITTEN PERMISSION OF CHICAGOLAND SURVEY COMPANY INC. IS STRICTLY PROHIBITED. CHICAGOLAND SURVEY COMPANY INC. IS NOT RESPONSIBLE FOR ANY ERRORS OR OMISSIONS IN THIS PLAN OR INFORMATION HEREON. THE USER OF THIS PLAN OR INFORMATION HEREON IS ADVISED THAT THE USER SHALL BE RESPONSIBLE FOR OBTAINING ALL NECESSARY PERMITS AND APPROVALS FROM THE APPROPRIATE AGENCIES AND OFFICIALS. CHICAGOLAND SURVEY COMPANY INC. IS NOT A PROFESSIONAL ENGINEER OR ARCHITECT. THIS PLAN IS FOR INFORMATIONAL PURPOSES ONLY AND IS NOT TO BE USED AS A BASIS FOR ANY LEGAL ACTION.

MULTIFAMILY RESIDENCE
 1535 N. MAPLEWOOD AVE, CHICAGO, ILLINOIS, 60622



SITE PLAN & PLAT OF SURVEY
 DRAWN BY: [Name]
 DATE: [Date]
 PROJECT NO.: [Number]
 SHEET NO.: [Number]

CHICAGOLAND SURVEY COMPANY INC.
 1535 N. MAPLEWOOD AVE, CHICAGO, ILLINOIS 60622
 (773) 271-4447
 CHICAGOLANDSURVEY.COM

PLAT OF SURVEY

LOT 14, 15, 16, 17, 18, 19, 20, 21, 22, 23, 24, 25, 26, 27, 28, 29, 30, 31, 32, 33, 34, 35, 36, 37, 38, 39, 40, 41, 42, 43, 44, 45, 46, 47, 48, 49, 50, 51, 52, 53, 54, 55, 56, 57, 58, 59, 60, 61, 62, 63, 64, 65, 66, 67, 68, 69, 70, 71, 72, 73, 74, 75, 76, 77, 78, 79, 80, 81, 82, 83, 84, 85, 86, 87, 88, 89, 90, 91, 92, 93, 94, 95, 96, 97, 98, 99, 100

REVISIONS

1. ISSUED FOR PERMIT

2. REVISED PER COMMENTS

3. REVISED PER COMMENTS

4. REVISED PER COMMENTS

5. REVISED PER COMMENTS

6. REVISED PER COMMENTS

7. REVISED PER COMMENTS

8. REVISED PER COMMENTS

9. REVISED PER COMMENTS

10. REVISED PER COMMENTS

11. REVISED PER COMMENTS

12. REVISED PER COMMENTS

13. REVISED PER COMMENTS

14. REVISED PER COMMENTS

15. REVISED PER COMMENTS

16. REVISED PER COMMENTS

17. REVISED PER COMMENTS

18. REVISED PER COMMENTS

19. REVISED PER COMMENTS

20. REVISED PER COMMENTS

21. REVISED PER COMMENTS

22. REVISED PER COMMENTS

23. REVISED PER COMMENTS

24. REVISED PER COMMENTS

25. REVISED PER COMMENTS

26. REVISED PER COMMENTS

27. REVISED PER COMMENTS

28. REVISED PER COMMENTS

29. REVISED PER COMMENTS

30. REVISED PER COMMENTS

31. REVISED PER COMMENTS

32. REVISED PER COMMENTS

33. REVISED PER COMMENTS

34. REVISED PER COMMENTS

35. REVISED PER COMMENTS

36. REVISED PER COMMENTS

37. REVISED PER COMMENTS

38. REVISED PER COMMENTS

39. REVISED PER COMMENTS

40. REVISED PER COMMENTS

41. REVISED PER COMMENTS

42. REVISED PER COMMENTS

43. REVISED PER COMMENTS

44. REVISED PER COMMENTS

45. REVISED PER COMMENTS

46. REVISED PER COMMENTS

47. REVISED PER COMMENTS

48. REVISED PER COMMENTS

49. REVISED PER COMMENTS

50. REVISED PER COMMENTS

51. REVISED PER COMMENTS

52. REVISED PER COMMENTS

53. REVISED PER COMMENTS

54. REVISED PER COMMENTS

55. REVISED PER COMMENTS

56. REVISED PER COMMENTS

57. REVISED PER COMMENTS

58. REVISED PER COMMENTS

59. REVISED PER COMMENTS

60. REVISED PER COMMENTS

61. REVISED PER COMMENTS

62. REVISED PER COMMENTS

63. REVISED PER COMMENTS

64. REVISED PER COMMENTS

65. REVISED PER COMMENTS

66. REVISED PER COMMENTS

67. REVISED PER COMMENTS

68. REVISED PER COMMENTS

69. REVISED PER COMMENTS

70. REVISED PER COMMENTS

71. REVISED PER COMMENTS

72. REVISED PER COMMENTS

73. REVISED PER COMMENTS

74. REVISED PER COMMENTS

75. REVISED PER COMMENTS

76. REVISED PER COMMENTS

77. REVISED PER COMMENTS

78. REVISED PER COMMENTS

79. REVISED PER COMMENTS

80. REVISED PER COMMENTS

81. REVISED PER COMMENTS

82. REVISED PER COMMENTS

83. REVISED PER COMMENTS

84. REVISED PER COMMENTS

85. REVISED PER COMMENTS

86. REVISED PER COMMENTS

87. REVISED PER COMMENTS

88. REVISED PER COMMENTS

89. REVISED PER COMMENTS

90. REVISED PER COMMENTS

91. REVISED PER COMMENTS

92. REVISED PER COMMENTS

93. REVISED PER COMMENTS

94. REVISED PER COMMENTS

95. REVISED PER COMMENTS

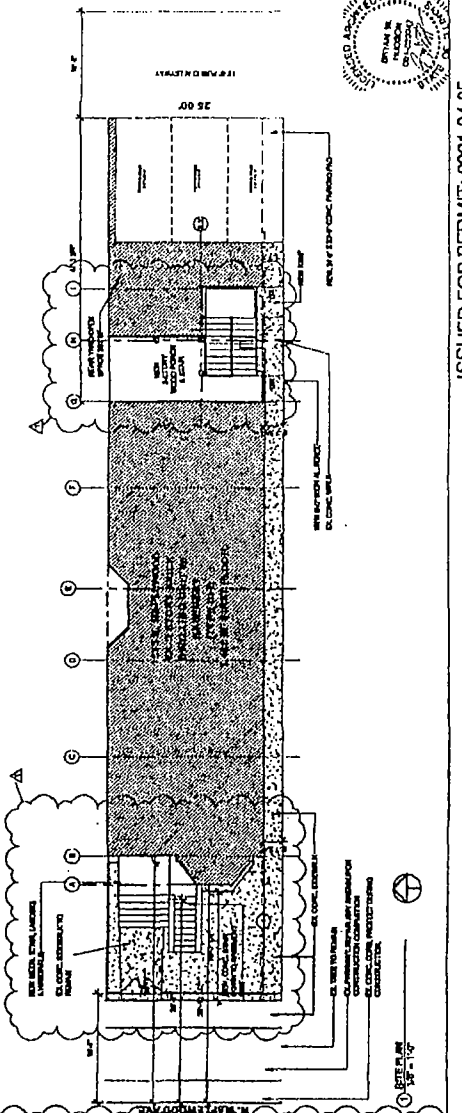
96. REVISED PER COMMENTS

97. REVISED PER COMMENTS

98. REVISED PER COMMENTS

99. REVISED PER COMMENTS

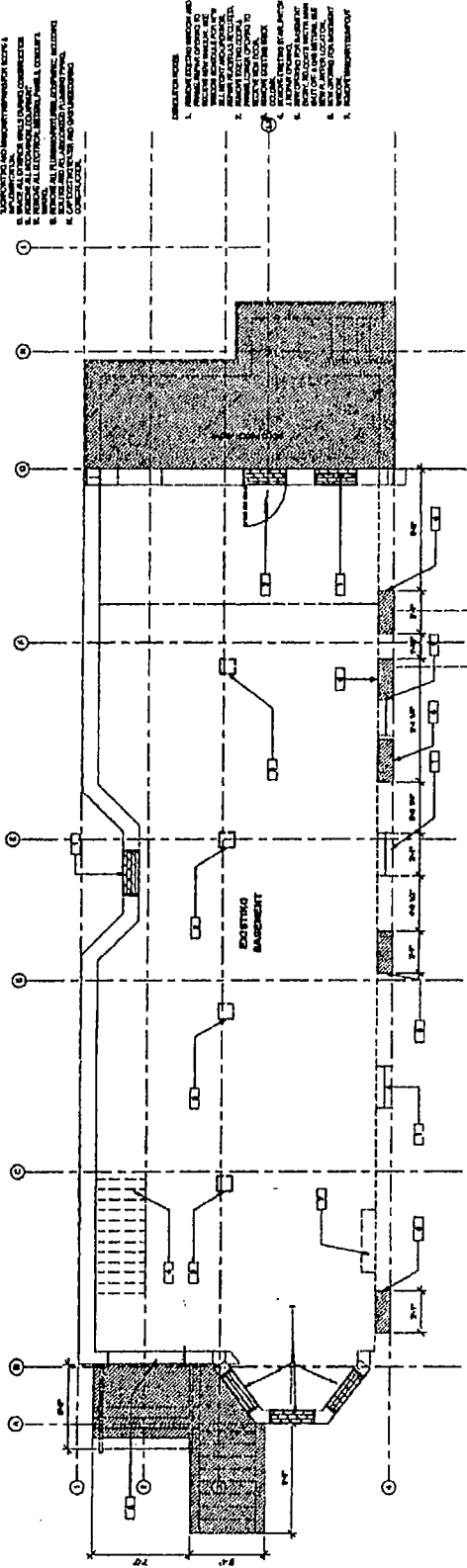
100. REVISED PER COMMENTS



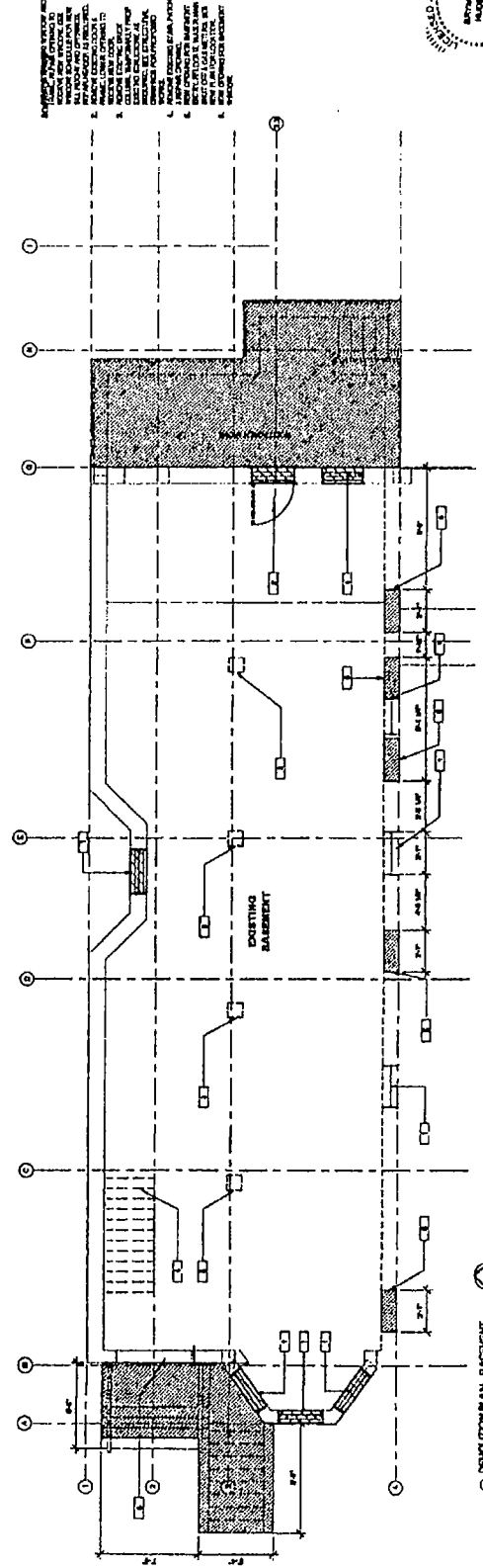
ISSUED FOR PERMIT: 2021.04.05

Final for Publication

NO.	REVISIONS
1	ISSUED FOR PERMIT
2	REVISED PER PLAN ROOM COMMENTS
3	REVISED PER PLAN ROOM COMMENTS
4	REVISED PER PLAN ROOM COMMENTS
5	REVISED PER PLAN ROOM COMMENTS
6	REVISED PER PLAN ROOM COMMENTS
7	REVISED PER PLAN ROOM COMMENTS
8	REVISED PER PLAN ROOM COMMENTS
9	REVISED PER PLAN ROOM COMMENTS
10	REVISED PER PLAN ROOM COMMENTS



2. DEMOLITION PLAN - BASEMENT
1/4" = 1'-0"



1. DEMOLITION PLAN - BASEMENT
1/4" = 1'-0"

- GENERAL NOTES:**
1. ALL WORK SHALL BE IN ACCORDANCE WITH THE CITY OF CHICAGO ORDINANCES AND THE ILLINOIS BUILDING CODE.
 2. ALL WORK SHALL BE IN ACCORDANCE WITH THE CITY OF CHICAGO ORDINANCES AND THE ILLINOIS BUILDING CODE.
 3. ALL WORK SHALL BE IN ACCORDANCE WITH THE CITY OF CHICAGO ORDINANCES AND THE ILLINOIS BUILDING CODE.
 4. ALL WORK SHALL BE IN ACCORDANCE WITH THE CITY OF CHICAGO ORDINANCES AND THE ILLINOIS BUILDING CODE.
 5. ALL WORK SHALL BE IN ACCORDANCE WITH THE CITY OF CHICAGO ORDINANCES AND THE ILLINOIS BUILDING CODE.
 6. ALL WORK SHALL BE IN ACCORDANCE WITH THE CITY OF CHICAGO ORDINANCES AND THE ILLINOIS BUILDING CODE.
 7. ALL WORK SHALL BE IN ACCORDANCE WITH THE CITY OF CHICAGO ORDINANCES AND THE ILLINOIS BUILDING CODE.
 8. ALL WORK SHALL BE IN ACCORDANCE WITH THE CITY OF CHICAGO ORDINANCES AND THE ILLINOIS BUILDING CODE.
 9. ALL WORK SHALL BE IN ACCORDANCE WITH THE CITY OF CHICAGO ORDINANCES AND THE ILLINOIS BUILDING CODE.
 10. ALL WORK SHALL BE IN ACCORDANCE WITH THE CITY OF CHICAGO ORDINANCES AND THE ILLINOIS BUILDING CODE.

- EXPLANATION:**
1. DEMOLITION PLAN - BASEMENT
 2. DEMOLITION PLAN - BASEMENT
 3. DEMOLITION PLAN - BASEMENT
 4. DEMOLITION PLAN - BASEMENT
 5. DEMOLITION PLAN - BASEMENT
 6. DEMOLITION PLAN - BASEMENT
 7. DEMOLITION PLAN - BASEMENT
 8. DEMOLITION PLAN - BASEMENT
 9. DEMOLITION PLAN - BASEMENT
 10. DEMOLITION PLAN - BASEMENT

- NOTES:**
1. ALL WORK SHALL BE IN ACCORDANCE WITH THE CITY OF CHICAGO ORDINANCES AND THE ILLINOIS BUILDING CODE.
 2. ALL WORK SHALL BE IN ACCORDANCE WITH THE CITY OF CHICAGO ORDINANCES AND THE ILLINOIS BUILDING CODE.
 3. ALL WORK SHALL BE IN ACCORDANCE WITH THE CITY OF CHICAGO ORDINANCES AND THE ILLINOIS BUILDING CODE.
 4. ALL WORK SHALL BE IN ACCORDANCE WITH THE CITY OF CHICAGO ORDINANCES AND THE ILLINOIS BUILDING CODE.
 5. ALL WORK SHALL BE IN ACCORDANCE WITH THE CITY OF CHICAGO ORDINANCES AND THE ILLINOIS BUILDING CODE.
 6. ALL WORK SHALL BE IN ACCORDANCE WITH THE CITY OF CHICAGO ORDINANCES AND THE ILLINOIS BUILDING CODE.
 7. ALL WORK SHALL BE IN ACCORDANCE WITH THE CITY OF CHICAGO ORDINANCES AND THE ILLINOIS BUILDING CODE.
 8. ALL WORK SHALL BE IN ACCORDANCE WITH THE CITY OF CHICAGO ORDINANCES AND THE ILLINOIS BUILDING CODE.
 9. ALL WORK SHALL BE IN ACCORDANCE WITH THE CITY OF CHICAGO ORDINANCES AND THE ILLINOIS BUILDING CODE.
 10. ALL WORK SHALL BE IN ACCORDANCE WITH THE CITY OF CHICAGO ORDINANCES AND THE ILLINOIS BUILDING CODE.

MULTIFAMILY RESIDENCE
1535 N. MARLEWOOD AVE, CHICAGO,
ILLINOIS, 60622



DEMOLITION PLANS
BASEMENT & FIRST
FLOOR



ISSUED FOR PERMIT: 2021.04.05

